

Change Your Style Everyday

SUNMER

HAIR CARE



SUNMER®

Shanghai SUNMER Electrical co.,Ltd
#24-26 Gubo Road, Xinchang Industrial Park,
Pudong Shanghai 201314 China
Tel : 0086-21-3801 5292
Fax: 0086-21-3801 5295
E-MAIL: sunmerhair@sunmerhair.com
URL: www.sunmerhair.com



SUNMER®



“COMPANY INTRODUCE”

Established in 2000, Shanghai Sumner Electrical Appliance Co., Ltd. is a manufacturer and exporter specializing in designing and manufacturing of beauty products for professional salon and home use, gather to research to manufacture, produce, sell, the service is an integral whole.

Located in Shanghai China, our products are hair straightener, hair dryer, electric hair trimmer, hair clipper, Hair Curler and hair accessory etc.. Passed approvals of **GS, CE, ETL, CETL, UL, CB, PSE, ROHS**.

We are cooperating with many famous companies, enjoying a long-term business relationship by continuous development of new technology.

Have more experience for export to USA, Canada, Australia, Spain, Italy, Germany, France, UK, Russia and other European countries, also Japan, Korea, Iran, and Israel.

We can provide you first-class products with highest quality and best service.
No matter young or big company, OEM /ODM orders always welcome!

Test Verifications of Certificates

Shanghai Sumner Electrical Appliance Co., Ltd. is a manufacturer and exporter specializing in designing and manufacturing of beauty products for professional salon and home use, gather to research to manufacture, produce, sell, the service is an integral whole.

Located in Shanghai China, our products are hair straightener, hair dryer, electric hair trimmer, hair clipper, Hair Curler and hair accessory etc.. Passed approvals of **GS, CE, ETL, CETL, UL, CB, PSE, ROHS**.

We are cooperating with many famous companies, enjoying a long-term business relationship by continuous development of new technology.

Have more experience for export to USA, Canada, Australia, Spain, Italy, Germany, France, UK, Russia and other European countries, also Japan, Korea, Iran, and Israel.

We can provide you first-class products with highest quality and best service.
No matter young or big company, OEM /ODM orders always welcome!

Test Verifications of Certificates

Shanghai Sumner Electrical Appliance Co., Ltd. is a manufacturer and exporter specializing in designing and manufacturing of beauty products for professional salon and home use, gather to research to manufacture, produce, sell, the service is an integral whole.

Located in Shanghai China, our products are hair straightener, hair dryer, electric hair trimmer, hair clipper, Hair Curler and hair accessory etc.. Passed approvals of **GS, CE, ETL, CETL, UL, CB, PSE, ROHS**.

We are cooperating with many famous companies, enjoying a long-term business relationship by continuous development of new technology.

Have more experience for export to USA, Canada, Australia, Spain, Italy, Germany, France, UK, Russia and other European countries, also Japan, Korea, Iran, and Israel.

We can provide you first-class products with highest quality and best service.
No matter young or big company, OEM /ODM orders always welcome!

Shanghai Sumner Electrical Appliance Co., Ltd. is a manufacturer and exporter specializing in designing and manufacturing of beauty products for professional salon and home use, gather to research to manufacture, produce, sell, the service is an integral whole.

Located in Shanghai China, our products are hair straightener, hair dryer, electric hair trimmer, hair clipper, Hair Curler and hair accessory etc.. Passed approvals of **GS, CE, ETL, CETL, UL, CB, PSE, ROHS**.

We are cooperating with many famous companies, enjoying a long-term business relationship by continuous development of new technology.

Have more experience for export to USA, Canada, Australia, Spain, Italy, Germany, France, UK, Russia and other European countries, also Japan, Korea, Iran, and Israel.

We can provide you first-class products with highest quality and best service.
No matter young or big company, OEM /ODM orders always welcome!

Quality Control

We are much concerned on quality control and make quality control strictly according to the ISO9001:2000 version.

TQM: Total Quality Management

- IQC: Incoming Quality Control - we check 100%, all unqualified raw material, we will not accept.
- IPQC: Input Process Quality Control - we check 100% all of the temperature function and aging each individual iron half hour long.
- FQC: Final Quality Control- when production finished, we will check product performance, housing, silkscreen, coated, package.
- QA: Quality Assurance - quality review and product review.

OEM /ODM Service

We have extensive range of existing models available, we can also put your ideas into reality. Our engineers and design department can develop samples according your you idea and requirement. OEM/ODM orders are always welcomed.

R&D

Our R&D members are trained regularly so that they can get new knowledge continuously. they steadily work to come up with innovative and top-quality products to meet existing market demands, at the same time seek for new markets and work for improvements. we develop 10-15 new products every year.

“Hair Straightener”

A Passion For Hair

IP27

- The Vibration straighteners use a unique vibration feature which will help your hair glide easily through the heating plates meaning less damage;
- LCD Digital show with screen which is easily viewed through the clear window;
- Variable Temperature: 80 -230C / 200-450F Degree, Max to 240C/464F;
- Auto shut off sleep mode turns the style off if it is not used for 35 minutes;
- Korea NANO Ceramic/ Tourmaline/ Teflon&Ceramic / NANO Silver Titanium plate is available;
- Non-tangle rotating power cable;



IP40M

- Fast & safe heaters and a digital MICOM heat control system decrease initial heating time & constant heat;
- Adjustable temperature by LED Digital show: 80-230C/140-450F degree, Max to 240C/470F;
- Korea NANO Ceramic / Tourmaline/ Teflon & Ceramic / Nano Silver Titanium plates available;
- Auto shut off sleep mode after 50 minutes;
- 1" floating heat plate, 25*90mm;
- Non- tangle rotating power cable;



IP40W

- Fast & safe heaters and a digital MICOM heat control system decrease initial heating time & constant heat;
- Adjustable temperature by LED Digital show: 80-230C/140-450F degree, Max to 240C/470F;
- Korea NANO Ceramic / Tourmaline/ Teflon & Ceramic / Nano Silver Titanium plates available;
- Auto shut off sleep mode after 50 minutes;
- 1.5" floating heat plate, 38*90mm;
- Non- tangle rotating power cable;



IP38B

- Ensure your hair separate on plate on average, more easy straightening, Comb tooth make hair curl better
- 1" floating Heat plate, 28*90mm
- Adjustable temperature by LCD Digital show: 80-230C/140-450F degree;
- New MCH Ceramic heater by quick Heat-up time up to 230C degree;
- Korea NANO Ceramic / Tourmaline/ Teflon & Ceramic / Nano Silver
- Titanium plates available;
- Auto shut off sleep mode after 50 minutes;
- Non- tangle rotating power cable, 3 meter length;



SILICONE SPEED STRIP PLATE AVAILABLE

MAX
UP TO 450F
230C

SILICONE
SPEED STRIP

AUTO
SHUT-OFF
50MIN

IP38C

- Ensure your hair separate on plate on average, more easy straightening, Comb tooth make hair curl better
- 1.25" floating Heat plate, 35*85mm
- Adjustable temperature by LCD Digital show: 80-230C/140-450F degree;
- New MCH Ceramic heater by quick Heat-up time up to 230C degree;
- Korea NANO Ceramic / Tourmaline/ Teflon & Ceramic / Nano Silver
- Titanium plates available;
- Auto shut off sleep mode after 50 minutes;
- Non- tangle rotating power cable, 3 meter length;



SILICONE SPEED STRIP PLATE AVAILABLE

MAX
UP TO 450F
230C

SILICONE
SPEED STRIP

AUTO
SHUT-OFF
50MIN

IP38A

- 1.25" floating Heat plate, 35*85mm;
- Adjustable temperature by LCD Digital show: 80-230C/140-450F degree;
- New MCH Ceramic heater by quick Heat-up time up to 230C degree;
- Korea NANO Ceramic / Tourmaline/ Teflon & Ceramic / Nano Silver Titanium plates available;
- Auto shut off sleep mode after 50 minutes;
- Non- tangle rotating power cable;



SILICONE SPEED STRIP PLATE AVAILABLE

MAX
UP TO 450F
230C

SILICONE
SPEED STRIP

AUTO
SHUT-OFF
50MIN

IP22D

- Floating Heat plate: 21*74mm; Power: 40W
- Production dimension: L183*W40*H34
- Input AC 110-250 V, Output DC 8.4 V, 1200mAh
- Adjustable Temperature Control system with built-in micro chip ranged from 150-200 degree via 5 levels
- Rechargeable PANASONIC Lithium battery, Charging time about 2 to 3 hours
- Special ceramic and energy saving heater can save energy over 40% and super long time using after charging
- Strengthened safe control system (for an example, Auto-off after 15 minutes without use);
- Working time about 65 minutes.



IP31A

- AC110-250V/50-60Hz, 35W, Universal Voltage for world-wide use;
- Fast Ceramic heater by quick Heat-up time up to 230C degree in seconds;
- 1" floating Heat plate, 28*90mm;
- Variable Temperature from 80-230C/140-450F Degree;
- Korea NANO Ceramic / Tourmaline/ Teflon & Ceramic / Nano Silver Titanium plates available;
- Auto shut off sleep mode after 50 minutes;
- Non- tangle rotating power cable;



IP26A

- AC110-250V/50-60Hz, 35W, Universal Voltage for world-wide use;
- Fast Ceramic heater by quick Heat-up time up to 230C degree in seconds;
- 1" floating Heat plate, 24*90mm;
- Variable Temperature from 80-230C/140-450F Degree;
- Korea NANO Ceramic / Tourmaline/ Teflon & Ceramic / Nano Silver Titanium plates available;
- Auto shut off sleep mode after 50 minutes;
- Non- tangle rotating power cable;



IP31B

- Fast Ceramic heater by quick Heat-up time up to 230C degree in seconds;
- 1" floating Heat plate, 28*90mm;
- On-Off switch on the side for easy access
- Korea NANO Ceramic / Tourmaline/ Teflon & Ceramic / Nano Silver Titanium plates available;
- Non- tangle rotating power cable;



IP26B

- Fast Ceramic heater by quick Heat-up time up to 230C degree in seconds;
- 1" floating Heat plate, 24*90mm;
- On-Off switch on the side for easy access
- Korea NANO Ceramic / Tourmaline/ Teflon & Ceramic / Nano Silver Titanium plates available;
- Non- tangle rotating power cable;



IP25A

- Fast Ceramic heater by quick Heat-up time up to 230C degree in seconds;
- 1" floating Heat plate, 24*90mm;
- Variable Temperature from 80-230C/140-450F Degree;
- Korea NANO Ceramic / Tourmaline/ Teflon & Ceramic / Nano Silver Titanium plates available;
- Non- tangle rotating power cable;



IP18

- 1" floating Heat plate, 28*90mm;
- On-Off switch on the side for easy access
- Korea NANO Ceramic / Tourmaline/ Teflon & Ceramic / Nano Silver Titanium plates available;
- Non- tangle rotating power cable;



IP25B

- Fast Ceramic heater by quick Heat-up time up to 230C degree in seconds;
- 1" floating Heat plate, 24*90mm;
- On-Off switch on the side for easy access
- Korea NANO Ceramic / Tourmaline/ Teflon & Ceramic / Nano Silver Titanium plates available;
- Non- tangle rotating power cable;



IP35A

Wet to Dry Hair Flat Iron

- AC110-250V/50-60Hz, 35W, Universal Voltage for world-wide use;
- New MCH Ceramic heater by quick Heat-up time up to 230C degree;
- 1.25" floating Heat plate, 35*90mm;
- Variable Temperature from 80-230C/140-450F Degree;
- Korea NANO Ceramic / Tourmaline/ Teflon & Ceramic / Nano Silver Titanium plates available;
- Auto shut off sleep mode after 50 minutes;
- Non- tangle rotating power cable;



“Hair Curler,” A Passion For Hair

IPC18

- AC110-250V/50-60Hz, 35W, Universal Voltage for world-wide use;
- Variable Temperature: 80 -230/140-450F Degree;
- Fast Ceramic heater by quick Heat-up time up to 230C degree in seconds;
- Auto shut off sleep mode after 50 minutes;
- Barrel sizes : 30*100mm;
- Comfortable ergonomic handle, Light, slim and balanced design;
- Non-tangle rotating power cable;



IPC21

- AC110-250V/50-60Hz, 35W, Universal Voltage for world-wide use;
- Variable Temperature: 80 -230/140-450F Degree;
- Fast Ceramic heater by quick Heat-up time up to 230C degree in seconds;
- Auto shut off sleep mode after 50 minutes;
- Barrel sizes : 2 pcs = 18*100mm, 1 pcs = 23*100mm;
- Comfortable ergonomic handle, Light, slim and balanced design;
- Non-tangle rotating power cable;



“HAIR DRYER,” A PASSION FOR HAIR



SM-1600

- Professional hair Dryer;
- Strong wind of 1500 Watt;
- DC Motor with Longer Life, very light of 350g;
- 3 Safety device, Double filter.
- Radiation of anion and infrared ray.
- Easy operation switch.
- Diffuser and concentrator included.



SM-3500

- Professional hair Dryer;
- Strong wind of 1500 Watt;
- DC Motor with Longer Life, very light of 350g;
- 3 Safety device, Double filter.
- Radiation of anion and infrared ray.
- Easy operation switch.
- Diffuser and concentrator included.



“Hair Clipper”

A Passion For Hair

JY-306

- Professional Rechargeable hair Clipper/Trimmer.
- Far-Infrared function can improve hair blood circulation and relieve immune nerves.
- VERY strong DC Motor with Longer Life.
- Ceramic moving blade, high density titanium alloy steel stationary blade.
- 4 Trimmer guide: 3.6, 9, 12mm.
- High capacity NI-MH Battery 2000Ahm, can continue to use 2 hours, rechargeable time 2-3 hours.



JY-308

- Professional Rechargeable hair Clipper/Trimmer.
- VERY strong DC Motor with Longer Life.
- Ceramic moving blade, high density titanium alloy steel stationary blade.
- 4 Trimmer guide: 3.6, 9, 12mm.
- High capacity NI-MH Battery 1200Ahm, can continue to use 2 hours, rechargeable time 2-3 hours.



JY-305

- Professional Rechargeable hair Clipper/Trimmer.
- VERY strong DC Motor with Longer Life.
- Ceramic moving blade, high density titanium alloy steel stationary blade.
- 4 Trimmer guide: 3.6, 9, 12mm.
- High capacity NI-MH Battery 1200Ahm, can continue to use 2 hours, rechargeable time 2-3 hours.



JY-299

- Professional Rechargeable hair Clipper/Trimmer.
- VERY strong DC Motor with Longer Life.
- Ceramic moving blade, high density titanium alloy steel stationary blade.
- 4 Trimmer guide: 3,6,9,12mm.
- High capacity Ni-MH Battery 1200Ahm, can continue to use 2 hours.
- rechargeable time 2-3 hours.



JY-298

- Professional Rechargeable hair Clipper/Trimmer.
- VERY strong DC Motor with Longer Life.
- Ceramic moving blade, high density titanium alloy steel stationary blade.
- 4 Trimmer guide: 3,6,9,12mm.
- High capacity Ni-MH Battery 1200Ahm, can continue to use 2 hours.
- rechargeable time 2-3 hours.



JY-288

- Rechargeable hair Clipper/Trimmer.
- VERY strong DC Motor with Longer Life.
- Ceramic moving blade, high density titanium alloy steel stationary blade.
- 4 Trimmer guide: 3,6,9,12mm.
- High capacity Ni-MH Battery 800Ahm, can continue to use 2 hours.
- rechargeable time 2-3 hours.



JY-278A

- Professional Rechargeable hair Clipper/Trimmer.
- VERY strong DC Motor with Longer Life.
- Ceramic moving blade, high density titanium alloy steel stationary blade.
- 4 Trimmer guide: 3,6,9,12mm.
- High capacity Ni-MH Battery 1200Ahm, can continue to use 2 hours.
- rechargeable time 2-3 hours.



JY-278

- Professional Rechargeable hair Clipper/Trimmer.
- VERY strong DC Motor with Longer Life.
- Ceramic moving blade, high density titanium alloy steel stationary blade.
- 4 Trimmer guide: 3,6,9,12mm.
- High capacity Ni-MH Battery 1200Ahr, can continue to use 2 hours.
- rechargeable time 2-3 hours.



JY-268

- Professional Rechargeable hair Clipper/Trimmer.
- VERY strong DC Motor with Longer Life.
- Ceramic moving blade, high density titanium alloy steel stationary blade.
- 4 Trimmer guide: 3,6,9,12mm.
- High capacity Ni-MH Battery 1200Ahr, can continue to use 2 hours.
- rechargeable time 2-3 hours.



JY-228

- Professional Rechargeable hair Clipper/Trimmer.
- VERY strong DC Motor with Longer Life.
- Ceramic moving blade, high density titanium alloy steel stationary blade.
- 4 Trimmer guide: 3,6,9,12mm.
- High capacity Ni-MH Battery 1200Ahr, can continue to use 2 hours.
- rechargeable time 2-3 hours.



JY-218

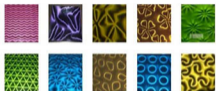
- Professional Rechargeable hair Clipper/Trimmer.
- VERY strong DC Motor with Longer Life.
- Ceramic moving blade, high density titanium alloy steel stationary blade.
- 4 Trimmer guide: 3,6,9,12mm.
- High capacity Ni-MH Battery 1200Ahr, can continue to use 2 hours.
- rechargeable time 2-3 hours.



Water Transfers



3D PAINTING COLORS



Accessory

