

Korean Parts O.E.M Associated  
Construction Machinery Parts Specialist  
Genuine Parts/OEM/Rebuilt Parts

## The right parts at the right prices with satisfactory service



- Excavator Parts
- Crawler Drill Parts
- Hydraulic Hammer Parts
- General Attachments for Excavators



# Crawler Drill Parts

**Drifter Parts / Front Head / Piston / Driver / Shanker /  
Rotation Bushing Unit / Shank Adaptor / Coupling...,**

ATLAS COPCO, DAINONG, FURUKAWA, INGERSOLL-RAND, JOY,  
SOOSAN, TAMROCK, TOYO, & OTHERS

## FURUKAWA

**PCR200, HCR300, HCR500, HCR9-S, HCR12-S, HCR15-S, JTH SERIES  
(DRIFTER-PD200, HD300, HD500, HD609, HD612, HD615)**

PCR200-PD200 / PCR200A-PD200/PCR200E PD200/HCR-C300S HD300S /HCR-300 HD300/HCR-C500 HD500/CR-500S HD500S /HCR-9 SERIES  
HD609-1/ HCR-9 SERIES HD609-2 (QED) /HCR-12 SERIES HD612-1/HD612-2/HCR-12 SERIES HD612-2/HD612-3(QED) /HCR15-EDS HD612-2  
/HCR15-EDS HD615-3(QED)/HCR10-DS HD709/HCR-900 HD709 /HCR-1200 HD712 /HCR-1500 HD715 /JTH SERIES HD75 /JTH SERIES HD150/  
JTH SERIES HD190 /JTH-, T2RW/T3RW HD210

## ATLAS COPCO

**ROC400 SERIES, ROC742HC SERIES, ROCD7 SERIES, JUMBO DRILL, ETC,  
(COP1238 SERIES, COP1838 SERIES, BBE57, OP131)**

ROC-400 SERIES BBE57-01 /ROC-400 SERIES COP131 /BOOMER Series COP1032/1038 /ROC-812HCS COP1238/1838 /ROC-742HCS  
COP1238/1838 /ROC-748HCS COP1238/1838 /BOOMER 132/282/352/353 COP1238 SERIES/ROC-D5 COP1838 SERIES /ROC-D7-11 COP1838  
SERIES /BOOMER L2D/353/352 COP1838 SERIES /ROC-F9 COP1838 SERIES ,COP2550CR

## INGERSOLL-RAND

**LM100, CM341, CM345, CM350, CM351, LM401, LM470, LM500, CM580, ETC,  
(VL140, YH60, YH65, YH70, YH80, YH100)**

LM-100 YD90 /ECM-345/350/351 VL140 /CDH-701 YH45/CDH-712 YH50/CDH-812 YH55/CDH-901C YH65A /LM-401C YH60A /LME-500C YH65A /LMA-  
500C YH100(RPS) /LMEAC-500 YH80 /ECM590 YH80A/YH80 /LM-470 YH70S /CM-470 YH70S /CM/ECM-580 YH80/100RPS

## TAM ROCK SANDVIK

**DHA/CHA500, DHA/CHA550, DHA/CHA600, DHA/CHA660, ETC (HL500, HL550, HL600)**

COMMANDO100/300 HL300 /CHA500 HL500 /RAGER500 HL500/510/550/560 /RANGER K5 HL510 /CHA600/660 HL600/600TM//RAGER700  
HL700/CHA1100C HL1000 /DHA1000 HL600 /MINIMATIC HS205D HL538, HL438

## TOYO

**THCD915(TOYO650), THCD918(TOYO656), ETC, (TH501, TH800)**

THCD-550 TH500 /THCD-650C TH501 /THCD-656C TH800 /TCD-915C TH501 /TCD-918CH TH800 /TCD-1218 TH850 /TCD-1229  
TH850R /TCD-928C TH800R

## SOOSAN

**SD650, SD700, SD1000, SD1100, SD1200, ETC, (SP3, SP6)**

SHCD650 SP3 /SD700 SERIES SP3/SP3-2 /SD1000/SD1300 SP3-2/SP-6

## JOY

JOY VCR260/360/361/460

## TAISEI

DCH600S/DCH400 T3-2

## DAENONG

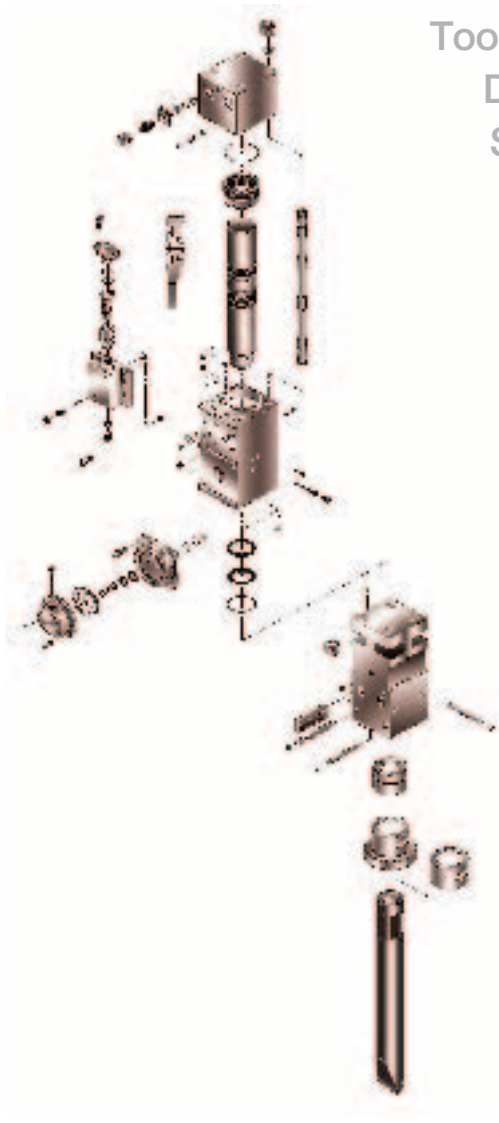
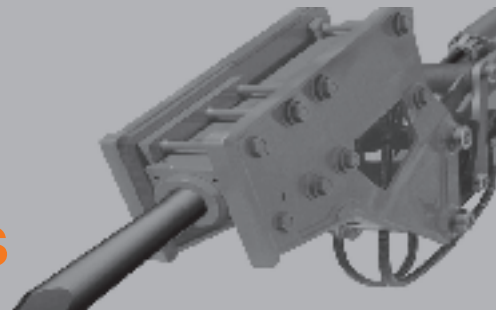
DAINONG DNCD2000/3000 T3-2



Front Head, Piston, Driver, Shanker, Rotation Bushing Assy, Shank Adaptor, Coupling...,



# Hydraulic Hammer Parts



Tool / Piston, Cylinder, Seal-kit, Tie-Rod, Front Head, Diaphragm, Tool pin, Front Head, Cushion rubber, Stop valve ,Piping kit, Stop pin, 3-way Valve & etc

## Exhaustive Quality control & Testing

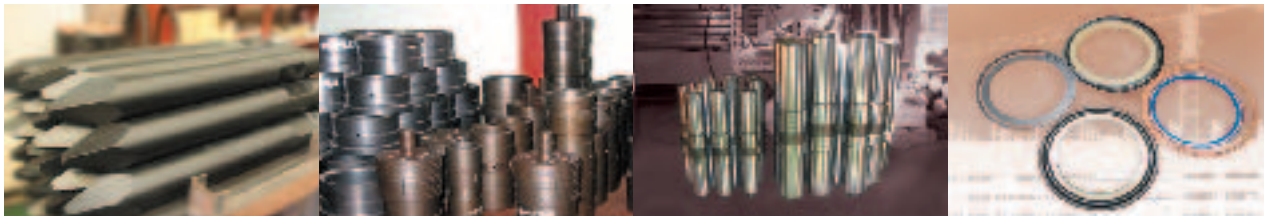
From the material selection to final assembly is controlled to ensure the best performance.

## Extended Durability

Alloy steels and special heat treatment strengthen main component durability.

## Spare Parts of Hydraulic Breakers

of Krupp, Rammer, Montabert, Indeco, Furukawa, NPK, Okada, Toyo, Euroram, Toku, Stanley, Atlas Copco, any Korean & etc



Tool, Piston, Cylinder, Back Head, Front Head, Seal Kit, Diaphragm / Membrane, Through Bolt, Thrust Ring, Thrust Bush, Front Cover / Tool Bush & others.



***By Good Manufacturing Practices, we always do our best to keep the Quality equal to Genuine Parts.***

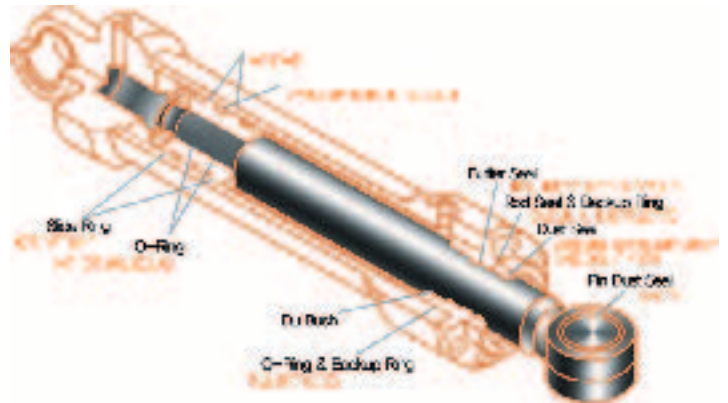
# Excavator Parts

Under Carriage parts, Pump parts, Seal kits(Boom, Arm, Bucket and Pump).

Komatsu - Kobelco - Hitachi - Hyundai - Volvo - Daewoo - Sumitomo - Kato

## Hydraulic Seals

ROD SEAL/PISTON SEAL/DUSTSEAL/WEAR RING/  
O-RING/BACKUP RING/  
SEAL KITS(Boom, Arm, Bucket and Pump)



## Pump & Motor Parts

### KAWASAKI

KVC 925L KVC/925D KVC 932 KVC930 K3V 63DT K3V 112DT K3V 140DT K3V 180DT K3V180DTH NV 64DT NV45DT,OLD NV 80DT NV 84DT NV 111DT NV 90DT NV 137DT NV 120 NV 172DT NV210/270 NVK 45DT M2X63 MX150/173 M2X120/128 M2X 170 M2X150 M2X 210 HTM 450 MX 450 MX 500 MX 530 MX 750C

### UCHIDA

A7V160L-HD PUMP ; A8107SP1R MOTOR ; A7V107L-HD A3V107SPIR A7V0250 A8V 55 A8V59 A6V107 A8V 80 A8V86 A10V17SR  
A8V 107 A8V0107L A8V115 A8V160L A8V 172 A10V23 A10V28

### Others

SG08 MFB 150,160 /SG15/SG17 SG20 SPK 10/10 SPV 10/10 PVD 21 PVD 22 PPS140 PVD23 PVD24 HPV091 HPV 116 HPV 145 HPV125B HPV125A LVP370 MAG150/170 HPV 50/60 HPV 70/80 PC200-1 HPV110/120 HPV160 HPV160 HPR100 HPR160 B2PV75 B2PV105 14G & 12G GM30F, 30B, 24VA, 23VA GM30H GM35VA

KAWASAKI/ HITACHI/ LINDE (EBARA), CATERPILLAR / MITSUBISHI/ REXROTH (HYDROMATIC) / UCHIDA/ KOMATSU/ DAIKIN/ LIEBHERR/ KAYABA/ SHIBAURA/ SUNDUSTRAND(SAUER) SWSAH PLATE TYPE PUMP/ GEAR PUMP/DEIJIN SEIKI/ Bent Axis Type Motor SUNDUSTRAND



## Under Carriage parts

### KOMATSU

PC60L-1PC100-1/2PC100-5PC120-1PC120-5PC200-1PC200-3PC200-5/6PC220-5PC300-1PC300-3PC300-5PC400-1PC400 5PC6501PC650-3

### HITACHI

EX100EX100MEX110 EX120EX120-1EX120-2EX200-1EX200LCEX200-2 EX200-3EX200LC-2 EX200LC-3EX220EX220-2EX220LCEX220LC-2EX300-1 EX300-2 EX300-3EX300LC-1 EX300LC-2 EX300LC-3EX400-1EX400LCEX400-2 EX400-3EX400LC-2 EX400LC-3EX400-5

### VOLVO(SAMSUNG)

SE22MX3MX55MX6LCMX132MX132LCMX135MX8-2MX8-LCMX222MX222LCMX225MX225SE130LCM-3MX10-2MX10-2LCMX292MX292LCMX295MX352MX352LCMX365MX452MX452LCMX455

### HYUNDAI

R450R500R130LC R1300LCR130LC-3 R1300LC-3R200LC R2000R180LC-3 R200LC-3 R210LC-3R2800 R290LC R320LC R4200R4500 R450-LC

### JI CASE

450450A/B/C750 800 8501150B1450 1455B

### JOHN DEERE

JD420/440JD450/550JD 650G 556G

### KATO

450SE-V700V-II1250V-II1880SE-II1880SE-III

### KOBELCO

K907-2K907 B/CSK200K909SK220SK300

### SUMITOMO LS2800 LS2800A

mitsubishi MS110 E110E120BMS180-8 E180E200B EL200BE300B

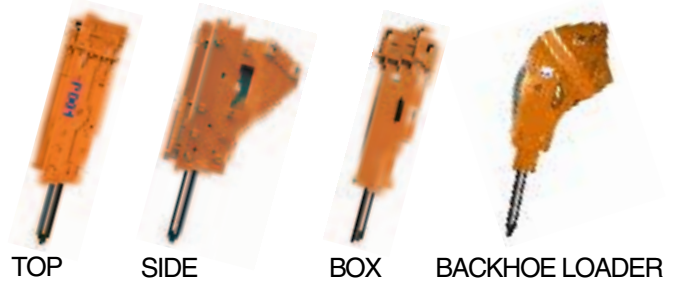


# Hydraulic Hammers

A unit for every machine



## Standard Bracket Type



Small & Medium Hydraulic Hammers  
 Highest Productivity!  
 Lowest Maintenance!  
 Durability & Serviceability!



## GENERAL SPECIFICATION

DESCRIPTION		Light class			Medium class	
Unit		PB01	PB02	PB03	PB08	PB10
Impact energy	JOULES	550	800	990	4,800	7,500
Blow per min	B.P.M	550~1,200	450~1,000	50~950	320~700	300~650
Oil flow rate	LIT/MIN(G.P.M)	28~50(7~13)	34~60(7~13)	40~80(10~21)	120~150(32~40)	160~230(42~61)
Operating weight	KG (lbs)	157(346)	268(590)	355(782)	1,620(3,570)	2,200(4,850)
Tool diameter	mm (in)	60(2.36)	70(2.75)	75(2.95)	135(5.31)	150(5.9)
Weight of carrier	TON (lbs)	1.5~4.0 (2,200~6,600)	2.5~7.5 (5,500~16,500)	5.0~9.0 (16,000~19,800)	21.0~32.0 (46,000~70,000)	26.0~38.0 (57,000~84,000)
Operating oil pressure	Bar (psi)	90~120 (1,280~1,700)	95~130 (1,350~1,900)	100~140 (1,450~2,030)	150~180 (2,320~2,610)	160~180 (2,320~2,610)
Hose/Tubing size	mm(in)	13(1/2)	13(1/2)	13(1/2)	25(1)	32(1 1/4)

# General Attachments for Excavators

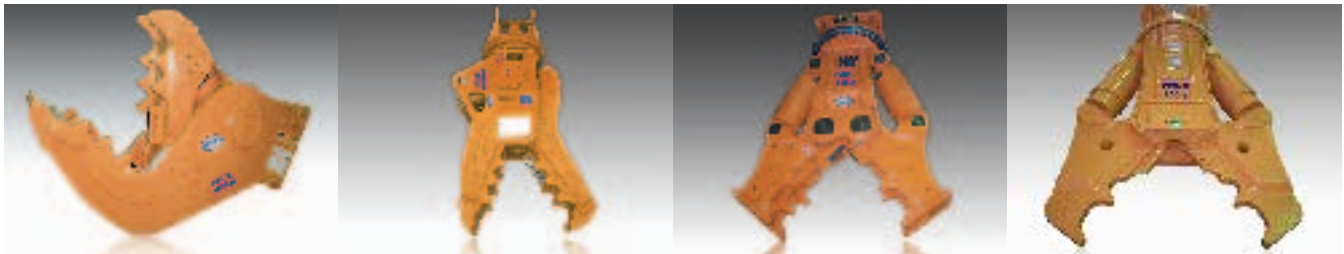
## Crushers

Wear Resistant Steel provides long life and durability.

A high performance cylinder reduces the time needed to open and close jaws, increasing productivity.

### Mechanical Crushers

designed for both Primary and Secondary demolition work



One cylinder (Fixed)type

**PWP200I** 18~26tones  
**PWP300I** 26~32tones

One cylinder(Motor Rotating)type  
\*Interchangeable jaws set

**PWMP200I** 18~26tones  
**PWMP300I** 26~32tones

Two cylinder(Motor Rotating)type  
\*Interchangeable jaws set

**PWMC200II** 18~26tones  
**PWMC300II** 26~32tones  
**PWMP200II** 18~26tones  
**PWMP300II** 26~32tones

### CRUSHERS

Description		PWP200I	PWP300I	PWMP200I	PWMP300I	PWMC200II	PWMC300II	PWMP200II	PWMP300II
Operating Weight	Kg	1,800	2,334	2,000	2,600	1,680	2,630	1,760	2,800
	lb	3,968	5,146	4,409	5,732	3,704	5,798	3,880	6,173
Operating Pressure	Kg/mm2	300	320	300	320	300	320	300	320
	psi	4,226	4,550	4,226	4,550	4,226	4,550	4,226	4,550
Opening Width	mm	850	920	886	957	886	1163	872	968
	inch	33.46	36.22	34.88	37.68	34.88	34.88	34.33	38.11
Crushing Force	Ton	A:108	A:123	53-145	73-201	57-85	93-135	51-95	91-171
		B:150	B:171						
		C:178	C:199						
		D:220	D:239						
Cutting Force	Ton	270	286	165	229	183	317	183	317
Cutter Length	mm	200	300	200	300	180	200	180	200
	inch	7.89	11.81	7.89	11.81	7.09	7.87	7.09	7.87
Overall Length	mm	1,836	1,981	2,386	2,627	2,128	2,624	2,197	2,631
	inch	72.28	77.99	93.94	103.43	83.78	103.31	86.5	103.58
Suitable Excavator	Ton	18~26	26~32	18~26	26~32	18~26	18~26	18~26	18~26
Oil Flow Rate	LPM	200~250	250~300	200~250	250~300	200~250	250~300	200~250	250~300
	GPM	52.8~66.1	52.8~66.1	52.8~66.1	66.1~79.2	52.8~66.1	66.1~79.2	52.8~66.1	66.1~79.2
Motor Pressure	Kg/mm2	w/o	w/o	160	160	160	160	160	160
	psi			2,275	2,275	2,275	2,275	2,275	2,275
Motor Oil Flow Rate	Kg/mm2	w/o	w/o	36-40	36-40	36-40	36-40	36-40	36-40
	psi			9.5-10.5	9.5-10.5	9.5-10.5	9.5-10.5	9.5-10.5	9.5-10.5
Revolving Speed	RPM	w/o	w/o	13-15	13-15	13-15	13-15	13-15	13-15

## Shears & Grapples

### Shears

provides a powerful, efficient means to cut steel and rebar, crush concrete as well as pick up and sort materials “a full 360° hydraulic rotation”



One cylinder(Motor Rotating)type

**PWMS200I** 18~26tones  
**PWMS300I** 26~32tones



**PWMS400I** 32~45tones  
**PWMD300I** 26~32tones



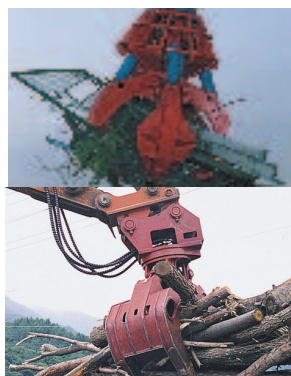
Two cylinder(Motor Rotating)type  
 \*Interchangeable jaws set  
**PWMS200II** 18~26tones  
**PWMS300II** 26~32tones

### Shears

Description		PWMS200I	PWMS300I	PWMD300I	PWMS200II	PWMS300II
Operating Weight	Kg/lb	2,000/4,409	2,450/5,401	2,450/5,401	1,760/3,880	2,800/6,173
Operating Pressure	Kg/mm2/psi	300/4,226	320/4,550	320/4,550	300/4,226	320/4,550
Opening Width	mm/inch	507/19.96	571/22.48	731/28.78	522/20.55	603/24.1
Cutting Force	Ton	172	256	210	73-200	129-385
Cutter Length	mm/inch	500/19.69	600/23.62	500/19.69	120X4/4.72X4	120X5/4.72X4
Overall Length	mm/inch	2,181/85.87	2,174/85.59	2,529/99.57	2,258/88.89	2,640/103.94
Suitable Excavator	Ton	18~26	26~32	26~32	18~26	18~26
Oil Flow Rate	LPM/GPM	200~250/52.8~66.1	250~300/66.1~79.2	25~300/66.1~79.2	200~250/52.8~66.1	250~300/66.1~79.2
Motor Pressure	Kg/mm2/psi	160/2,275	160/2,275	160/2,275	160/2,275	160/2,275
Motor Oil Flow Rate	Kg/mm2/psi	36-40/9.5-10.5	36-40/9.5-10.5	36-40/9.5-10.5	36-40/9.5-10.5	36-40/9.5-10.5
Revolving Speed	RPM	13-15	13-15	13-15	13-15	16-18

### Grapples

Loading and unloading timbers, logs and pipes.



#### Orange

Model	POG-400	POG-500	POG-700	POG-900
Weight(kg)	680	865	1,120	1,610
Excavator(ton)	12 ~ 18	18 ~ 25	25 ~ 32	32 ~ 45

#### Wood

Model	PWG-60	PWG-800	PWG-1000
Weight(kg)	820	980	1,200
Excavator(ton)	12 ~ 18	18 ~ 25	25 ~ 32

## *Partswell Warranty Support*



### **Head Office**

LA-4104 Joongang utongdanji Kurodong 1258 Kurogu Seoul Korea

Tel: 82 707 019 8828 Fax: 82 2 6341 1240

Email: [sales@partswell.com](mailto:sales@partswell.com) Website: [www.partswell.com](http://www.partswell.com)

### **Factory/Warehouse**

1055 Komodong Siheung Kyoungkido Korea.