



**SKE CO., LTD**

**COMPANY PROFILE**

# Overview

---

SKE co., Ltd. is specialized in developing and manufacturing mold and precision parts used for automobile, sl ot machine, household appliance, semiconductor, medical appliance, industrial robot and so on. Since established in 1998, our products have been consistently distributing to many Japanese companies as well as domestic companies and we have maintained the philosophy to continuously providing customers with competitive and perfect products, exceeding their needs on the basis of our professional technology, experience and services.

**Company Name:** SKE co., Ltd.

**President:** Moonkyu, Han

**Establishment:** Oct, 22, 1998

**Capital:** USD20,000

**Address:** 6FL, Haesong B/D, 1066-1, Doksan-Dong, Kumcheon-Gu, Seoul, Korea, 153-832

**Tell:** 82-2-847-0184

**Fax:** 82-2-847-0187

**E-mail:** ske@skeng.co.kr

**Web site:** www.skeng.co.kr



## Business area

---

### Engineering, Trading, Distributing & OEM

#### Mold

Plastic, Blow, Die-casting, Pressing, Vacuum forming, Injection mold, Forging mold

#### Precision parts

Semiconductor, Medical appliance, Industrial robot

#### Goods display

Indoor LED Display set (Channel+ LED setting+ Power supply), Gondola, Display stand, Price stand, Baskets

#### House ware

Slipper, Basket, Trash basket, Clothes horse, Iron board, Tidy

#### Kitchenware

Pan, Fry pan, Cutting board, Food container, Kitchen tools, Tray

## Trade performance

---

- **Japan HITACHI** PLASTIC-INJECTION mold for Laundry machine
- **Japan SANYO** PLASTIC-INJECTION/PRESS-STAMPING DIE mold for Laundry machine
- **Japan SHARP** PLASTIC-INJECTION mold for Laundry machine
- **Japan TOSHIBA** PLASTIC-INJECTION/PRESS-DRAWING DIE for Refrigerator& Electric rice cooker
- **Japan PANASONIC** PLASTIC-INJECTION mold for Electronic & electrical products
- **Japan HITACHI** EXTRUSION-ALUMINIUM mold for Copy machine
- **Japan SAMMII** PLASTIC-INJECTION mold for GAME MC
- **Japan TERASAKI** PLASTIC-INJECTION BRAKER
- **Japan KAWAJUN** PLASTIC-INJECTION/BLOW DISPLAY  
DIE CASTING-AL/Zn  
PRESS-STAMPING/DRAWING/PROGRESSIVE/NCT
- **Japan PALOMA** ALUMINIUM-COATING COOKWARE
- **Japan TOPCON** CERAMIC PARTS for ROBOT ARM
- **Japan SAKURAI** CERAMIC PARTS for ROBOT ARM
- **Japan IWAKI** IRON CASTING mold for Chemical pump
- **Japan TOYOTA** PLASTIC-INJECTION mold for Auto mobile
- **Japan HONDA** PLASTIC-INJECTION mold for Auto mobile
- **Japan NISSAN** PLASTIC-INJECTION mold for Auto mobile
- **Korea GM** PRESS-STAMPING/DRAWING/PROGRESSIVE/TRANSFER for Auto mobile
- **Korea SEKONIX** PLASTIC-INJECTION mold for Auto mobile
- **Korea 3S** PLASTIC-INJECTION for WAFER
- **Korea LOTTE department store** FOOD MARKET DISPLAY
- **Korea SHINSEGE department store** FOOD MARKET DISPLAY
- **Korea HYUNDAI department store** FOOD MARKET DISPLAY
- **USA QVC** CUTTING BOARD

# Partners

---

<b>PLASTIC PARTS</b>	-PLASTIC INJECTION MOLD	(12 COMPANIES)
	-PLASTIC INJECTION	(6 COMPANIES)
	-PLASTIC EXTRUSION&DIE	(3 COMPANIES)
	-PLASTIC EXTRUSION&DIE	(3 COMPANIES)
	-PLASTIC BLOW&MOLD	(2 COMPANIES)
	-PLASTIC VACCUM FORMMING&DIE	(1 COMPANIES)
	-PLASTIC MACHINING	(2 COMPANIES)
<b>METAL PRESSING PARTS</b>	- PRESS WORKING DIE	(6 COMPANIES)
	- PRESS WORKING	(4 COMPANIES)
<b>DIE-CASTING PARTS</b>	- ALUMINIUM	(3 COMPANIES)
	- Zn	(2 COMPANIES)
<b>MACHINING PARTS</b>	- METAL	(5 COMPANIES)
	- PLASTIC	(2 COMPANIES)
	- CERAMIC	(2 COMPANIES)
	- OTHERS	(7 COMPANIES)
<b>HOUSEWARE GOODS</b>	- PLASTIC	(6 COMPANIES)
	- METAL& COATING	(4 COMPANIES)
	- OTHERS	(9 COMPANIES)

# Mold Business

---

## Mold

Plastic (Home appliance, Auto mobile, Electronics) ,  
Blow, Die-casting, Pressing (Home appliance, Auto  
mobile, Electronics), Vacuum forming, Injection  
mold, Forging mold

## Precision parts

– Product:

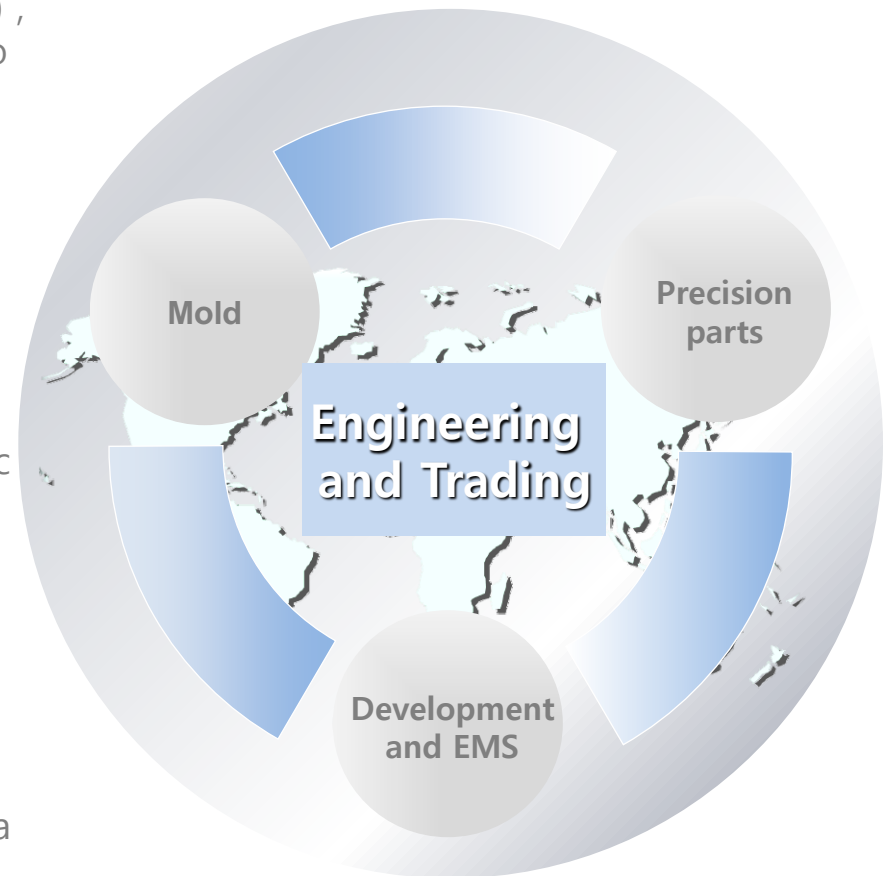
Semiconductor equipment, Medical equipment,  
Electron microscope, Industrial robot, Surveying  
instrument, Aircraft parts, Precision mold  
components, Industrial machinery parts, Electronic  
forming, MIM (Metallic Injection Molding)

– Material:

Ceramics, Aluminum, Copper, Special steel,  
Titanium, SUS, Steel, Plastic

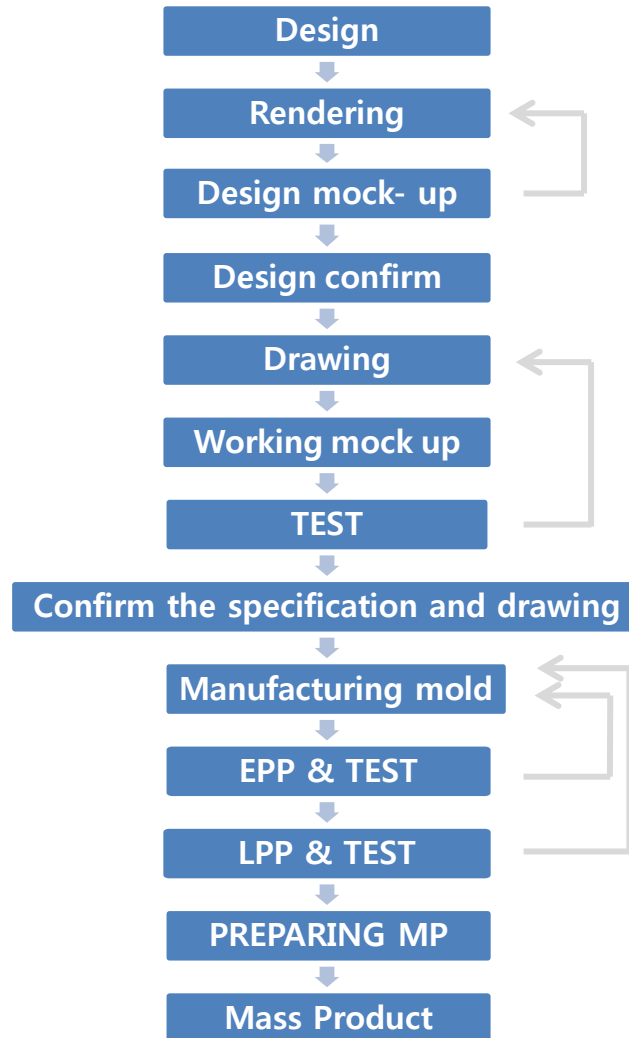
## Development and EMS

We have been developed various mechanical,  
electronics, IT products, daily necessities and idea  
goods as customer's needs from design, drawing,  
trial product, mold manufacturing to mass  
production.



# R & D process

---



# Product

---

## Plastic mold

- Plastic (Home appliance, Auto mobile, Electronics)
- Pressing (Home appliance, Auto mobile, Electronics)
- Die-casting
- Vacuum forming
- Forging mold (Dies, Punch, Pin)
- Semiconductors (Lead frame, Packaging)
- Blow
- Extrusion molding
- Injection mold,

## Auto mobile

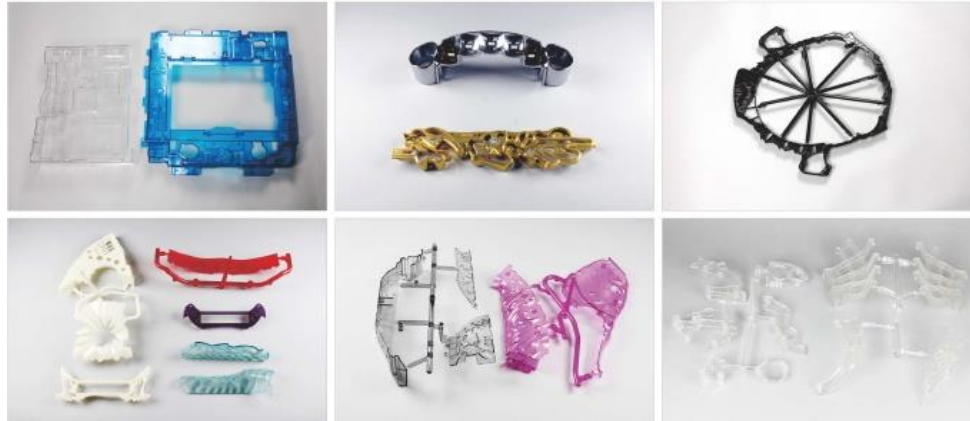




# Product

---

## Slot machine parts



## Electronics



# Product

---

## Precision parts



## Other Products



# Product

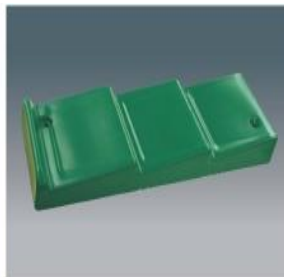
## Press



## Die-casting



## Blow mold



## Extrusion



## Vacuum forming



## Forging mold



# Product

---

## Precision Parts

### Products

- Semiconductor equipment
- Electron microscope
- Surveying instrument
- Precision mold components
- Medical equipment
- Industrial robot
- Aircraft parts
- Industrial machinery parts

### Materials

- Ceramics
- Copper
- Titanium
- Steel
- Electronic forming
- MIM (Metallic Injection Molding)
- Aluminum
- Special steel
- SUS
- Plastic



# Product

---

## Development and EMS

We have been developed various mechanical, electronics, IT products, idea goods, daily necessities as customer's needs from design, drawing, trial product, mold manufacturing to mass production





**Thank you**