

Instruction

Wellbule water pitchers are designed for filtering tap water for drinking. It is designed n the basis of the most advanced water treatment technology and contains highly efficient materials and components.

The filter cartridge contains a combination of high quality activated carbon and ion exchangers to reduce aesthetic chlorine form the water. It also reduces unpleasant odor and improves taste.

Each pitcher is equipped with a device that is designed to keep you informed about the filter life status and to let you know when it is necessary to replace the filter cartridge for optimum performance. Not replacing the filter cartridge after its useful life has expired will affect its performance.

Please follow the instructions and enjoy high quality, healthier great tasting water. Please keep this manual for future reference.

Specification

Cartridge capacity: 80 gallons(about 300liters)

Initial flow speed: no less than 3liters/h

Temperature of the water under filtration: no higher than 45°C , no less than 1°C

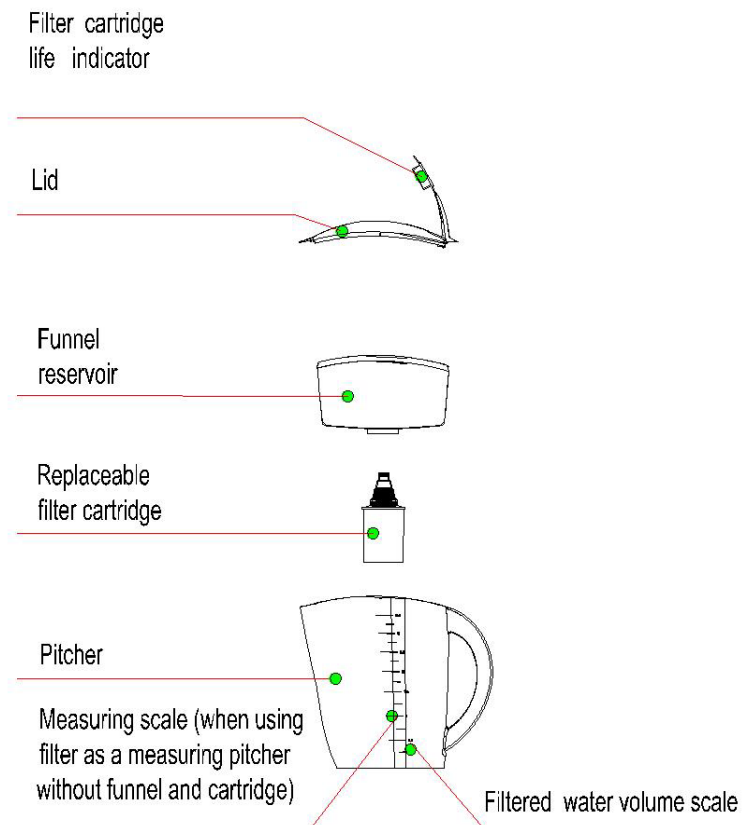
The maximum shelf life of the cartridge is 2years

The water pitcher unit service life is 5 years

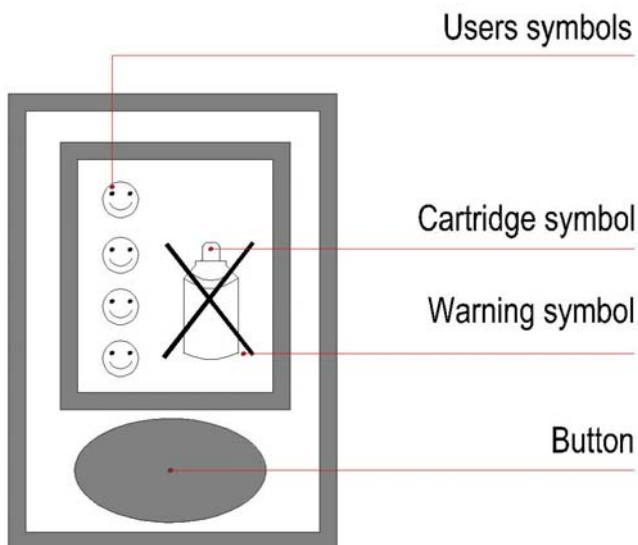
Catridge should be replaced after 3 months of use regardless of the amount and of treated water

Pleast note: Filter cartridge volume capacity may vary based on water quality.

The filter pitcher consists of the following parts:



Electronic cartridge life indicator



Getting started before the first time use

1.1 Cleaning instructions for new water filter pitcher before first use and every cartridge exchange

Clean the funnel and jug in the dishwasher or by hand

The lid must not be washed in the dishwasher. Clean the lid by hand.

1.2 Screw the cartridge firmly into the funnel reservoir.

1.3 Place the funnel reservoir into the top portion of the pitcher

1.4 Fill the funnel reservoir with cold water up to the brim and wait until the water in the funnel reservoir is filtered into the pitcher.

1.5 Repeat step 1.4 twice and discard the filtered water as this will rinse away any loose activated carbon particles and will prepare the filter cartridge for use.

How to program the electronic cartridge life indicator

2.1 Press the button and hold it down for a few seconds until the symbols appear on the screen. Once you release the button, the blinking symbol for users appears on the screen.

2.2 Now you can set the number of users by pressing the button until the desired number of users appears in the display.

2.3 Once you set the number of users, press the button and hold it down for several seconds until the symbol of the cartridge appears in the display. The indicator is now activated.

Note: The indicator switches off if the button is not pressed within 30 seconds before the timer is programmed. If this occurs, please repeat the steps 2.1-2.3.

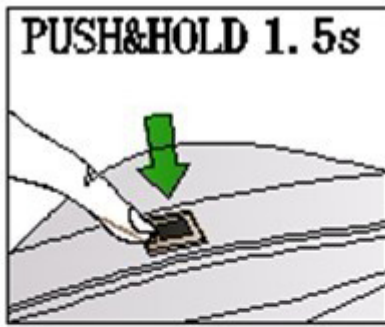


Fig 1

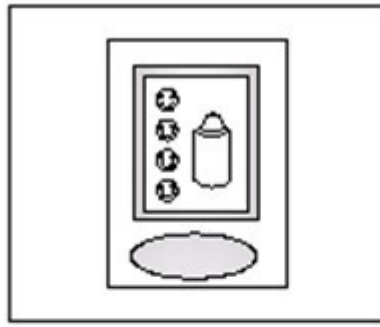


Fig 2

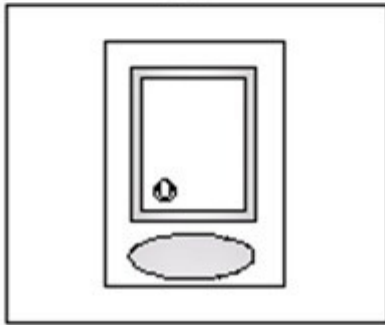


Fig 3

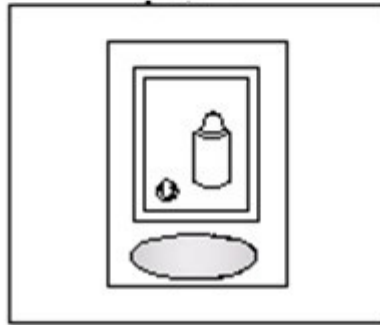


Fig 4

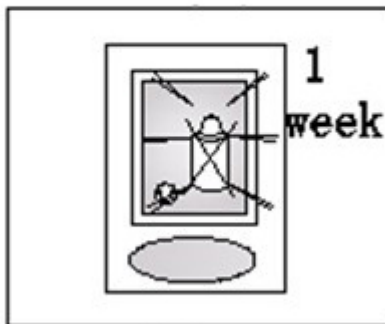


Fig 5

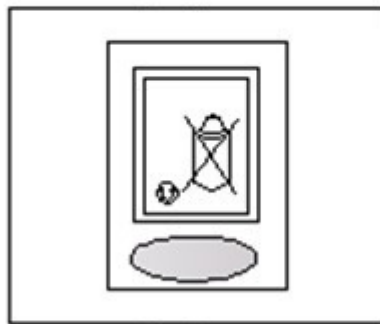


Fig 6

Knowing when to replace the filter cartridge

When the blinking warning symbol("X") appears on the cartridge image in the display, it means that the filter cartridge should be replaced within one week. As the week passes all symbols on the screen start blinking reminding you that filter cartridge life has expired. Replace the filter cartridge at this time.

Replace the cartridge

- 3.1 Unscrew the cartridge from the funnel reservoir
- 3.2 Rinse the filter parts carefully
- 3.3 Screw the new cartridge into the funnel reservoir and repeat steps 1.2 to 1.5.
- 3.4 Reactivate the indicator by pressing the button and holding it down for a few seconds.(The number of users remains unchanged)

Note: You can easily change the number of users by entering the users' setting mode: quickly double press the buttons, then repeat the steps 2.2 and 2.3. When the users' number is changed the cartridge life time is re-calculated automatically.

Attention:

- 4.1 Only use the filter for its intended purpose.
- 4.2 Keep the replacement cartridge in the original sealed wrapper while not in use and store in a dry cool place.
- 4.3 When filling the funnel reservoir, do not place the filter cartridge opening directly under the running water.
- 4.4 Wash your filter pitcher and funnel reservoir regularly with soapy water, rinse and then dry with a soft cloth.
- 4.5 When using regularly, do not leave the filter pitcher empty(keep filter pitcher filled with water)
- 4.6 Keep the filter away from direct sunlight or excessive heat sources for extended periods of time
- 4.7 When filter is not to be used for a long period of time(more than 3 days) it should be left empty and dry during this period. Before using it again, please follow the instructions in "Before the first time use) section.

Warning

Do not use with water that is microbiologically unsafe or of unknown quality without adequate disinfection before or after the system.

The filter cartridge is for tap water and is not designed to remove bacteria or viruses.

Do not use outdoors if the air temperature is lower than 32°F

Do not fill the funnel reservoir with water until the filtered water in the pitcher is used

Do not wash the filter cartridge

Do not clean using any cleansers with abrasive particles

Do not wash any of the filter cartridge or pitcher components in the dishwasher.

Do not try to change the electronic cartridge life indicator batteries

Do not use this product for anything else other than what it is intended