



Innovative Solutions - Proven Results

• Servicing Mining, Mineral, Process Industries and Port Facilities •

PHONE: +61 7 4968 2000
1800 TEAM ENG
FAX: +61 7 4952 3111
Email: info@teameng.com.au
Web: www.teameng.com.au

Delivery Address:
7-9 Southgate Drive
PAGET MACKAY QLD 4740
Mailing Address:
P O Box 5638
MACKAY MAIL Centre QLD 4741

ESTABLISHED IN 1989



TABLE OF CONTENTS

OUR STATEMENTS.....	3
INTRODUCTION	4
CAPABILITIES.....	5
PROJECT MANAGEMENT.....	6
SITE SERVICES.....	13
Specialized Machine Recovery	14
Mining Services.....	15
3D MODELLING AND DRAFTING SERVICES.....	18
WORKSHOP & OFFICE FACILITIES	19
WORKSHOP & OFFICE FACILITIES	20
PROJECT SUMMARY.....	23
PERSONNEL.....	29
AWARDS.....	30
COMMUNITY SERVICE & INVOLVEMENT	30



OUR STATEMENTS

Our Vision

TEAM Engineering Services Pty Ltd will be a substantial and profitable, heavy engineering and project management business operating nationally and internationally with a reputation for quality and safety. We will be seen by our customers as being able to handle the difficult jobs and as the contractor of choice to deliver results.

Our Mission

We provide heavy engineering construction and maintenance services and project management expertise to Tier 1 customers in the Mining, Minerals Processing, Port Facilities and Bulk Materials Handling Industries by safely delivering flexible, end to end solutions to the requirements of the specification



Our Values

Safety: "Safety is everyone's responsibility"

Innovation: "Our growth and success depends on our ability to remain creative and continuously improved"

Integrity: "Our reputation is the most valuable asset that we possess"

Accountability: "When we commit, we deliver"

Teamwork: "We all contribute to the best of our ability to the success of the team"

Customer Services: "We always treat customers the way that we would want to be treated"

...innovative solutions



INTRODUCTION

TEAM Engineering Services Pty Ltd (TEAM) provides a safe, flexible, end to end solution that meets specification requirement of customers in Mining, Mineral, Port Facilities and Bulk Material Handling industries, who seek great performance through our extensive qualifications and immense experience in Heavy Engineering, Drafting, Fabrication, Project management and Field Services Sectors and supply of bulk material handling equipment.

At TEAM, we work closely with our clients, from the project concept stage through to commissioning, and draw on world's best practice to ensure the optimum solution is achieved.

We offer our clients professional project management from initial planning and organization through to the execution of the complete project. We specialize in providing fully engineered and evaluated solutions for unusual maintenance situations. When required, we utilize professional external expertise to ensure the best possible outcome is achieved. Our solutions are accompanied by Project Safety Management plans and resourced schedules highlighting critical path activities and milestones. On commencement of the execution phase, detailed Inspection and Test plans are completed and Safe Work Procedures are established.

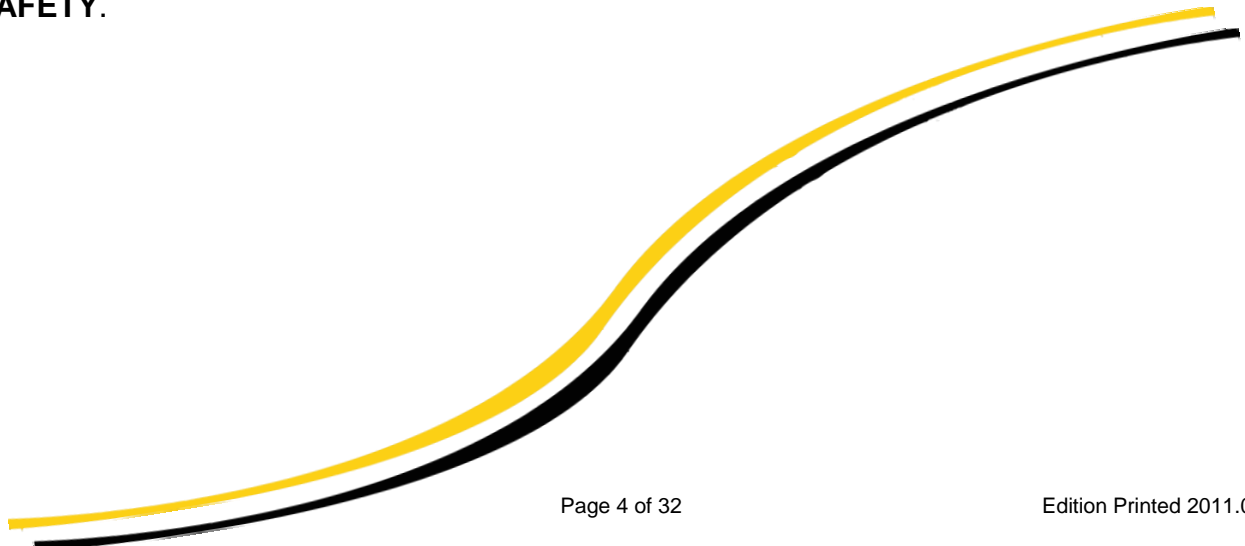
Planned shutdown maintenance and emergency breakdown services are our base workload. Jobs have been executed as far away as Bell Bay in Tasmania. We can also provide site management of the client's preferred sub contractors.

TEAM has a modern and efficient workshop at Paget, Mackay. Our workshop operates 24 hours per day and is serviced with a 25 Tonne overhead crane and state of the art welding equipment. Highly motivated, skilled and professional trades' personnel staff our workshop and our work quality and efficiency reflects the excellent working conditions. TEAM produces Quality Assured work, manufactured to specific design fabrication drawings.

TEAM has a well-equipped engineering and drafting department, offering clients mechanical design and drafting, product simulation and 3D animations. We utilize the most up to date software and hardware, ensuring the most creative service delivery of drawings and other drafting products. TEAM utilizes a document management system to control and monitor all facets of a design project.

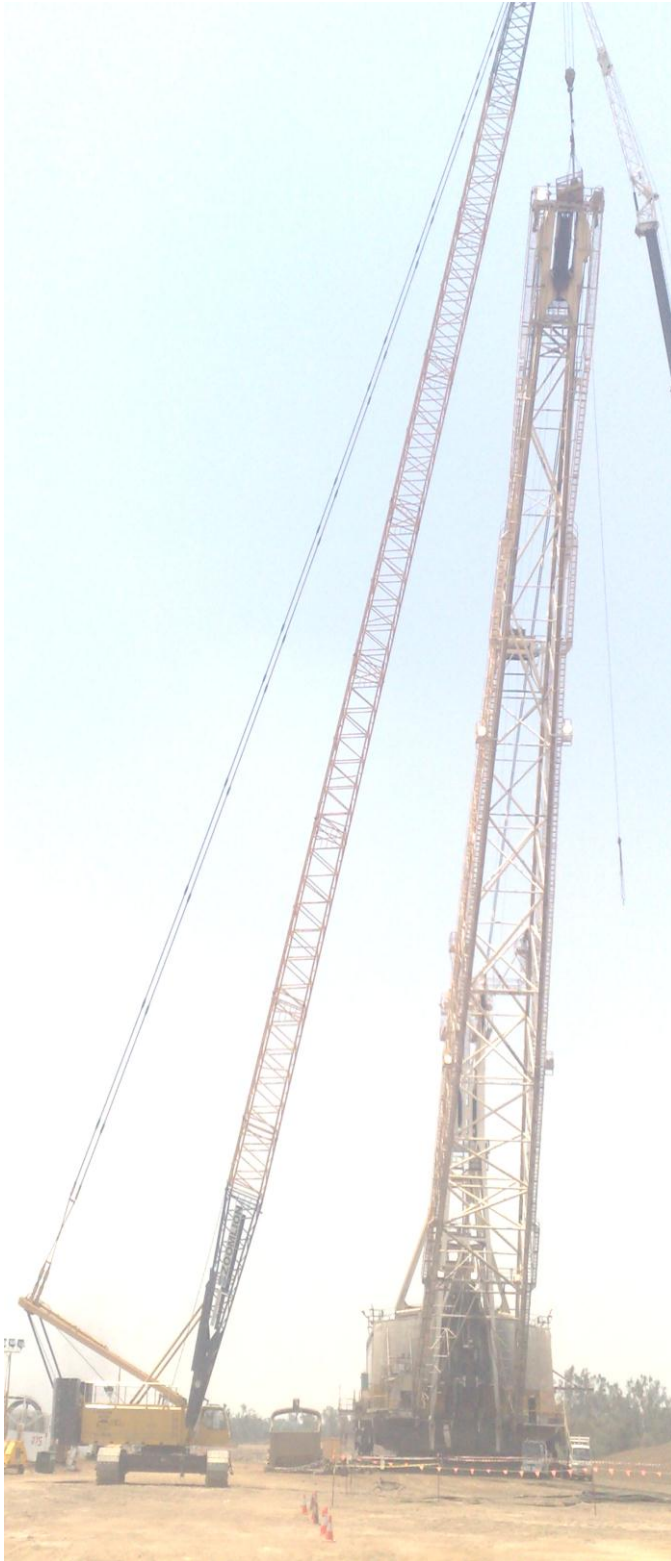
TEAM's personnel includes professional engineers, certified draftspersons, experienced supervisory staff and qualified site crews with disciplines in all trades to provide the client with the expertise to service all your engineering needs and to completely project manage any field operation.

TEAM endeavours to establish a close working relationship with clients in order to provide our cost effective solutions to problems, in a timely manner and above all paying particular attention to **SAFETY**.





CAPABILITIES



PROJECT MANAGEMENT & ENGINEERING SERVICES

- Specialised engineering support services
- Specification and Scope of Work Preparation
- CPM networks and Gantt charts
- Heavy Lift Specification and execution
- Specification and Quality Verification
- Capacity Upgrades and De-bottlenecking
- Relocation of major plant
- Certification lifting equipment
- Material Handling Design Solutions
- Access Design Solutions to AS1657
- Finite Element Analysis Capabilities

3D MODELLING & DRAFTING SERVICES

- 3D Modelling of Mechanical and Structural Components using Solidworks
- Product Simulation
- 3D Animations and Renderings
- Detailing and Drafting 2D Drawings in AutoCad compatible format available
- Dxf. Generation for CAM Machinery

SITE SERVICES

- Machinery Recovery Specialists
- Shutdown, supervision, labour and equipment hire
- Multi-discipline industrial construction and maintenance
- CHPP and Conveyor maintenance specialists
- Specialising in emergency breakdown repairs on Draglines and Shovels
- TEAM-owned cranes
 - 4T Telescopic Handler (3 off)
 - 50T Hydraulic Truck Crane
 - 200T Crawler Crane
 - 20T AWD Hydraulic Franna Pick & Carry

WORKSHOP FACILITIES

- Heavy Engineering Workshop comprising 1,000 sq m under 25 Tonne capacity electric overhead travelling crane
- Pressure Welding, Aluminium Welding, AS 1554 Parts 1-6, Welding and Stainless Steel Welding
- Repairs, Modifications & Equipment Component Upgrades
- Plate Pressing
- Automated and Semi Automated Welding

...Proven Results



PROJECT MANAGEMENT



Heavy Lift Specification and Execution
190T Three Crane Lift to transfer a Dragline Boom



Weighing and Center of Gravity Testing
Execution of in situ weighing of 1200T rail mounted ship loader
four bogies simultaneously at Dalrymple Bay



Specification & Scope of Work Preparation
Design and Installation of 20 litre/sec high pressure water
booster pump and 600m pipeline



Hydraulic Power Pack and Weighing Equipment
Readout

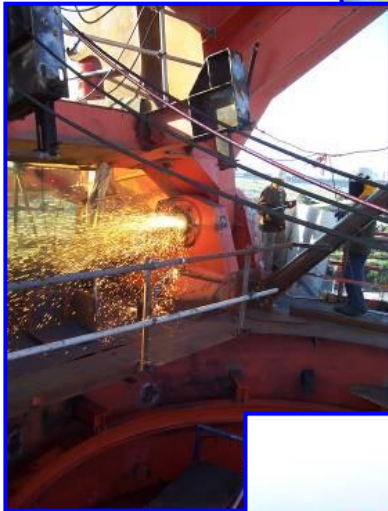
TEAM specializes in Projects working closely with the Client from the project conceptual design stage through to commissioning. TEAM draws on world's best practice expertise to ensure the optimum solution is achieved.



100T hydraulic jack and Load Cell under bogie



Hay Point Lighting Towers
Fabrication of Supports, Access and erection of 35m high Lighting Towers at Hay Point Services.



Port Waratah Coal Services
 Reclaimer 1 Return to Service Upgrade
 Bucketwheel, Shaft and Drive Unit
 Replacement, Slew Bearing Changeout, Rocker
 Arm Repairs and Luff Cylinder Changeout



Hay Point Shiploader SL1

The damaged SL1 Boom was removed and a new Boom Foot was manufactured and fitted.





Crinum East Mine
Excavation, forming and pouring foundation concrete and erection and mechanical installation of Trunk West Conveyor and Transfer Stations





DBCT 7X Project:

TEAM has been involved in multiple contracts with Dalrymple Bay Coal Terminal as part of the 7X Project Upgrades

Contracts:

- Upgrades to Shiploader SL2
- Upgrades to Stacker / Reclaimer SR5
- SR4 Relocation and Upgrade to RL2





- Capacity upgrades and De-bottlenecking
- Relocation of major plant



DRE23 Universal Dig Dump

Project Management of the Design, Procurement, Installation and Commissioning and Performance Testing at Peak Downs Mine

EQUIPMENT ENHANCEMENTS

Team Engineering Services is proud to have Project Managed a major Research and Development project for BMA – Peak Downs: --the Universal Dig Dump Project. This project coordinated the designers, suppliers and contractors Australia wide and resulted in achieving a 29% improvement in the dig capacity of a 20-year-old BE1370 dragline. The Return on Investment of this retrofit is approximately one (1) year. As a result TEAM managed the UDD rollout to a fleet of 6 draglines.



Cannington Shiploader

Design Review and Construction including coordinating the loading onto the Happy Buccaneer



DRE23 UDD Boom Point

The old boom point was removed and replaced with a new 30 tonne boom point with the UDD configuration



UDD Hoist Drum

The existing single Hoist Drum was replaced with the new UDD split drum configuration

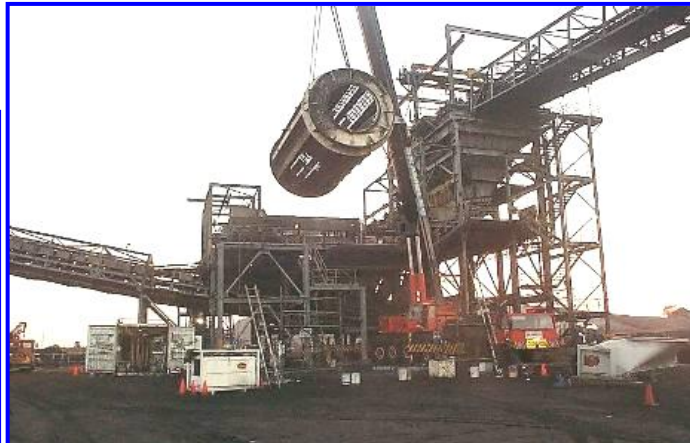


SITE SERVICES



Site Maintenance Services

Including detailed CPM networks and Gantt charts to ensure timely shutdowns – SR4 Bucket wheel Shaft and Gearbox Changeout



Site Maintenance Services

Rotary Breaker removal and re-tyre in progress at Rio Tinto Blair Athol Coal



BHP Minerals Temco Bell Bay

In-Situ Machining Slew Bearing upper and lower path prior to re-installation of the bearing

- Shutdown, supervision, labour and equipment hire
- Multi-discipline industrial construction and maintenance
- Machinery Recovery Specialists



BHP Minerals Temco Bell Bay

Ship Unloader balanced ready for Slew Bearing replacement



BHP Minerals Temco Bell Bay

Slew Bearing removal in progress



SPECIALIZED MACHINE RECOVERY



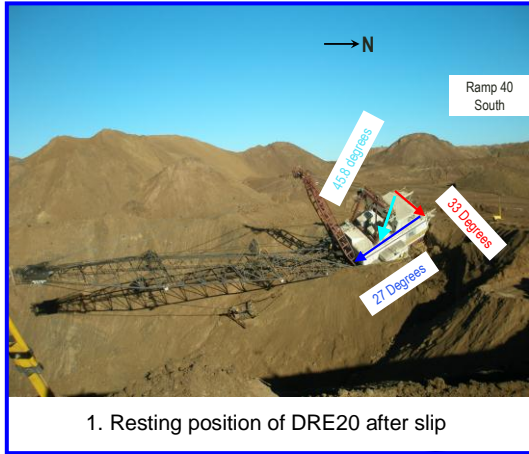
Recovery of DRE11 at Saraji

DRE11 slipped from a bridge during wet weather. Team Engineering Services project managed the recovery, including excavation, boom removal, levelling temporary boom counterweight, re-commissioning and walking to the high wall. DRE11 was levelled in approximately six hours with the assistance of another dragline. DRE11 was then walked forward with temporary boom and counterweight for five kilometres to the high wall maintenance shutdown pad.





MINING SERVICES



1. Resting position of DRE20 after slip



2. Material removal to expose tub



3. Fitting counter weight frame to rear of DRE20



7. DRE20 return to full operation safely without further damage to the machine

Recovery of DRE20 at Norwich Park Mine in 84days from incident to operation



6. Winching approx 50% complete



5. Remote dozer to final trim before leveling



4. 3 off 250t winches used to pull down DRE20



Marion 8050 Dragline Tub Erection



DRE12 Boom Point Sheave Upgrade



DRE21 LHS Propel Rebuild



Marion 8200 Dragline Tub Relocation Wesfarmers Curragh to BMA Blackwater

Various Dragline Projects and Field Maintenance



Line Boring of Lower Swing Bearing Cassette



Propel Bull Gear Rebuild



CRANE SERVICES

rear working area	
h	
30.4	36.2
16000	
16000	12400
15500	12400
14800	12400
14000	12400
13300	11800
12200	10900
11200	10000
10300	9200
9700	8500
7150	7500
5400	5750
4150	4500
3200	3500
2400	2750
1800	2100
1300	1600
500	1000

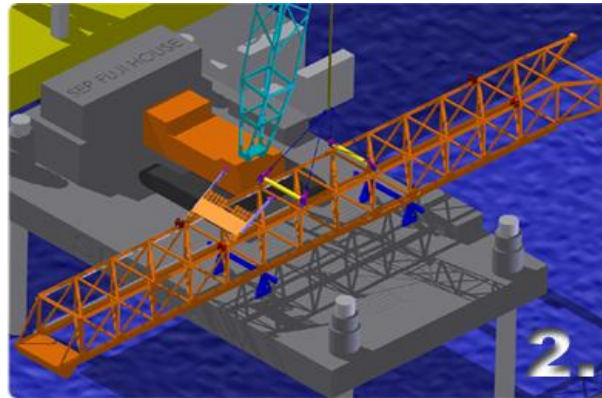
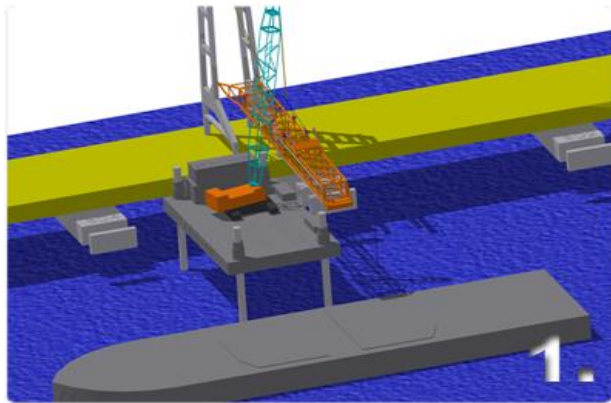
Rated Lifting Capacity

the outrigger beam is full

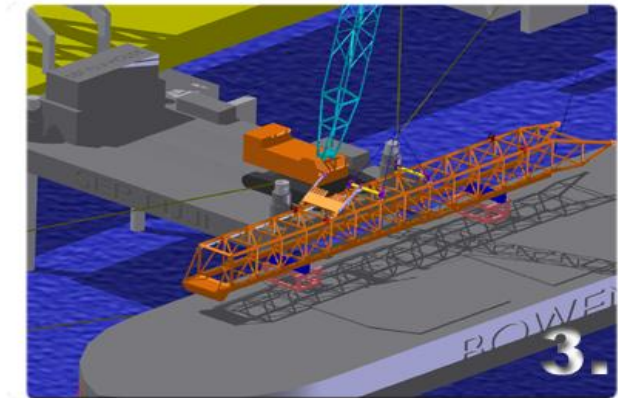
working radius (m)	Rated Lifting Capacity (kg)	Rated Lifting Capacity (t)
3.0	55000	400
3.5	50500	400
4.0	44500	400
4.5	40000	360
5.0	36000	330
5.5	32000	300
6.0	29000	275
6.5	26000	255
7.0	24000	235
7.5	22300	219
8.0	20300	197
9.0	15800	153
10.0		122
11.0		95
12.0		82
14.0		
16.0		
18.0		
20.0		
22.0		
24.0		
26.0		

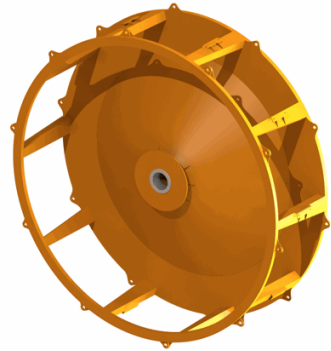


3D MODELLING AND DRAFTING SERVICES

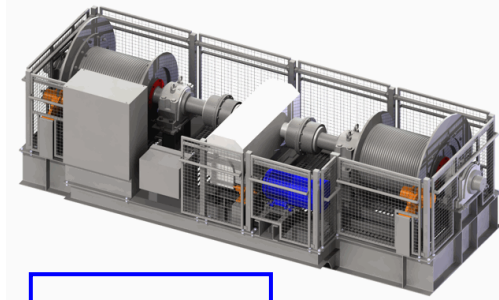


3D Animations of Lift Studies:
- Using 3D SolidWorks





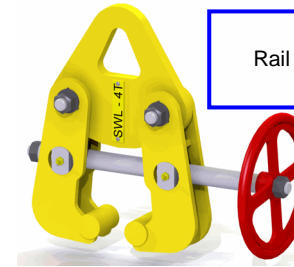
Bucket Wheel



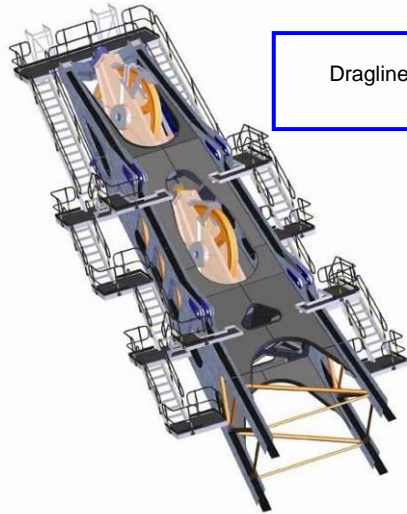
Shuttle Winch



Jacking Stand

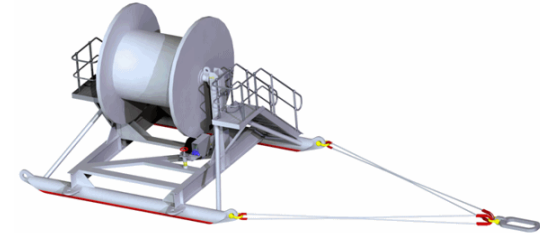


Rail Clamp

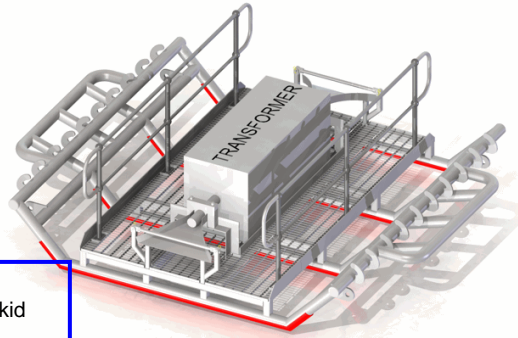


Dragline Boom Tip

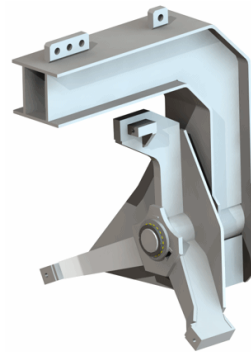
Our Certified SolidWorks Professionals can develop more accurate and reliable product designs through 3D capabilities of SolidWorks and issue 2D drawings and dxf. files for Computer Aided Manufacturing (CAM). Designs can simulate real-world conditions and test multiple "what if" scenarios.



Dragline Rope Reel



Cable Skid



Lifting Frame



Sheave Assembly



WORKSHOP & OFFICE FACILITIES



Office Facility -480M² - Workshop Facility -1000M²



Workshop complete with 25T overhead crane & 10 off 600A welding outlets



Stainless Steel Conical Liner



Bucket Wheel



EX 5500 Bucket Refurbishment



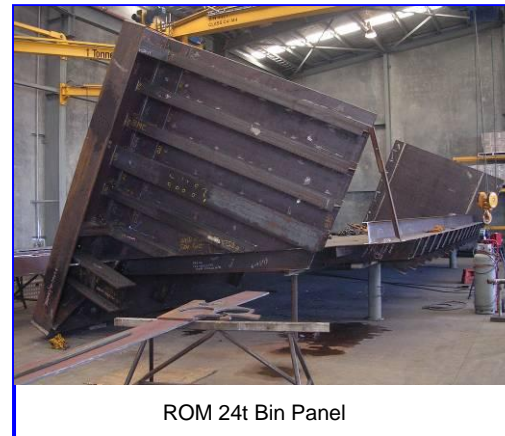
550t Excavator Undercarriage



Shiploader Boom Pivot Assembly



Square to Round Transition Chute



ROM 24t Bin Panel



Reclaimer Blades



WORKSHOP FABRICATION (CONT)



Hoist Rope Skids



Offset Dog Box



Conveyor Belt Support Stand



Hot Box Skid



Floatable Man Lift Boxes



Boom Swivel Sheave with Mudguards



Cable Bridge



Excavator Boom Refurbishment



PROJECT SUMMARY

MAJOR PROJECTS UNDERTAKEN

(Key: P = Projects; W = Workshop; F = Field/Site Services; D = Drafting/3D Modelling)

Date	Key	Client	Project/Equipment	Description	Approx Value \$M
2011	F	Abbot Point	Outloading String OL1 Upgrade	<ul style="list-style-type: none"> Includes supply and installation of concrete, structural steelwork, mechanical equipment and electrical works associated with the upgrade of the existing Outloading String 1 of seven (7) conveyors (OL1). 	10.2
2011	F	Rio Tinto – Kestrel Mine Extension	Portal Doors – Airlocks & Drift Extension	<ul style="list-style-type: none"> Includes drafting, fabrication & civil works, installation and commissioning Works will include concrete and earthworks and installation of pre-cast concrete slabs and placement of 150t of structural steel for the Portal Door System 	6.0
2010	F	BMA Gregory	CHPP Shutdown	<ul style="list-style-type: none"> CHPP Shutdown 	2.2
2010	F	BMA Hay Point	Berth 2 and SL 2 Health and Safety Upgrade	<ul style="list-style-type: none"> Painting of Critical Structures Replacement of Inner and Outer Platforms Replacement of Walkways. 	2.5
2010	F	Broadspectrum	SR2 Upgrade at Blair Athol	<ul style="list-style-type: none"> Lift Study and Change out SR2 Boom at Blair Athol Mine 	1.1
2010	F	Broadspectrum	SR01 Boom Change Out	<ul style="list-style-type: none"> SR01 Boom Change Out (refer to photographs 6 & 7 attached) 	1.1
2010	F	Haypoint	Heath & Safety Upgrade Shutdown SL2	<ul style="list-style-type: none"> Supply and fabrication structural steel and change out of the shuttle boom wheels and rail system 	2.5
2009	F	BMA Hay Point	SL2 & Berth 2 Fender Upgrade	<ul style="list-style-type: none"> Major mechanical and structural works to upgrade SL2 	9.4



Date	Key	Client	Project/Equipment	Description	Approx Value \$M
2009	W	Rio Tinto Blair Athol Coal	Bucketwheel and two Booms design and manufacture	<ul style="list-style-type: none"> Detail design and drafting, supply, fabricate and protective coating of bucketwheels and booms (SR1 & SR2) 	3.6
2009	F	BMA – Hay Point Services	SL2 & Berth 2 Fender Upgrade Site Works	<ul style="list-style-type: none"> SL2 preliminary works including fabrication for upgrade works 	8
2008 - 2006	F	BMA Alliance Coal Operations Pty Ltd – Hay Point	Hay Point Shiploader – SL1	<ul style="list-style-type: none"> Design, Supply, Manufacture, Install and Commission new Luffing and Shuttle Winches Manufacture and Install complete new Wharf Rails, Bogies and Equalizers Design, Supply and Install 230m of Aluminium and Stainless Steel Walkway on Seaward Rail 	8.2
2008	F	BMA Alliance Coal Operations Pty Ltd – Crinum East Mine	Trunk East No. 1 Conveyor Installation	<ul style="list-style-type: none"> Set out and pour concrete foundations and installation of 330m of conveyor ground modules Erection of structural steelwork, chute-work, ladders, stairs, walkways, guarding and associated equipment Installation of all mechanical equipment including idlers, pulleys, drives, gearboxes, holdbacks, brake and associated equipment 	1.2
2008	W	Golding Contractors Pty Ltd	Forgan Bridge Project	<ul style="list-style-type: none"> Supply, Draft, Fabricate, Surface Treat and Deliver in excess of 700T of Temporary Support Steel Work for Forgan Bridge Project 	3.0
2008 - 2007	F	Dalrymple Bay Coal Terminal 7X Project	SR4 Relocation and Upgrade to RL2	<ul style="list-style-type: none"> Complete disassembly and relocation of 1200T Stacker/ Reclaimer SR4 and conversion to Reclaimer RL2 on a new bund, including new boom and hydraulic bucketwheel system. 	10.1
2007	F	Dalrymple Bay Coal Terminal 7X Project	Upgrades to Shiploader SL2	<ul style="list-style-type: none"> Major upgrades to boom structure, shuttle trolley and system, installation of new high power VVVF luff winch, upgrade of long travel motors and bogies to comply with AS 4324. 	3.6
2007	F	Dalrymple Bay Coal Terminal 7X Project	Upgrades to Stacker / Reclaimer SR5	<ul style="list-style-type: none"> Slew bearing replacement, rebore slew bores, upgrade rail clamps and structure to AS 4324. 	2.8
2007	F	BMA Alliance Coal Operations Pty Ltd – Crinum East Mine	Mechanical Installation – Ramp Conveyor	<ul style="list-style-type: none"> Set out and pour concrete foundations (500m³), assemble and erect 1800m of conveyor modules, drive station and head end discharge tower. 	4.2



Date	Key	Client	Project/Equipment	Description	Approx Value \$M
2007	F	Xstrata Coal Queensland Pty Ltd	Newlands Coal – 1200T Bin Refurbishment (2 off)	<ul style="list-style-type: none"> Supply, fabricate and install new 316 S/S Cones to 12m diameter raw coal surge bins. 	2.2
2007	F	Inbye Mining Services	Oaky North – North Shield Base Shutdown	<ul style="list-style-type: none"> Disassemble and replace bases on 100 roof supports, including replacement of all control valves and hydraulic lines. 	1
2007	F	Xstrata Coal Queensland Pty Ltd	Newlands Coal – Wash Plant	<ul style="list-style-type: none"> Six month contract for de-bottlenecking new plant, provision of maintenance labour and equipment. Manufacture and install modified steelworks. 	.6
2007	F	BMA Alliance Coal Operations Pty Ltd – Peak Downs	5 South ANFO Shed Upgrade	<ul style="list-style-type: none"> High pressure wash and repaint existing structure, supply and install S/S walkway, platforms and access stairs, form and pour additional concrete works. 	.5
2006	F	BMA Alliance Coal Operations Pty Ltd – Crinum East Mine	Trunk West Conveyor Installation	<ul style="list-style-type: none"> Supply and Place Concrete Footings Erect 780m of Conveyor Modules, Tail End, Drive Station and Transfer Tower and Galleries 	2.0
2006 - 2003	P	BMA Coal (BHP Billiton Mitsubishi Alliance)	Universal Dragline Retrofit rollout to fleet of 8 draglines in BMA Coal Mines in the Bowen Basin, Central Queensland	<ul style="list-style-type: none"> Total Project Management Services for the Design, Supply and Installation of the UDD System throughout four mines including fabrication of new 30t boom point and hoist drum and gearbox 	4.0
2005 - 2004	F	Port Waratah Coal Service	Reclaimer 1 Return to Service Upgrade	<ul style="list-style-type: none"> Bucketwheel, Bucketwheel Shaft and Drive Unit Replacement Complete Bucketwheel chute assembly Boom Conveyor Upgrade Drive Belts and Idles Centre Feed Chute and Feeder Replacement Luff Cylinder Replacement complete with Hydraulic upgrade Rocker Arm (Mast) Refurbishment/Replacement. Clevis's and Pins Slew drives and Pinion replacement Segmented Bull Gear Replacement and Epoxy Grouting Segmented Slew Bearing Change out and Epoxy Grouting 	2.5
2006 - 2005	F P W D	BMA Alliance Coal Operations Pty Ltd – Hay Point	Hay Point Shiploader # 1	<ul style="list-style-type: none"> Remove SL1 Boom, Manufacture new Boom Foot Blast and Paint complete repaired Boom Replace Boom and recommission SL1 	2.8



Date	Key	Client	Project/Equipment	Description	Approx Value \$M
2007	F	Thiess Pty Ltd – Collinsville Mine	Ongoing fortnightly shutdowns	<ul style="list-style-type: none"> CHPP – piping, pump, screen, and conveyor maintenance. 	
2005	F W	BMA Alliance Coal Operations Pty Ltd – Hay Point	Hay Point Lighting Towers	<ul style="list-style-type: none"> Fabricate and install 30m Lighting Towers on Berth 2 at Hay Point. 	
2005	W	Westhill Engineering	ROM Bin for Blackwater Comet Project	<ul style="list-style-type: none"> Fabricate and Weld ROM Hopper Bins. 	
2005	F W	BMA Alliance Coal Operations Pty Ltd – Hay Point	MD1 Mooring Dolphin Upgrade	<ul style="list-style-type: none"> Remove old mooring line winch and hooks and replace with two (2) new winches and hooks. Supply and install new S/S safety barriers 	
2005	F	BMA Alliance Coal Operations Pty Ltd – South Walker	Warehouse Duplication	<ul style="list-style-type: none"> Design, fabricate and erect a duplication of the existing warehouse, including concrete, steelwork, cladding and electrics 	
2005	W	Hitachi Construction Machinery (Australia) Pty Ltd	Hitachi 3500 Undercarriage Hitachi 3500 Boom Hitachi 5500 Bucket	<ul style="list-style-type: none"> Repair welding of cracks in undercarriage Repair 3500 boom cracks, stress relieve, rebore and rebush Boom Lugs Repair 5500 bucket including total NDT, repair weld all cracks and supply and install new wear package 	
2004	W	Thiess Pty Ltd	Collinsville Coal CHPP Upgrade	<ul style="list-style-type: none"> Supply and manufacture a complete Vibrating Screen Mechanism Beam and Deck Structure 	
2005	W	Anglo Coal (Capcoal Management) Pty Ltd	Capcoal Highwall Miner Shelters	<ul style="list-style-type: none"> Supply, Fabrication and Delivery of Highwall Miner Shelters 	
2004	F	HMP Constructions Pty Ltd	Helvory Mining, Goonyella Ltd	<ul style="list-style-type: none"> Relocation of Goonyella Workshop to Goonyella/Riverside Site 	
2005 – 2004	F	Boral Blue Circle Cement – NSW	Reclaimer 1 Overhaul	<ul style="list-style-type: none"> 3 Row Roller Slew Bearing Replacement and Epoxy Grouting 	
2004	F	Wesfarmers Curragh Coal Mine	Raw Coal Reclaimer A Raw Coal Reclaimer B	<ul style="list-style-type: none"> Capacity upgrade and refurbishment. Fabrication and Erect 	
2003	F	Pacific Coal Pty Ltd	BAC 2100 Shovel SD	<ul style="list-style-type: none"> Major shutdown Mechanical Repairs 	



Date	Key	Client	Project/Equipment	Description	Approx Value \$M
2002-2001	P	BMA Coal (BHP Billiton Mitsubishi Alliance)	Universal Dragline Conversion of DRE 23 at Peak Downs Mine	<ul style="list-style-type: none"> Total Project Management Services for the Design, Manufacture and Installation of the radically different hoist control system 	
2002	F	Blair Athol Coal (Rio Tinto)	Rail Load out Bin Reline Stages 1-3	<ul style="list-style-type: none"> Replace Lower Cone lining in 3000T capacity coal load out bin Replace Upper Cone lining in 3000T capacity coal load out bin Replace Cylindrical body lining in 3000T capacity coal load out bin 	
2002	F	Blair Athol Coal (Rio Tinto)	Rotary Breaker Changeout and Apron Feeder major overhaul	<ul style="list-style-type: none"> Remove rotary breaker No 1, replace drive end tyre and reinstalled. Apron feeder – replaced all flight chains and support rollers 	
2002	F	Temco – Bell Bay Tasmania	Slew Bearing Replacement on ship unloader	<ul style="list-style-type: none"> Project Managed the execution of the safe removal and replacement of the slew bearing, including in situ machining of upper and lower bearing path 	
2001	F	Mitsubishi Heavy Industries	SR4 Slew Drive Pinion Replacement	<ul style="list-style-type: none"> Remove and replace two slew drive pinion shafts with upgraded pinions 	
2001	P	Mitsubishi Heavy Industries	Preparation of Manuals and As Built Drawings for SR4 and SR5	<ul style="list-style-type: none"> Electrical and Mechanical manuals, preparation and distribution. Drawings 900 per machine 	
2001	F	Ports Corporation of Queensland	Dalrymple Bay Coal Terminal Ship Loader L8 Tripper Modifications	<ul style="list-style-type: none"> Re-align and fish plate all rail joints on the wharf tripper. Realign all tripper wheels carried modifications on tripper conveyor support structure 	
2001	F	John Holland Group	Thermit Welding of ST2 Rail Track at Dalrymple Bay Coal Terminal	<ul style="list-style-type: none"> Installation and Thermit welding of 106 joints, over 1.2 kms 	
2001	F	Blair Athol Coal (Rio Tinto)	SR2 Stacker Reclaimer 2	<ul style="list-style-type: none"> Bucketwheel, Bucketwheel shaft and gear box replacement Boom lacing replacement, upper and lower chords and Luff Cylinder replacements 	
2000	P	Ports Corporation of Queensland	Weighing of Shiploader at Dalrymple Bay Coal Terminal	<ul style="list-style-type: none"> Design reviews In conjunction with consulting engineers and execution of in situ weighing of 1200T rail mounted ship loader four bogies simultaneously at Dalrymple Bay Coal Terminal 	
2000	F	Mitsubishi Heavy Industries	Bucketwheel Shaft Replacement	<ul style="list-style-type: none"> Complete removal and installation of Bucketwheel shaft and gearbox 	
2000	P F	Mitsubishi Heavy Industries	Bund 5 Booster Pump	<ul style="list-style-type: none"> Design, installation and commissioning of a 20 litre per sec 300 psi water addition pumping system to SR4 and SR5 	



Date	Key	Client	Project/Equipment	Description	Approx Value \$M
2000-1999	P	BHP – Saraji Mine	DRE 11 Recovery	<ul style="list-style-type: none"> In conjunction with the OEM (Original Equipment Manufacturer) project managed the recovery of DRE 11 from collapsed in pit bench 	
1999	F	Mitsubishi Heavy Industries	Maintenance Shutdown on SR4	<ul style="list-style-type: none"> Removal of Bucketwheel Shaft, refurbishment with HVOF process and re installation. Disc Brake Retrofit. Managed the design and implemented the installation of anti collision system between SR4 and SR5 	

PERSONNEL

TEAM Engineering Services personnel consist of a core of highly skilled professional and trades qualified personnel with many years of experience in maintenance and construction in the following fields.

MINING

Coalfields of Bowen Basin and Hunter Valley

- Draglines and Shovels
- Stacker /Reclaimers
- Preparation Plants and ROM and Load Out Bins
- Coal Handling Conveyors

PORTS

Both Coal Handling and Other Minerals

- Shiploaders, Stacker Reclaimers
- Conveyors, Train Unloading Facilities
- Ship Unloaders
- Wharf Maintenance

CONSTRUCTION

Multi-Discipline Construction Projects

- Heavy Workshop and Office Facilities
- Bulk Storage Facilities (Sugar Sheds)
- Heavy Steel Erection, Conveyor Galleries
- Ship loaders, Stacker Reclaimers
- Aluminium Smelters, EOHT Cranes
- Dust Extraction and Filter Plants

PROCESS PLANTS

Multi-Discipline Construction and Maintenance Contracts

- Aluminium Cast houses
- Magnesia Plants
- Copper refineries
- Gold Plants – SXEW and CIP
- Mineral Sand Mining and Separation Plants

3D MODELLING/DRAFTING SERVICES

Concept Layout through to Manufacturing Drawings in

- 3D SolidWorks
- AutoCAD
- 3D Lift Studies and Simulations

Resumes of key staff are available upon request

AWARDS



COMMUNITY SERVICE & INVOLVEMENT

Supporter of the following community activities:

- Variety Club of Queensland
- PCYC
- The Cancer Council – Relay for Life & Australia’s Biggest Morning Tea
- Mackay Flood Victims
- Central Queensland University Engineering Undergraduate Society



7-9 Southgate Drive
Paget, Mackay Q 4740

Postal Address:
PO Box 5638
Mackay Mail Centre Q 4741

Jim Hegerty

B.E. (Mech), FIE Aust
Director

Team Engineering Services Pty Ltd
ABN: 97 089 427 010

Phone: (07) 4968 2000
Fax: (07) 4952 3111
Mobile: 0419 673 374
Email: j.hegerty@teameng.com.au
Web: www.teameng.com.au

Jim Hegerty, Managing Director

Jim has had 32 years in Engineering and Construction covering the Mining and related support industry. Against this back ground, he started TEAM Engineering in 1989 as a Project Management Consultancy.

Some nine years later in 1998, he realised that the Mining and Port industries required an Engineering Company that would support them in areas of engineering / steel fabrication / field service and steel erection / mine and port facility maintenance and up grading, so TEAM Engineering Services was established.



7-9 Southgate Drive
Paget, Mackay Q 4740

Postal Address:
PO Box 5638
Mackay Mail Centre Q 4741

Graham Broome Engineering Manager

Team Engineering Services Pty Ltd
ABN: 97 089 427 010

Phone: (07) 4968 2000
Fax: (07) 4952 3111
Mobile: 0427 523 885
Email: g.broome@teameng.com.au
Web: www.teameng.com.au

Graham Broome, Engineering Manager

Graham's contribution to TEAM is his 25+ years of engineering experience in both the construction and mining industries, worldwide.

Graham has managed many projects both nationally and internationally including Shiploader Upgrades, Universal Dragline Digging Modifications, CHPP feasibility studies, CHPP Construction, Commissioning and expansion projects to name a few. Graham's knowledge and experience is supported by his dedicated engineering and drafting team who offer valuable support services and alternative solutions to our company and external customers.



7-9 Southgate Drive
Paget, Mackay Q 4740

Postal Address:
PO Box 5638
Mackay Mail Centre Q 4741

Tom Chambers Sales Manager

Team Engineering Services Pty Ltd
ABN: 97 089 427 010

Phone: (07) 4968 2000
Fax: (07) 4952 3111
Mobile: 0409 888 402
Email: t.chambers@teameng.com.au
Web: www.teameng.com.au

Tom Chambers – Sales Manager

Tom has 24 years of experience in the mining and construction industries.

Initially working in Purchasing and Supply for a large multinational mining company, he later branched into Sales with an OEM of Draglines, Shovels and Drills. His work took him not only to the Queensland mines but also to the Hunter Valley in NSW and the Pilbara in WA. His next role was as Sales Manager for Parts and Aftermarket Equipment for a major heavy mining equipment manufacturer.

Tom has an acute customer focus and understanding of the needs of the industry. He prides himself at maintaining high levels of service and developing meaningful relationships with clients. Tom's role as Sales Manager with TEAM is about fostering relationships and facilitating the sales process right from before the tender is received to after the job is complete. His aim is to give TEAM clients the highest level of service and make TEAM their supplier of choice.



7-9 Southgate Drive
Paget, Mackay Q 4740

Postal Address:
PO Box 5638
Mackay Mail Centre Q 4741

Franz Andres
HSEQ Manager

Team Engineering Services Pty Ltd
ABN: 97 089 427 010

Phone: (07) 4968 2000
Fax: (07) 4952 3111

Email: f.andres@teameng.com.au
Web: www.teameng.com.au

Franz Andres – HSEQ Manager

Franz brings with him a Diploma of Occupational Health and Safety as well as being a Certified Workplace Rehabilitation Coordinator. Franz has an industry trade and 15+ years working in Safety Management.

Franz's aim is the continuous improvement and 100% compliant safety culture and has developed strategies to ensure this through comprehensive investigations and auditing processes.



7-9 Southgate Drive
Paget, Mackay Q 4740

Postal Address:
PO Box 5638
Mackay Mail Centre Q 4741

Phil Geach
Field Services Manager

Team Engineering Services Pty Ltd
ABN: 97 089 427 010

Phone: (07) 4968 2000
Fax: (07) 4952 3111

Mobile: 0409 888 548
Email: p.geach@teameng.com.au
Web: www.teameng.com.au

Phil Geach – Field Services Manager

With over 15 years industry experience and a solid diesel fitting background, Phil's management of the Field Services area of the business is second to none. Phil has over 8 years experience in supervisory and management positions including supervising electric rope shovel shutdowns and repairs on various mobile mining equipment. Phil understands the importance to the Client of being on budget on time delivery and ensures the highest level of customer service.

Phil's insight and experience in the management and daily processes of a Port facility will be an asset to TEAM.



7-9 Southgate Drive
Paget, Mackay Q 4740

Postal Address:
PO Box 5638
Mackay Mail Centre Q 4741

David Moss
Workshop Manager

Team Engineering Services Pty Ltd
ABN: 97 089 427 010

Phone: (07) 4968 2000
Fax: (07) 4952 3111

Mobile: 0408 013 846
Email: d.moss@teameng.com.au
Web: www.teameng.com.au

David Moss. Workshop Manager

As a qualified boilermaker of 18 years, David brings to TEAM Engineering Services 8 years experience as a workshop supervisor. His extensive experience working in the heavy engineering industry, primarily in the areas of Fabrication and Refurbishment of mining and structural components is an asset to the Mackay workshop. David has also worked in the sugar industry and possesses solid knowledge of pressure welding processes. David's supervisory skills ensures projects are completed on time and on budget.