

SHANGHAI DENAIR COMPRESSOR CO.,LTD.
德耐尔空气压缩机

www.denaircompressor.com

DENAIR®

上海德耐尔压缩机械有限公司
SHANGHAI DENAIR COMPRESSOR CO.,LTD.

研发中心、工厂：上海南翔工业开发区德力西路666号
R&D Center, Factory: No. 666, West Deli Road,
Nanxiang industrial development zone, Shanghai, China

中国销售总部、长三角销售服务中心
Sales Headquarters

地址：上海市谷阳北路166号大江商厦8F
Address: 8 Floor, Dajiang Commercial Building, NO. 166
North Guyang Road, Songjiang District, Shanghai, China
电话(Tel): (86-21) 37831821 (86-21) 37831822
传真(Fax): (86-21) 37831812
网址(Website): www.denaircompressor.com

国际贸易部
International Trade Department

电话(Tel): (86-21) 37831829 (86-21) 37831827
传真(Fax): (86-21) 37831812
网址(Website): www.denaircompressor.net
Email: sindenair@gmail.com

华南区销售服务中心
South China Sales and Service Center

地址：海南省长沙市岳麓路228号
Address: No. 228 Yingshan Road, Changsha City, Hunan Province, China
电话(Tel): 0731-88624398
传真(Fax): 0731-88624378

华中区销售服务中心
Central China Sales and Service Center

地址：武汉市科技大厦1116室
Address: Room 1116, Science and Technology Building,
Wuhan City, Hubei Province, China
电话(Tel): 027-65692317
传真(Fax): 027-85692417

安徽销售服务中心

Anhui Province Sales and Service Center
地址：合肥市胜利路元一时代广场
Address: Yuanyi Times Square, Shengli Road, Hefei City,
Anhui Province, China
电话(Tel): 0551-4224698
传真(Fax): 0551-4224901

西北区销售服务中心

Northwest China Sales and Service Center
地址：兰州市临夏路139号
Address: No. 139 Linxia Road, Lanzhou City, Gansu Province, China
电话(Tel): 0931-8471621
传真(Fax): 0931-8471531

华北区销售服务中心

North China Sales and Service Center
地址：北京市良乡镇西潁东里1号楼
Address: Building No. 1, Xilu Dongli, Liangxiang Town,
Beijing Province, China
电话(Tel): 010-89357108
传真(Fax): 010-89365975

东北区销售服务中心

Northeast China Sales and Service Center
地址：哈尔滨市南岗区西大直街99号
Address: No. 99 West Dazhi Street, Nangang District,
Harbin City, Heilongjiang Province, China
电话(Tel): 0451-82600177
传真(Fax): 0451-82602755

400热线：400 777 0802

国家一级节能认证产品
空压机行业最低噪音标准

DENAIR®



德耐尔空气压缩机
DENAIR AIR COMPRESSOR

上海德耐尔压缩机械有限公司
SHANGHAI DENAIR COMPRESSOR CO.,LTD.

卓越品质 · 前进动力 Excellent Quality · Advanced Power



德耐尔空气压缩机
DENAIR AIR COMPRESSOR

企业简介 Company Profile

上海德耐尔压缩机械有限公司是注册于中国上海的大型专业空压机生产出口企业，针对国内外不同市场、不同工况设计，产品设计与配置完全参照德国德耐尔标准。

总部位于德国维斯特法伦州科隆市的德国德耐尔集团是德国机械百强企业，自1875研制出第一台冷媒压缩机组以来，一直致力气体压缩机领域的研发与生产，是德国在气体压缩领域著名品牌，其产品包括双螺杆空压机、活塞式空压机、罗茨与轴流风机、真空泵、移动式空压机、中高压空压机、无油空压机等。

设在科隆的欧洲研发中心，拥有世界上最精确的三座标测量仪、专用机床与专用磨床，以确保对核心技术的研发不断取得突破，德耐尔集团独立开发的双螺杆空压机DNA主机始终保持其行业领先地位，比一般主机节能10%或以上。

1998年，德耐尔集团在上海设立代表处，开始在中国市场销售原装德耐尔双螺杆压缩机，并获得一致好评，2006年，德耐尔集团注册成立上海德耐尔压缩机械有限公司，在上海嘉定设立研发中心、试验工厂与整机仓库，开始引入德耐尔集团技术并针对中国使用工况进行研发与生产，规模化的生产德耐尔系列产品，并具备年产5万台套整机的生产能力。

目前，上海德耐尔压缩机械有限公司销售网络在中国划分为华东、华南、华北、西北、华中、东北、西南和长三角八个大区域。国外区域包括中东，南美，东南亚，北美，澳大利亚和美国等。总经销点超过200家，在主要城市都设立了办事机构，并有优秀服务人员长期在各地为您提供最优质快捷的机组保养和维修服务。

以保持核心技术领先为前提，以严谨的售后服务为保障，德耐尔愿真正成为您最贴心的朋友。
最新技术、最大效能——德耐尔压缩机。

Shanghai Denair Compressor Co., Ltd. is registered in shanghai large-scale professional compressor producing and exporting enterprise. Designed by different markets and different projects condition, the configuration reference Germany Denair standard. Germany Denair Group, whose headquarter is located in Cologne City, Westfalen State of Germany, is the top 100 machinery enterprises and one of the three famous brands in the fields of compressor in Germany. Since 1875 the first refrigerant compressor unit was produced, we have been dedicated to researching, developing and producing compressors. Our products cover: double screw air compressors, piston air compressors, root's blowers, axial flow fan, vacuum pump, portable air compressors, high/medium pressure air compressors and oil free air compressors, etc.

The European R&D center located in Cologne has the most accurate three-coordinates measuring machine, special purpose machine and special purpose grinder in the world, ensures the R&D of core technology to make breakthroughs continuously. The double screw air compressors developed by Denair group which keeps the leading position in this field and saves energy 10% or more.

In 1998, Shanghai office of Denair group was established and started to sell original Denair double screw air compressors in Chinese market. We have developed a good reputation. In 2006, Shanghai Denair Compressor Co., Ltd. was established; we set up the R&D center, pilot plant and warehouse in Jiading District, Shanghai; we brought in precision equipment, R&D and the Denair methods of production to manufacture high quality units. During the same year, one of the biggest compressor factories in China was set up in Changsha city, Hunan Province; production ability of Denair products at this location is 50000 units per year.

At present, the sales and service network for Shanghai Denair Compressor Co., Ltd. is divided into Domestic 8 areas: East China, South China, North China, Southwest China, Central China, and Northeast China. The abroad including: Middle East, South America, Southeast Asia, North America, Australia and United States etc. There are over 200 distributors and branches in China's major cities. Our excellent service staff will supply you the best maintenance and repair service in various regions.

Because of holding latest core technology and strict after service, Denair would like to become your best friend in compressed air systems.

The latest technology and highest efficiency——Denair Compressor.



德耐尔空气压缩机
DENAIR AIR COMPRESSOR

德耐尔空气压缩机 DENAIR AIR COMPRESSOR

132年历史，德国工厂大门
Germany AERZENER factory 132 history



遍布全球各地区生产及销售网点 PRODUCE AND MARKET THROUGHOUT THE WORLD



在全球已有29个国家的实际用户
Possess actual users in 29 countries and regions



售后服务承诺

- 一、质量保证
主要零部件均为进口部件〔详见主要零部件供货厂家及品牌〕
- 二、保修期
整机保修一年，主机保修五年(易损件除外)终身维护。
- 三、安装调试
将为客户提供调试及安装指导，所有服务人员都经过我公司严格技术培训。
- 四、售后服务
我公司在中国主要城市都设有办事机构和服务网络，我公司将在接到用户通知后及时给予客户答复，24-48小时内赶到现场为客户解决问题。
- 五、备品备件
我公司终身供应最优惠价格的备品备件。

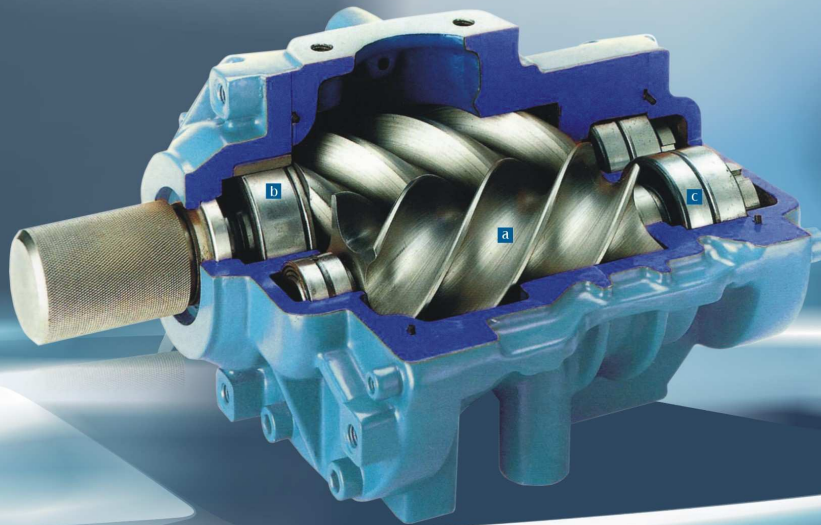


AFTER-SALES SERVICE COMMITMENTS

- Quality guarantee
All the key parts are imported from overseas (See the manufacturers and brands of key parts for particulars)
- Warranty period
The complete machines are provided with one-year warranty, and the air end with five-year warranty and lifetime maintenance (with the exception of wearing parts)
- Installation and commissioning
Provide customers with installation and commissioning instructions, and all service-providing personnel are strictly trained technically by our company.
- After-sales services
Our company has offices and service network in every major cities in China, giving prompt replies to customers after notified and arriving at different sites within 24-48 hours for troubleshooting.
- Spare parts
Our company always supply spare parts on most favorable terms.

主机介绍 CHINA GERMANY DENAIR
Introduction to air ends

无振动 低噪音 德国原装的完美诠释
大转子 低转速 直联机
其它厂家从活塞式过度到螺杆式，
而我们一直是专业从事各种螺杆机的开发与制造



a 转子

转子选用不对称型线，运行效率高，选用圆柱滚珠轴承，提高了承载能力。支撑着转子可靠地运行，磨损小，维修保养费用低，主机寿命长、可靠性安全性高。

ROTOR

Rotors are asymmetric in profile, backed up by ball bearings and roller bearings. Operates at a low speed, thereby low in abrasion and maintenance expenses, air end is long service life. Helical gears can produce axial force to kill some acting force, which reduces the load of the bearing of air end.



b 轴密封装置

配有金属框架的双轮氟橡胶环能够承受一定的压力，形成可润滑的轴密封装置。轴上的衬套运用我公司的独家技术进行特殊加工，具有完善的密封性能和超长的寿命。

SHAFT SEALING DEVICE

Our compressors have a mating metal-framed double-rimed fluororubber ring able to withstand some pressure and form a lubricatable shaft sealing device. The shaft liner is specially processed with our unique technology, with perfect sealing performance and super-long useful life.

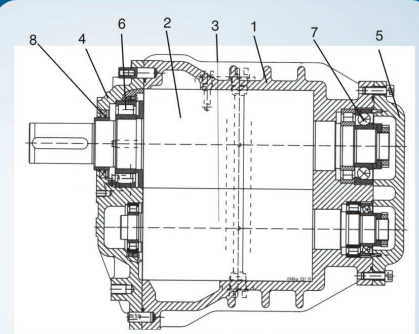


c 轴承

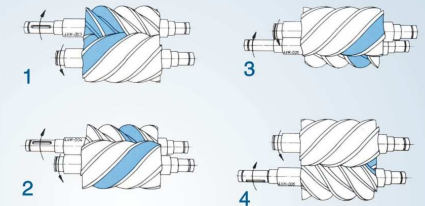
为了保证轴承的转速和负载量，螺杆式压缩机采用SKF轴承重能力相当高的优质轴承，保证了较长的轴承寿命。

BEARING

SKF bearings, which are of high quality and can withstand unusual weight, are adopted for the screw air compressors to guarantee the rotation and load of bearings and thereby ensure long service life of bearings.



- | | |
|-----------|-------------------------------------|
| 1. 壳体 | 1. Casing |
| 2. 阳转子 | 2. Male rotor |
| 3. 阴转子 | 3. Female rotor |
| 4. 驱动端盖板 | 4. Cover plate at the drive end |
| 5. 非驱动端盖板 | 5. Cover plate at the non-drive end |
| 6. 轴承 | 6. Bearing |
| 7. 轴承 | 7. Bearing |
| 8. 轴封 | 8. Shaft seal |



- 1 吸气
空气进入进气端转子的螺旋槽
- 2和3 压缩
随着转子的旋转，进气口关闭，润滑油注入
容积减少同时气体压力升高
- 4 排气
压缩过程结束，最终压力获得，排气过程开始
- 1 air intake
Air enters the spiral groove of the rotor at the air intake end.
- 2 and 3 compression
The air inlet closes and lubricating oil enters in response to the rotation of the rotor. The volume decreases and meanwhile the gas pressure rises.
- 4 air discharge
As the compression ends, resultant pressure is obtained and air discharge starts.

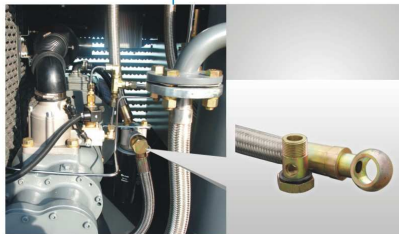
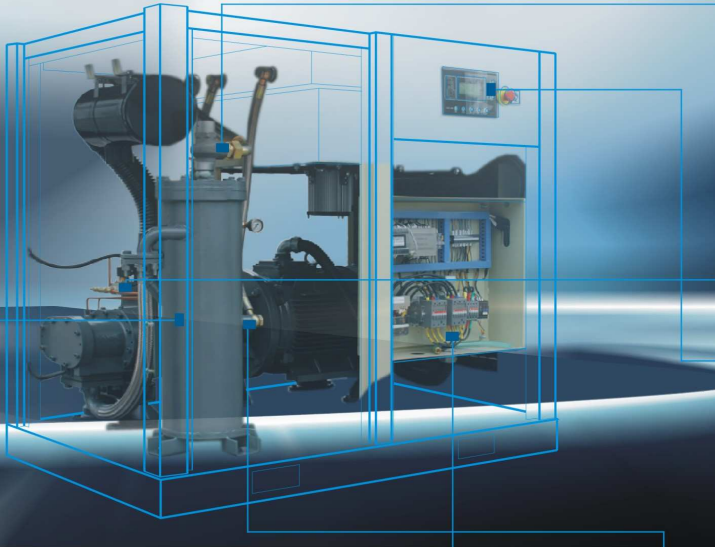
安装、维护、保养简便

Convenient to install and maintain
No vibration, low noise, original from Germany
Big rotors, low rotation speed, direct driven
We have been specializing in developing and manufacturing various screw air compressors

组件介绍 CHINA GERMANY DENAIR Component Overview

原装主机和进口零配件组装的压缩机性能更稳定，出气量更大，是国内同行业所不能达到的。

The compressors assembled with original air end and imported parts have more stable performance and generate greater air output, which is unrivaled in the same industry in China.



系统优化设计 Optimum design of the system

技术人员对系统优化设计使机组运行故障大幅降低，出气量更加充分，使耗能比处于同行的先进行列。

The technicians optimize the system to largely reduce errors in running, to make the air output more sufficient and make the energy consumption advanced in the industry.



智能控制 Intelligent control

业内领先的定时开关机全自动控制中心，电器元件均选用享誉世界的知名电器产品，让您在使用空压机的过程中体会到由此带来的可靠感与迅捷感。

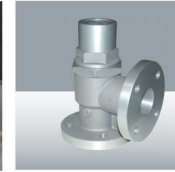
The industry leading fully automatic control center for time switch and electric components are all chosen from world-renowned electric products and bring to you the resulting sense of reliability and convenience in the use of our air compressors.



高密封性 Good sealing performance

高密封性是我们一直追求的目标，独特的工艺设计与材料应用，使您无漏油、漏气等空压机通病的困扰。

Good sealing performance has been an objective we pursue immutably. Unique process design and material application free you from the headaches of common faults in air compressors such as oil leakage, air leakage, etc.



压力维持阀 Pressure maintaining valve



进口监控器 Inlet monitor

- LCD中英文显示。
- 对电机具有短路、堵转、缺相、过载、不平衡等全方位保护功能。
- 对电机具有起停控制、运行控制。
- 对空压机进行逆转保护。
- 对多点温度进行检测与控制保护。
- 自动调节负荷率控制保护。
- 高度集成、高可靠性、高性价比。
- 远程/机旁选择控制。
- 联动/独立选择运行。
- RS-485通讯功能。

- LCD display in Chinese and English.
- All-round protection of the motor against short circuit, locked rotor, phase loss, overload, imbalance, etc.
- Motor on-off control and operation control
- Protection of the air compressor against reverse rotation
- Measuring and control of temperature at several points
- Automatic regulation of load rate control protection
- High integration, high reliability, and high cost-performance ratio
- Remote/machine-side selection control
- Interlock/independent selection control
- RS-485 communication function



进气阀 Air inlet valve

高品质进气阀可根据终端气源需求的大小，对压缩机气量进行0~100%无级调整，从而降低了能耗，进气阀内设有单向阀，以防止突然停机时，油和空气回流。多种阀门均可用于固定式或移动式压缩机上。

The high-quality air inlet valves can make 0-100% stepless adjustment to the air quantity of a compressor depending on specific demands for terminal air supply, thus reducing the energy consumption. The non-return valve is disposed in an air inlet valve to prevent backflow of air and oil in case of unexpected halt. Several kinds of valves can be applied to stationary or portable compressors.



原装主机 Original air end



原装进口轴承 Genuine imported bearing

主机采用性能优良的SKF轴承，更好的提升了主机的使用效率，减少磨损，并且有利于增加啮合的平稳性。

Excellent SKF bearings are adopted for air end to better improve their use efficiency, reduce abrasion and help to make the engagement more stable and smooth.

变频式螺杆空气压缩机

Variable frequency air compressor

运行更加可靠、高效节能

CHINA
GERMANY DENAIR



变频空压机介绍

每款机型都有相对应的变频器支持，变频器通过改变电机转速来实现气量控制，使产气量和电耗平滑地跟随气量同步变化，当用气量减少，供气减少，电耗也减少，以节约能源，容积流量从2~60m³/min排气量从0.5~1.3Mpa均有相对应机型，用户可按需求选择变频器。

变频空压机有着和DA其他机型同样所具备的高品质外、优质变频器对变频技术将进一步改善节能效果。通过变频器内部的PID调节器能平缓启动，对电网冲击小，电流矢量控制低频启动力矩大，运行电流小，当用气量小时，可进行休眠状态，大大地节约了能源，并且数模转换精确高，一体化设计故障点少。

压缩机主机寿命长

转子采用不对称型线，用球轴承和滚珠轴承支撑并低速运行，所以磨损少，维修保养费用小，主机寿命长！

机器型号 Model	DVA-15A	DVA-20A	DVA-25A	DVA-30A/W	DVA-40A/W	DVA-50A/W	DVA-60A/W	DVA-75A/W	DVA-100A/W	DVA-120A/W
冷却方式 Type of cooling	A-Air cooling 风冷 W-Water cooling 水冷									
容积流量/压力 Air delivery / Working pressure	0.68-1.77 0.96-2.47 1.24-3.17 1.52-3.87 2.08-5.27 2.56-6.47 3.2-8.07 4.2-10.57 5.4-13.57 6.4-16.07									
转速 Rotation speed	0.64-1.68 0.88-2.28 1.16-2.98 1.4-3.58 2.0-5.08 2.46-6.08 3.08-7.78 3.92-9.88 5.16-12.98 6.16-15.48									
电压频率 Voltage	0.26-1.410 0.84-2.110 1.08-2.710 1.28-2.810 1.72-4.210 2.2-5.510 2.6-6.510 3.4-8.510 4.4-11.110 5.6-14.010									
启动方式 Starting method	AC变频Y-Δ, AC power, variable frequency Y-Δ starting									
噪音 Noise	72 ± 5, 按国标GB/T4980-2003测量 72 ± 5, measured according to the international GB/T4980-2003 standard									
排气含油量 Oil content of discharged air	< 3ppm									
出口空气温度 Outlet air temperature	环境温度+15℃ Ambient temperature + 15									
冷却风量 Cooling air volume	80 100 145 145 255 255 268 400 400									
冷却水量 Cooling water volume	L/min 16 21 26 33 42 56 65									
接管口径 Pipe connection diameter	1" 1" 1" 1" 1 1/4" 1 1/4" 1 1/4" 2" 2" 2"									
整机重量 Weight	Kg 475 560 560 640 900 980 1050 1250 1850 2100									
外形尺寸 Dimension	长 L 1150 1150 1200 1200 1350 1350 1350 1950 1950 2100 宽 W 700 700 850 850 950 950 950 1320 1320 1320 高 H 1180 1180 1300 1300 1600 1600 1600 1570 1570 1700									

Introduction

Every model has a corresponding variable frequency compressor, which controls the air flow by changing the rotational speed of motor, making the air output and electricity consumption smoothly vary synchronously with the different air flow. When the air use quantity falls, the air supply decreases and so does the electricity consumption for energy conservation. For capacity ranging from 2 to 60m³/min and discharge pressure from 0.5 to 1.3Mpa, there are corresponding models available to customers with different requirements.

In addition to that variable frequency air compressors have the same good quality as other DA models, the quality frequency converter will further better the result of energy conservation. With the help of the PID regulator disposed in a frequency converter, it can start up smoothly, causes little impact on the power grid and generates great low-frequency start moment of current vector control and small running current. When the air use decreases, the compressors enter the sleeping status, saving considerable energy. Moreover, digital to analog conversion is highly accurate and the integration design features few fault points.

Life of air end

Rotors are asymmetric in profile and backed up by ball bearings and roller bearings and operate at a low speed, thereby low in abrasion and maintenance and repair expenses and the air end being longin service life. Helical gears can produce axial force to kill some acting force, which reduces the load of the bearing of air end.



运行更加可靠

变频软启动避免了电网冲击，同时避免自身的机械冲击。免除机组长时间高速运行的不利因素。无接触器，免除点接触故障。

More reliable operation

With variable frequency soft start, it avoids grid impact, self-engendered mechanical impact, and negative factors of lasting high-speed operation of the compressor. Without the participation of a contactor, it prevents point contact failure.

可任意设定所需压力，并保持供压恒定

满足用户在3-14bar的范围内任意设定压力，而不需要调换齿轮或皮带。当用气量增加时，机组通过转速自动的加快来增加产气量，以使压力下降，确保恒压供气。当用气量减少时，机组通过转速自动的减慢来减少产气量，以使压力上升，并继续恒压供气。

Setting desired pressure at discretion, and maintaining constant pressure Users can set pressure between 3-14bar at their discretion, without changing the gear or belt. When air use increases, the unit increases air output through automatic acceleration of rotational speed to avoid a fall in pressure and ensure air supply at constant pressure; when air use decreases, the unit increases air output through automatic deceleration of rotational speed to avoid a rise in pressure and ensure continued air supply at constant pressure.



机器型号 Model	DVA-30GA/W	DVA-40GA/W	DVA-50GA/W	DVA-60GA/W	DVA-75GA/W	DVA-100GA/W	DVA-120GA/W	DVA-150GA/W	DVA-175GA/W	DVA-200GA/W	DVA-250GA/W	DVA-270GA/W	DVA-300GA/W	DVA-330GA/W	DVA-420GW
冷却方式 Type of cooling	A-Air cooling 风冷 W-Water cooling 水冷														
容积流量/压力 Air delivery / Working pressure	1.52-3.87 2.08-5.27 2.56-6.47 3.2-8.07 4.2-10.57 5.4-13.57 6.4-16.07 8.32-20.87 9.6-24.07 11.08-27.77 13.0-32.57 13.6-34.07 14.8-36.07 17.2-43.07 21.6-54.07														
转速 Rotation speed	1.4-3.5/8 2.0-5.0/8 2.46-6.0/8 3.08-7.7/8 3.92-9.8/8 5.16-12.9/8 6.16-15.4/8 7.8-19.5/8 9.2-23.0/8 10.2-25.5/8 12.4-31.0/8 12.8-32.0/8 14.0-34.5/8 16.2-40.5/8 18.8-47.0/8														
电压频率 Voltage	0.26-1.410 0.84-2.110 1.08-2.710 1.28-2.810 1.72-4.210 2.2-5.510 2.6-6.510 3.4-8.510 4.4-11.110 5.6-14.010 6.3-15.810 7.4-18.510 9.0-22.510 9.8-24.510 11.2-27.010 12.0-30.010 13.4-33.010 15.6-39.010														
启动方式 Starting method	AC变频Y-Δ, AC power, variable frequency Y-Δ starting														
噪音 Noise	72 ± 5, 按国标GB/T4980-2003测量 72 ± 5, measured according to the international GB/T4980-2003 standard														
排气含油量 Oil content of discharged air	< 3ppm														
出口空气温度 Outlet air temperature	环境温度+15℃ Ambient temperature + 15														
冷却风量 Cooling air volume	145 255 255 255 268 400 400 600 630 850 850 875 900 960														
冷却水量 Cooling water volume	L/min 16 21 26 33 42 56 65 87 101 118 140 145 174 184 230														
接管口径 Pipe connection diameter	1" 1 1/4" 1 1/4" 1 1/4" 2" 2" 2" DN65 DN65 DN65 DN80 DN80 DN100 DN100 DN100														
整机重量 Weight	Kg 640 900 980 1050 1250 1850 2100 1280 2750 3200 3700 4000 4250 4800 5200														
外形尺寸 Dimension	长 L 1380 1595 1595 1595 2100 2100 2100 2500 2500 2650 2650 2650 3150 3150 4600 宽 W 850 1000 1000 1000 1250 1250 1320 1450 1450 1550 1550 1550 1800 1800 2300 高 H 1150 1365 1365 1365 1700 1700 1700 1900 1900 1900 1900 1900 2020 2020 2400														

联轴器传动螺杆压缩机

CHINA GERMANY DENAIR

Direct driven screw compressor



配置特点

- > 1.精密加工的中心托架，使电机与主机永久对中。
- > 2.采用高弹性联轴器，机器运转平稳，弹性体寿命长。
- > 3.排气管采用双层波纹管，油路采用特制耐温125℃高压软管。
- > 4.针对某些地区特高温环境，采用大面积板式换热器和高效水冷却器。

高品质的联轴器弹性体，可缓冲运转时的不平衡力矩，并能给予补偿。弹性体为渐开线弧面设计，有效的避免了应力的集中，加强了弹性体的缓冲能力，使其承载能力更大，并且优质的材料使其具有良好的耐磨性和更有效的吸收转动时的震动从而达到无噪音的效果。

Configuration characteristics

1. A precisely-made central bracket is used to keep the motor aligned permanently with the air end
2. A highly resilient coupling is adopted to make the compressor operate smoothly, and the elastomer is long in useful life.
3. The discharge pipe is double-wall corrugated pipe, and the oilway uses a special high-pressure hose which is resistant to temperature up to 125 °C.
4. For the extremely high temperature conditions in some districts, the large-area plate heat exchanger and high-efficiency water cooler are used.

High-quality direct driven elastic body can buffer and compensate for the imbalanced moment of operation. The elastomer is designed into an involute cambered surface, which effectively avoids stress concentration and improve the buffering effect of the elastomer to increase its bearing capacity. In addition, the high-quality materials ensure excellent durability for the elastomer and can better absorb the vibration arising from the rotation to remove noise.

可靠性

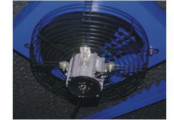
双螺杆主机中没有易损件，在保养良好的条件下无故障运行时间可达4-8万小时。

Reliability

Since no wearing parts are used for the double-screw air end, it can operate for up to 40,000-80,000 hours between failure if well maintained.



进气阀 Air inlet valve



智能温控冷却风扇 Intelligent thermal controlled cooling fan



电机 Motor

离心风机螺杆空气压缩机系列

CHINA GERMANY DENAIR

Centrifugal screw air compressor series

离心式螺杆空气压缩机系列

超轻结构，但结构强度远大于轴流风机，动平衡性能好，故具有低振动、低噪音，离心风机的气动性能优于轴流风机，功耗较低，效率高，具有可靠的运行寿命。配置在螺杆空气压缩机上是绝佳的选择。

Centrifugal screw air compressor series

It is made of super light structure, but the structural strength is much better than axial fan. It is provided with good dynamic balancing performance, so it is of low vibration and low noise. The pneumatic performance of the centrifugal fan is better than that of axial fan. It is all provided with lower power consumption and high efficiency. It is of stable serviceable life. It is the best choice to set it on the screw air compressor.



低振动
low vibration
低噪音
low noise
低功耗
low power consumption

机器型号 Model	DA-30GA/W	DA-40GA/W	DA-50GA/W	DA-60GA/W	DA-75GA/W	DA-100GA/W	DA-120GA/W	DA-150GA/W	DA-175GA/W	DA-200GA/W	DA-250GA/W	DA-275GA/W	DA-300GA/W	DA-330GA/W	DA-420GA/W	DA-470GA/W	DA-550GA/W	DA-600GA/W	DA-670GA/W	DA-750GA/W	
冷却方式 Type of cooling	A-Air cooling 风冷 W-Water cooling 水冷																				
容积流量/压力 Air delivery / Working pressure	3.8/7	5.2/7	6.4/7	8.0/7	10.5/7	13.5/7	16.0/7	20.8/7	24.0/7	27.7/7	32.5/7	34.0/7	36.6/7	43.0/7	54.0/7	64.0/7	70.0/7	74.0/7	82.0/7	102.0/7	
压缩机功率 Motor power	22	30	37	45	55	75	90	132	160	185	200	220	250	315	355	400	450	500	550	550	
转速 Rotation speed	2940	2945	2945	2950	2965	2965	2965	2975	2975	2975	2975	2975	2980	2980	2980	2985	2985	2985	2985	2985	
电压/频率 Voltage	380/50																				
启动方式 Starting method	Y-Δ																				
噪音 Noise	72 ± 5, 按国标GB/T4980-2003测量 72 ± 5, measured according to the international GB/T4980-2003 standard																				
排气含油量 Oil content of discharged air	< 3ppm																				
出口空气露点 Outlet air temperature	环境温度+15°C Ambient temperature + 15																				
冷却风量 Cooling air volume	145	255	255	255	268	400	400	600	630	850	850	850	875	900	960	1130					
冷却水量 Cooling water volume	16	21	26	33	42	56	65	87	101	118	140	145	174	184	230	270	298	325	355	425	
接管口径 Pipe connection diameter	1"	1 1/4"	1 1/4"	1 1/4"	2"	2"	2"	DN65	DN65	DN65	DN80	DN80	DN100	DN100	DN125	DN150	DN150	DN150	DN200	DN150	
整机重量 Weight	640	900	980	1050	1250	1850	2100	2580	2750	3200	3700	4000	4250	4800	5200	5600	6200	7000	7000	7000	
外形尺寸 Dimension	长 L	1380	1595	1595	1595	2100	2100	2100	2500	2500	2650	2650	2650	3150	3150	4600	4600	4600	4800	5000	500
	宽 W	850	1000	1000	1000	1250	1250	1320	1450	1450	1550	1550	1550	1800	1800	2300	2300	3300	3300	3300	3300
	高 H	1150	1365	1365	1365	1700	1700	1700	1900	1900	1900	1900	1900	2020	2020	2400	2400	3000	3200	3200	3000

皮带传动螺杆空气压缩机系列 Belt-type screw air compressor series

CHINA
GERMANY DENAIR



控制面板

智能化微电脑控制技术可在你的指令下全面监控和管理整机，远程控制可实现无人值守运行，人性化的人机界面以文字形式，显示指令与参数，并具有自诊断故障和报警功能及自动调节容积流量。

油过滤器

旋转式过滤器，完全滤除润滑油当中的杂质，易于更换，无渗油之忧。

冷却器

采用低温差设计，增加换热面积，更适于高温、高温的工作环境。

电动机

采用优质名牌高效电动机，防护等级P54，绝缘等级F级。

隔音罩

全封闭静音箱体式设计，箱内侧贴有吸音海绵，可有效吸收噪音，比同类机器噪音低3-5dB(A)，整体结构布局合理，检修极为方便。

Control Panel

Intelligent microcomputer-based control technology can monitor and control in all aspects the complete machine following your instructions. Remote control realizes unattended operation, and the user-friendly human-machine interface displays instructions and parameters in written form. Also, it can function to self diagnose faults, give warning and automatically regulate the capacity.

Oil filter

Rotary filters are applied to completely remove the impurities in the lubricating oil, easy to replace and free of oil impregnate.

Cooler

It is designed for low temperature difference to increase heat exchange area, and ideal to be applied to high-temperature and high-humidity operating environment.

Motor

First-class motors are adopted, with the level of protection being Ip54 and insulation level being F.

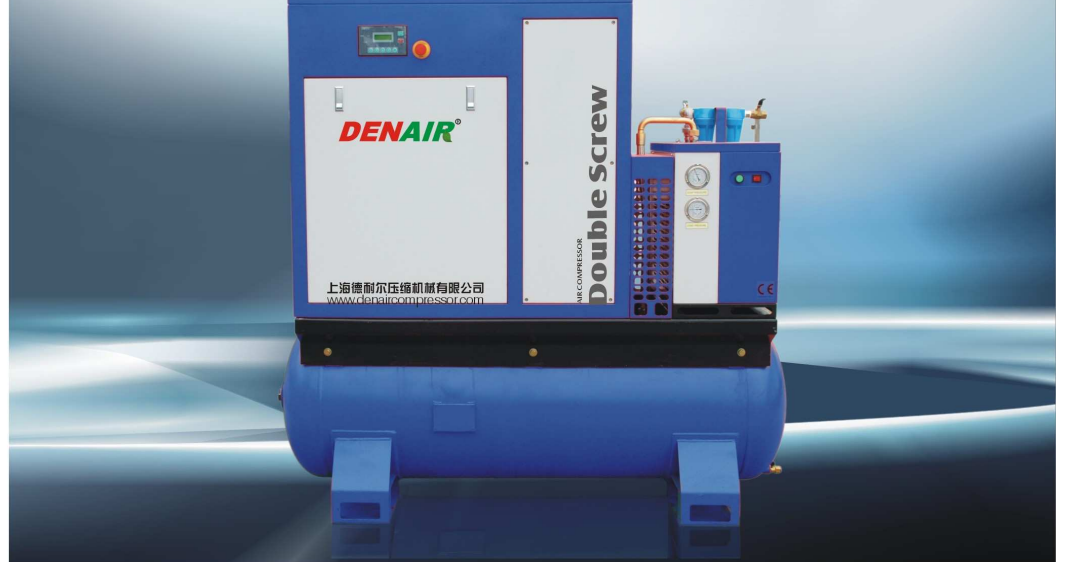
Acoustic enclosure

It is designed into fully-closed mute box, in which sound-absorbing sponge are attached for effective absorption of noise, thereby making the noise 3-5dB(A) lower than that made by the compressors of the same kind. It is reasonably structured overall and very easy to maintain and repair.

机器型号 Model	DA-10A	DA-15A	DA-20A	DA-25A	DA-30A/W	DA-40A/W	DA-50A/W	DA-60A/W	DA-75A/W	DA-100A/W	DA-120A/W	
冷却方式 Type of cooling	A-Air cooling 风冷						W-Water cooling 水冷					
容积流量/压力 Air delivery/Working pressure	1.1/7	1.7/7	2.4/7	3.1/7	3.8/7	5.2/7	6.4/7	8.0/7	10.5/7	13.5/7	16.0/7	
压缩机功率 Motor power	1.0/8	1.6/8	2.2/8	2.9/8	3.5/8	5.0/8	6.0/8	7.7/8	9.8/8	12.9/8	15.4/8	
转速 Rotation speed	0.8/10	1.4/10	2.1/10	2.7/10	2.8/10	4.2/10	5.5/10	6.5/10	8.5/10	11.1/10	13.0/10	
电压/频率 Voltage	0.6/13	1.2/13	1.7/13	2.2/13	2.2/13	3.4/13	4.6/13	5.4/13	7.1/13	9.4/13	10.5/13	
启动方式 Starting method	Y-Δ						Y-Δ					
噪音 Noise	72 ± 5, 按国标GB/T4980-2003测量 72 ± 5, measured according to the international GB/T4980-2003 standard											
排气含油量 Oil content of discharged air	< 3ppm											
出口空气温度 Outlet air temperature	环境温度+15°C Ambient temperature + 15											
冷却风量 Cooling air volume	80	80	100	145	145	255	255	255	255	268	400	
冷却水量 Cooling water volume	L/min		16		21		26		33		42	
接管口径 Pipe connection diameter	3/4"	1"	1"	1"	1"	1 1/4"	1 1/4"	1 1/4"	2	2"	2"	
整机重量 Weight	410	475	560	640	640	900	980	1050	1250	1850	2100	
外形尺寸 Dimension	长 L	800	1150	1150	1200	1200	1350	1350	1350	1950	2100	
宽 W	640	700	700	850	850	950	950	950	1320	1320	1320	
高 H	820	1180	1180	1300	1300	1600	1600	1600	1570	1570	1700	

组合式螺杆压缩机 (一体机) Combined screw air compressor series (integrated unit)

CHINA
GERMANY DENAIR



组合式螺杆空气压缩机

组合式螺杆空气压缩机是将螺杆压缩机，冷冻干燥机、精密过滤器、储气罐等部件集成于一体，用户安装方便，使用简单，移动灵活。

空气经集成系统后，空气质量明显优化，可满足各企业的工艺过程需要。美丽的外形、可靠的性能，经济性优越，是我公司出口的重要系列之一。

Combined screw air compressor series

The combined screw air compressor integrates the parts including screw compressor, air dryer, high efficiency air filter and air tank, making it convenient for the user to install, use and move.

After the air pass the integrated system, the quality of the air is made largely better to satisfy the process requirements of various companies.

It is of beautiful appearance, stable performance and economy. It is one of the important series exported by our company.

机器型号 Model	DNA-10A	DNA-15A	DNA-20A	DNA-25A	DNA-30A	DNA-30W	DNA-50A	DNA-50W
冷却方式 Type of cooling	A-Air cooling 风冷				W-Water cooling 水冷			
容积流量/压力 Air delivery/Working pressure	1.1/7	1.7/7	2.4/7	3.1/7	3.8/7	3.8/7	6.4/7	6.4/7
压缩机功率 Motor power	1.0/8	1.6/8	2.2/8	2.9/8	3.5/8	3.5/8	5.9/8	5.9/8
转速 Rotation speed	0.8/10	1.4/10	2.1/10	2.7/10	3.2/10	3.2/10	5.5/10	5.5/10
电压/频率 Voltage	0.6/13	1.2/13	1.7/13	2.2/13	2.7/13	2.7/13	4.6/13	4.6/13
启动方式 Starting method	Y-Δ				Y-Δ			
噪音 Noise	72 ± 5, 按国标GB/T4980-2003测量 72 ± 5, measured according to the international GB/T4980-2003 standard							
排气含油量 Oil content of discharged air	< 3ppm							
出口空气温度 Outlet air temperature	环境温度+15°C Ambient temperature + 15							
冷却风量 Cooling air volume	80	80	100	145	145		255	
冷却水量 Cooling water volume	L/min		16		21		26	
接管口径 Pipe connection diameter	3/4"	1"	1"	1"	1"	1"	1 1/4"	1 1/4"
储气筒容积 Volume of air tank	0.5	0.5	0.5	0.6	0.6	0.6	0.8	0.8