

**WELCOME TO
PRESENTATION ON
BUILDING MATERIALS &
CONSTRUCTION
CHEMICALS of Bostik
India Pvt Ltd**

CONSTRUCTION RANGE

- SEALANTS
- WATERPROOFING
- REPAIRS
- FLOORING
- CONSTRUCTION ADHESIVES
- ADMIXTURES

SEALANTS

- POLYURETHANES
 - SEAL N FLEX
- FIRE RATED PU
 - FIREBAN
- SILICONES
 - ALL PURPOSE / GLAZING
- ACRYLIC
 - FILL A GAP/C SEAL
- CO POLYMER
 - CLEAR SEAL

SEAL N FLEX



- **EXPANSION & CONST JOINTS IN BUILDINGS, ROADS & RUNWAYS**
- **ONE COMPONENT NO MIXING REQUIRED**
- **MOVEMENT \pm 25%**
- **ELONGATION AT BREAK $>$ 900 %**
- **HIGHLY DURABLE**
- **PAINABLE**
- **AVAILBLE AS NORMAL/ FAST CURE**
- **RANGE OF COLOURS**

ALL PURPOSE/ GLAZING SILICONE

- G P SEALANT
- FLEXIBLE
- INT & EXT USE
- GOOD ADHESION
- UV RESISTANT
- WATERPROOF
- AVAILABE IN TRANS,
WHITE, BLACK &
GREY COLOURS



FILL A GAP / COLOUR SEAL



- SEALING CRACKS
- SEALING WINDOW & DOOR FRAMES
- GAPS IN CERAMIC TILES
- ANTI FUNGAL
- INT & EXT USE
- EXCELLENT BOND
- PAINTABLE
- AVAILABLE IN COLOURS

CLEAR SEAL



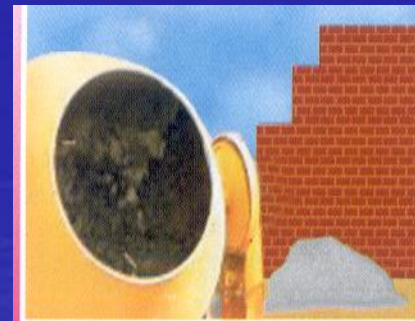
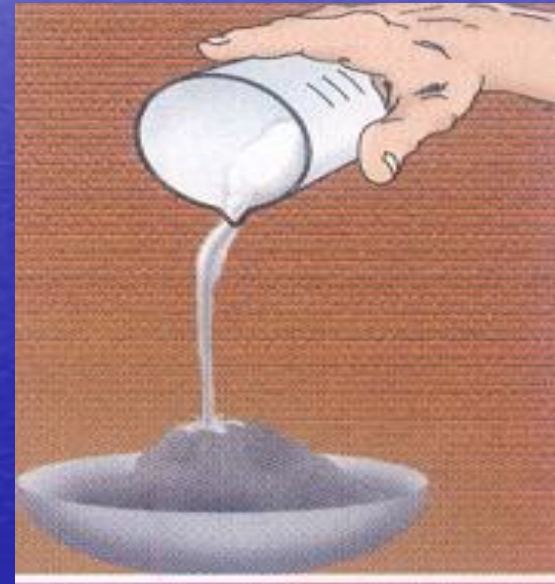
- **MULTI PURPOSE COPOLYMER SEALANT**
- **CLEAR TRANSPARENT SEAL**
- **INTERIOR / EXTERIOR USE**
- **FLEXIBLE & DURABLE**
- **NON SAGGING**
- **HIGH ADHESIVE STRENGTH**

WATERPROOFING

- **ELASTOMERIC**
 - **ACRYLIC**
 - **SLURRY**
 - **FLEXIBLE**
 - **ADMIXTURE**
 - **WATER BARRIER**
 - **INTEGRAL W/P**
 - **WATER REPELLENT**
 - **TORCH ON MEMBRANES**
- **ELASTOCOAT**
 - **EXTERIORCOAT**
 - **BOSCO SLURRY**
 - **BOSCOELASTIC**
 - **HYDRO 476 HS**
 - **MOISTURE SEAL**
 - **BOSTIK ONE/ IWP/LW**
 - **MAGIC REPELLENT**
 - **TOM 3MM / 4MM APP**

INTEGRAL WATERPROOFERS & ADMIXTURES

- BOSTIK IWP
- BOSTIK ONE
- BOSTIK LW
- BOSTIK TWO IN ONE
- BOSCOMATE PLASTER



ELASTO / EXTERIOR COAT

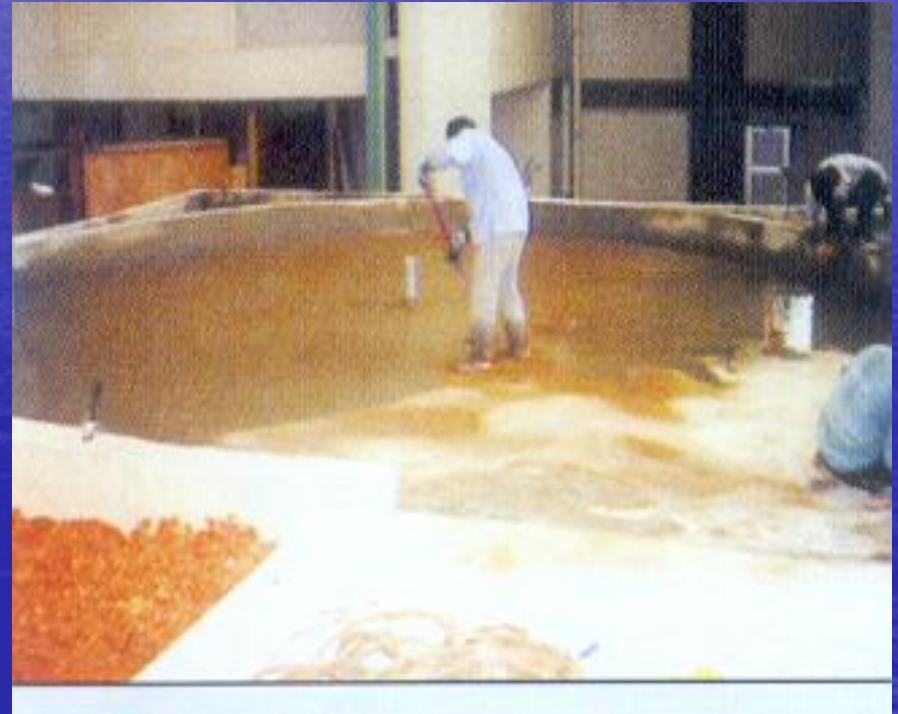


- ACRYLIC BASED
- ANTI FUNGAL
- LOW DIRT PICK UP
- SEAMLESS COAT
- UV RESISTANT
- LOW WATER ABSORPTION
- TINTED TO DESIRED SHADES



BOSCO SLURRY / ELASTIC

- CEMENT BASED
- TWO COMPONENT
- CRACK BRIDGING
- APPLICATION -BOTH POSTIVE & NEGATIVE SIDE
- HARD & ABRASION RESISTANT
- PAINTABLE



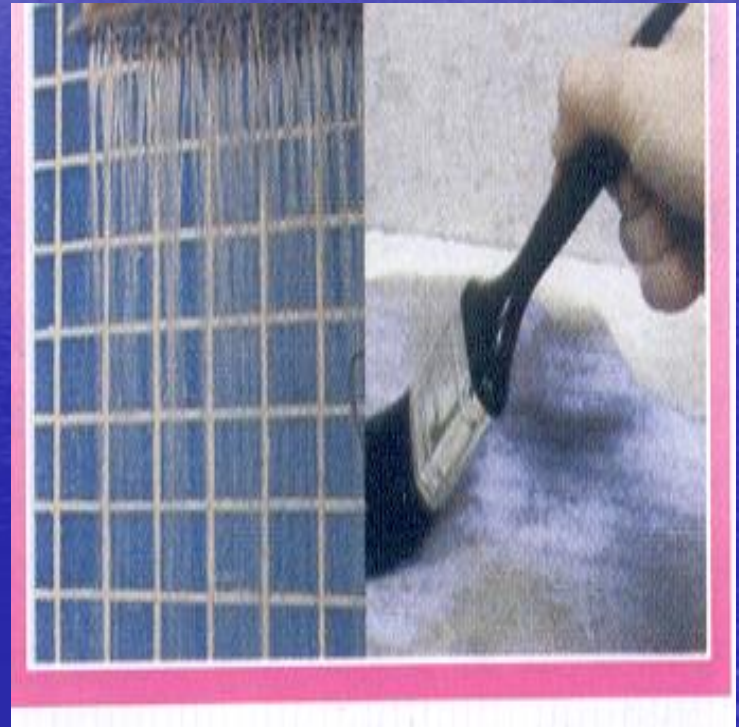
MOISTURE SEAL

- EPOXY WATER VAPOUR BARRIER
- PREVENT WATER SEEPAGE & PERMEATION FROM
 - ✓ FLOORS & WALLS
 - ✓ WATER TANKS & RESERVOIRS
- CAN BE APPLIED ON DAMP SURFACE
- WITHSTANDS HIGH LEVEL OF HYDROSTATIC PRESSURE



HYDROMNT 476 HS / BOSCOCRETE

- ACRYLIC LATEX
- WATERPROOFING CUM BONDING AGENT
- NO DEGRADITION
- GOOD BONDING
- INTERNAL & EXTERNAL USE

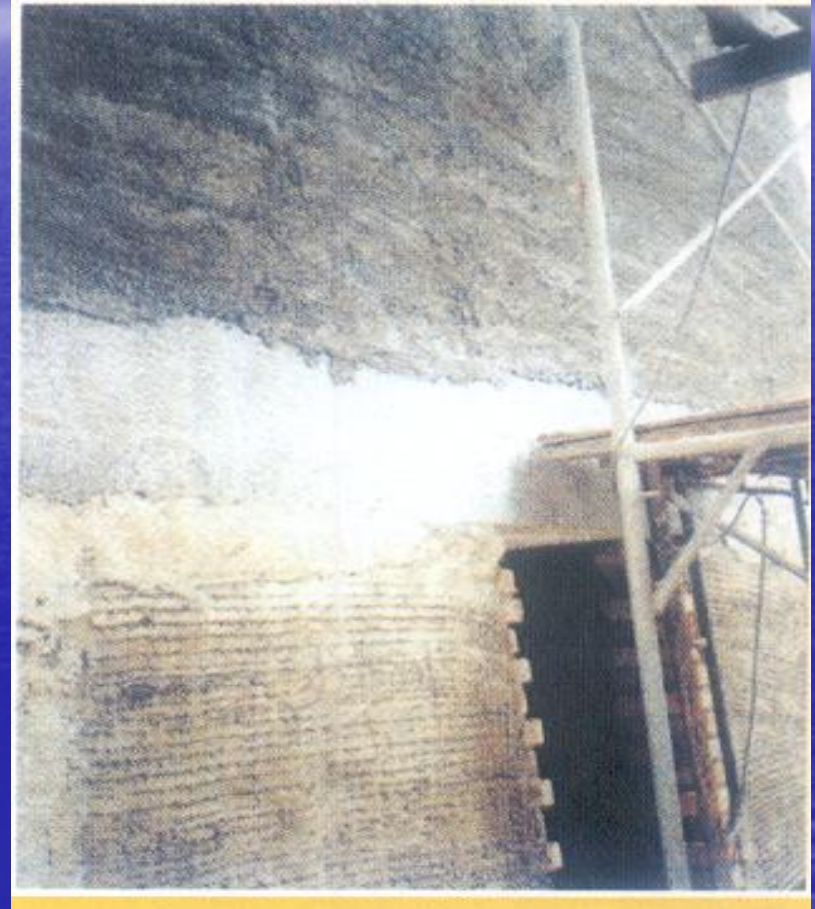


REPAIRS

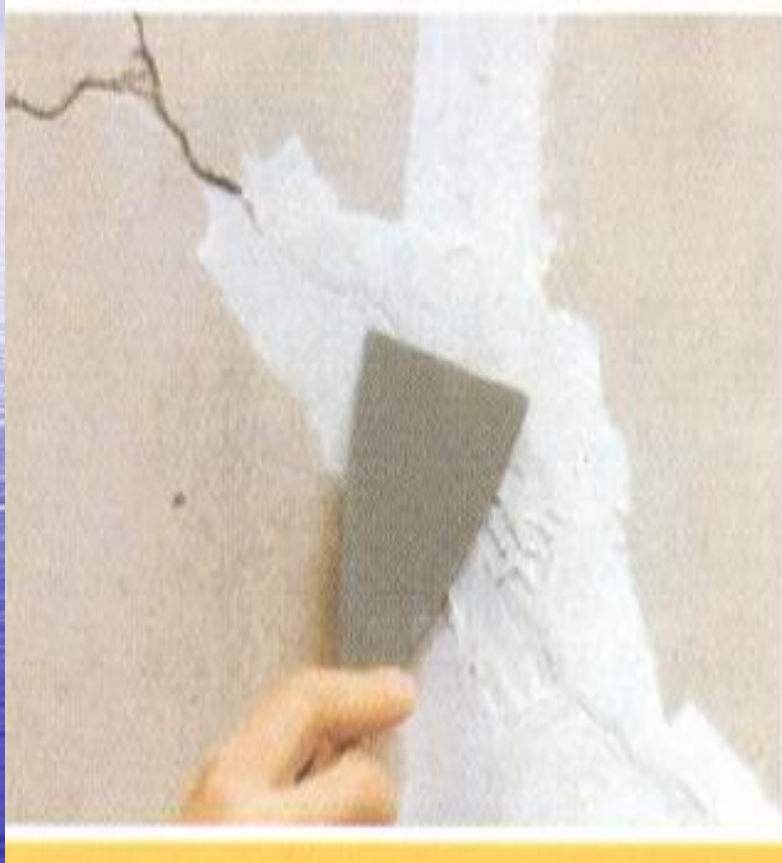
- SBR LATEX
 - CRACK FILLER
 - EPOXY BONDING
 - EPOXY ADHESIVE
 - WATER PLUG
 - EPOXY GROUT
 - FAST SETTING CONCRETE
- BOSCOCEM 475
 - CRACK FILL
 - BOSTIK EP BOND
 - TITAN BOND PLUS
 - PLUG LEAK
 - TECHFLOW EPOXY
 - PATCHFIX CONCRETE

BOSCOCEM 475

- **SBR BASED MORTAR MODIFYING & BONDING AGENT**
- **BONDING OLD TO NEW CONCRETE**
- **IMPROVES TENSILE & FLEXURAL PROPERTIES OF REPAIR MORTARS**
- **BETTER ABRASION & CHEMICAL RESISTANCE OF CEMENT SCREEDS**



BOSTIK CRACK FILL



- POLYMER MODIFIED CEMENTITIOUS CRACK SEALER
- ONE COMPONENT
- NON SHRINK
- GOOD ADHESION
- SMOOTH FINISH

BOSTIK PLUG LEAK

- **FAST SETTING WATER PLUG**
- **IDEAL FOR PLUGGING LEAKS IN**
 - ✓ **BASEMENTS & PITS**
 - ✓ **RCC WATER TANKS**
 - ✓ **CONCRETE PIPES**
 - ✓ **SWEAGE TANKS**
 - ✓ **WATER RETAINING STRUCTURES**
- **HIGH EARLY COMPRESSIVE STRENGTH**



PATCHFIX CONCRETE



- **REPAIRS OF ROADS, RUNWAYS & CONCRETE PAVEMENTS**
- **SINGLE COMPONENT**
- **EASY TO MIX AND APPLY**
- **HIGH EARLY STRENGTH**
- **FAST SETTING**
- **SHRINKAGE COMPENSATED**
- **RAPID STRENGTH GAIN**
- **ACCEPTS VEHICULAR TRAFFIC IN 2 HRS**
- **INTERNAL / EXTERNAL USE**

FLOORING

- **CEMENTITIOUS
UNDERLAY
OVERLAY
LIGHTWEIGHT
BULKOUT**

- **ULTRALEVEL SL**
- **ULTRALEVEL HD**
- **ULTRALEVEL LW**
- **ULTRALEVEL BO**

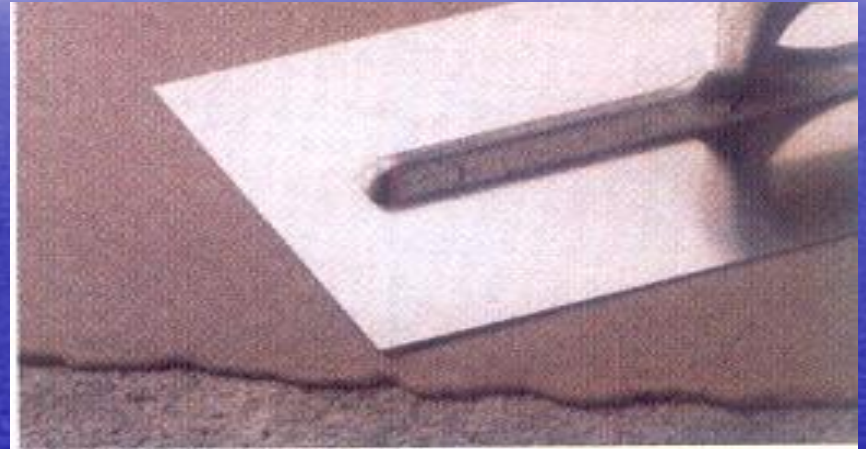
- **EPOXY
SOLVENT BASED
SOLVENT FREE
SELFLEVEL
UNDERLAY**

- **EPOXYCOTE SB**
- **EPOXYCOTE SF**
- **ULTRALEVEL ESL**
- **ULTRALEVEL EUL**

CEMENTITIOUS FLOORING

ULTRALEVEL SL / HD

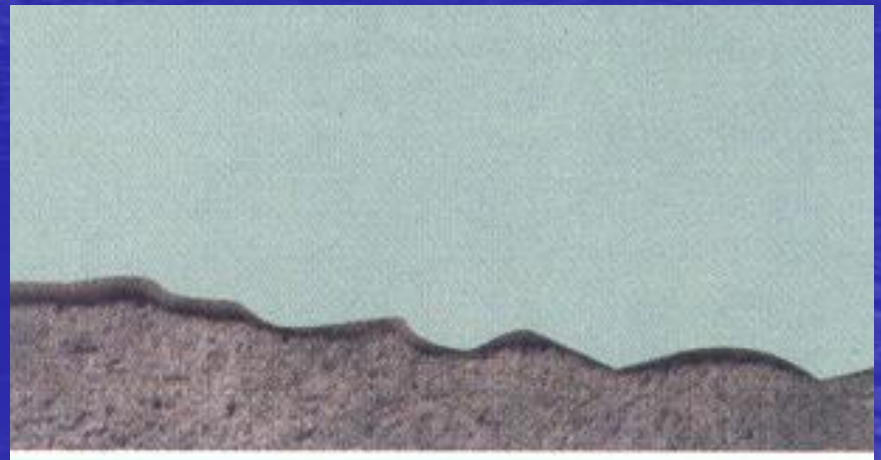
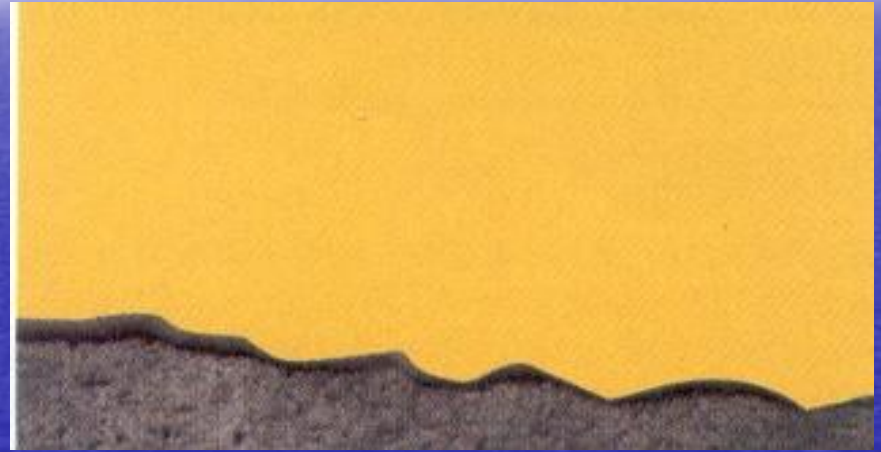
- POLYMER MODIFIED
- SINGLE COMPONENT
- READY TO USE
- QUICK APPLICATION
- RAPID CURING
- SELF LEVELLING
- UNDERLAY/OVERLAY



EPOXY FLOORING

EPOXYCOTE SF / SB / ESL

- IDEAL FOR
- ✓ CLEAN ROOMS
- ✓ HOSPITALS
- ✓ INDUSTRIAL FLOORS
- ✓ PHARMA UNITS
- CHEMICAL RESISTANT
- ABRASION RESISTANT
- RANGE OF COLOURS

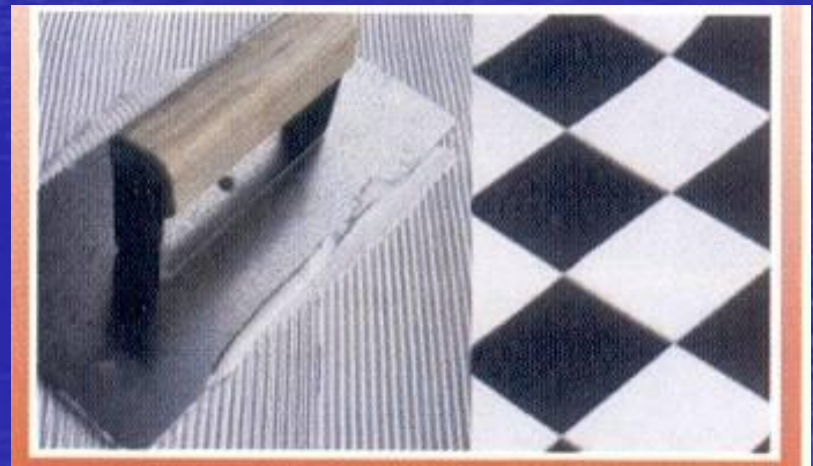


CONSTRUCTION ADHESIVES

- CERAMIC TILE ADHESIVE ➤ FIXALL
- CERAMIC TILE ADHESIVE ➤ SUPERFIXALL
- TILE JOINT FILLER ➤ TILE GROUT
- GENERAL PURPOSE ADHESIVE ➤ NO MORE NAILS
- WOOD FLOOR ADHESIVE ➤ PU 9069

FIXALL / SUPER FIXALL

- HIGH STRENGTH BOND
- FOR WALLS & FLOORS
- TILE ON TILE APPLICATION
- NO ODOUR
- ECONOMICAL
- NON TOXIC
- EASY TO SPREAD
- THICK & THIN BED APPLICATION



TILE GROUT

- CEMENTITIOUS TILE JOINT FILLER
- EASY TO APPLY
- GOOD ADHESION
- RESISTANT TO SHRINKAGE & CRACKING
- AVAILABLE IN COLOURS



NO MORE NAILS



- **NAIL FREE GENERAL PURPOSE CONST ADHESIVE**
HIGH BOND STRENGTH
EXEC GREEN STRENGTH
CHEMICAL RESISTANT
SLUMP RESISTANT
GOOD TEMP RESISTANCE
GOOD ADHESION & SEALING PROPERTIES
- **BONDS VARIETY OF CONST & BUILDING MATERIALS**

WOOD FLOOR ADHESIVE PU 9069

- **SINGLE COMPONENT**
- **READY TO USE**
- **BRUSH / TROWEL APPLICATION**
- **HIGH BOND STRENGTH**
- **GOOD HEAT RESISTANCE**

