

	1.
	2.
	3.
	4.
	5.
	1.
	2.
	3.
	1

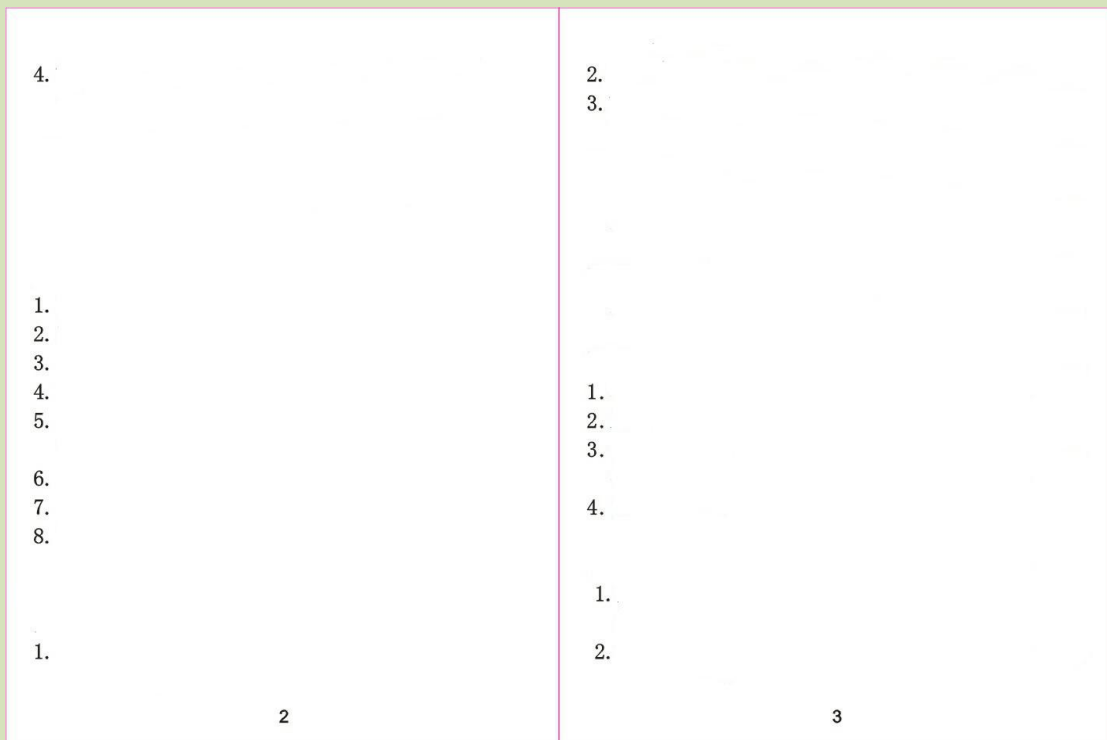
**DIY Installation**

**Before installation:**

1. Check all the accessories and the four remote controllers.
2. Check whether the lock fits in with the structure of the door.
3. Check the conditions of the door, such as the materials, shape and surface.
4. Measure the installation place.
5. Clean up the installation place.

**Installation/Remove Methods:**

1. Install the lock according to the materials of the door, which mainly includes wooden door and iron door.
2. Installation on Wooden Door: Tear off the double-sided tape on both fixation board and lockpin. Chose a proper place and paste the lock on the door. Mark 4-5 hole places on the fixation board with a pencil. Fasten the fixation board with wood bolts and install the lock on it. And then fasten the lockpin (corresponding to the lock) on the door frame with wood bolts. Check the flexibility of the lockpin and tighten the bolts up after corresponding adjustment.
3. Installation on Iron Door: It's similar to that of wooden door. The main difference is to use  $\Phi 4 \times 10$  stainless steel rivets instead of wood bolts. Mark the door and make holes with a  $\Phi 4$  drill. Fix rivets at hole places with a rivet gun.



4. Remove Method: For a wooden door, uninstall the wood bolts with a screwdriver. For an iron door, uninstall the rivet by using an electric hand drill or a file.

**Notice: DIY installation isn't recommended because it cannot completely ensure the installation quality. And therefore, for all of our products, home installation services should be provided by *professionals*.**

**Setting Steps of Remote Controllers and Door Lock:**

1. Open the battery cover.
2. There is a Setting key in the middle of the left battery jar.
3. Press the Setting key for about 2 seconds.
4. The LED lamp will light up and sound "beep, beep".
5. Press every remote controller for a second until it sounds a "beep".
6. Press the Setting key for a second until it sounds "beep, beep".
7. Test whether each remote controller can work normally after setting.
8. If one of the remote controllers doesn't work, please follow the above steps to reset it.

**Resetting Methods of Remote Controllers and Door Lock:**

1. If you lose a remote controller carelessly, please reset other remote controllers.
2. Resetting them by following the above steps.
3. The lost controller will be invalid after resetting them. You can use the new controller at ease.

**Notice:** Don't press the Resetting key at will unless you lose the remote controller or buy a new one because all the stored data will be deleted.

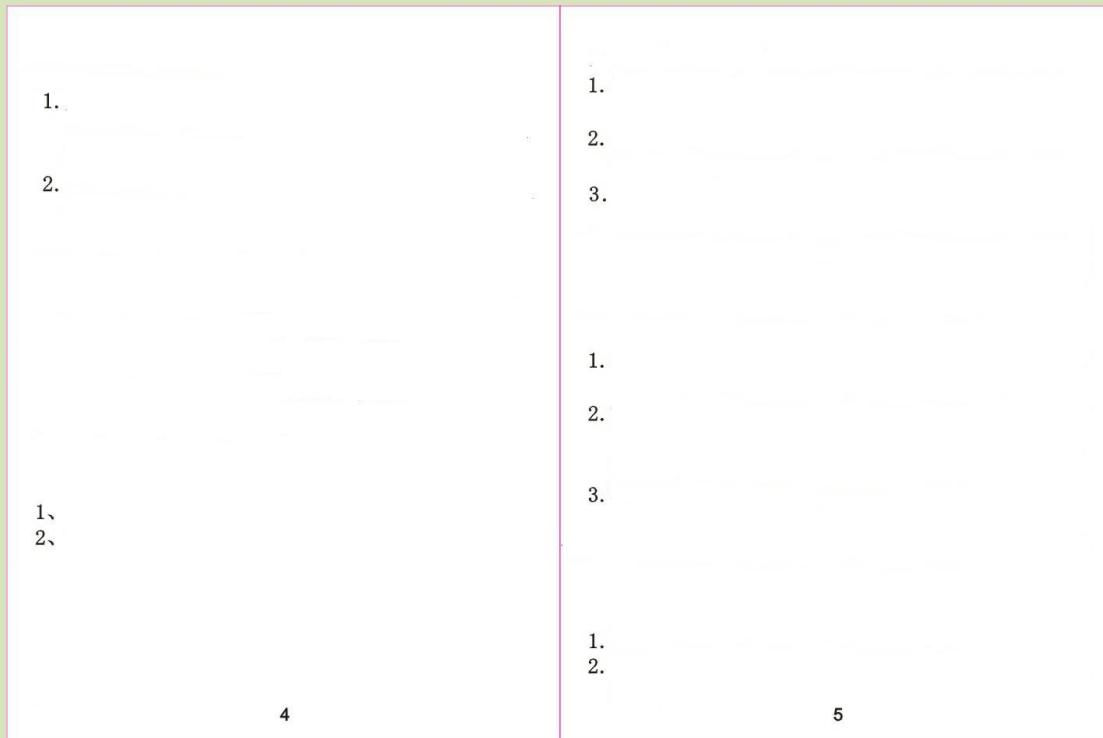
**Inspection and Adjustment After Installation:**

After installation, please make sure that the remote controller can work well when there is a person indoors (please check it indoors and outdoors). Check and adjust the following:

1. The transmitting distance of the remote controller's signal.
2. The best place for the remote controller to receive and send electric waves.
3. Adjust the antenna direction (it's the most proper to let the antenna and the lock form an angle of 90 degrees, but it can differ as the case may be).
4. Check whether the signal voice is normal when you unlock or lock the door lock.

**The Signal Voice of Unlocking/Locking Door Lock:**

1. It means the door lock is locked if you hear a "beep" after pressing the "Lock" key.
2. It means the door lock is unlocked if you hear "beep, beep, beep" after pressing the "Unlock" key.



**Reasons for Automatic Unlocking:**

1. In case of unqualified installation or unsuccessful operation, the lock will unlock automatically with warning signals. You should check whether the key cylinder can work well at this time. Please contact us if you fail to solve the problem by yourself.
2. The battery has been lower than the lowest working level set in the lock. The user is required to change the batteries immediately to prevent the lower security due to locking/unlocking automatically.

**Manual Emergency Unlocking Design:**

The door can be unlocked manually. Thus, the lock can be used for security even in an emergency such as fire.

**Tactile lock and unlock Design:**

There are two touching positions is designed on the lock. It can be locked and unlocked by touching the touched position without remotes to open or lock the door, when you are indoors.

**Power Supply Choice:**

1. 2 AA alkaline batteries (3V).
2. DC5V/1000mA.

The two supply powers can supply electricity at the same time or individually. When both of the two AA alkaline batteries and DC5V/1000mA exist concurrently, the lock will choose DC5V/1000mA automatically and cut off the two AA alkaline batteries. So, the normal work can be ensured with its never cut-off or power-off design.

**Battery Replacement Reminder:**

1. When the electrical capacity of the batteries is insufficient, the lock will send acousto-optic alarm signals to remind the user to replace the batteries, which can still be used for about one month.
2. If the electrical capacity of the batteries continues lowering, the door lock will send acousto-optic alarm signals and the unlocking function will be automatically stopped so as to remind the user to replace the batteries immediately.

3. If the electrical capacity of the batteries is lower than the lowest working electrical capacity set in the lock, the lock will unlock automatically. This function is designed for the users who have to go out for a long period and cannot unlock in a long distance because the batteries are dead. Please change the batteries or connect AC supply as standby power to avoid the lower security caused by automatic unlocking.

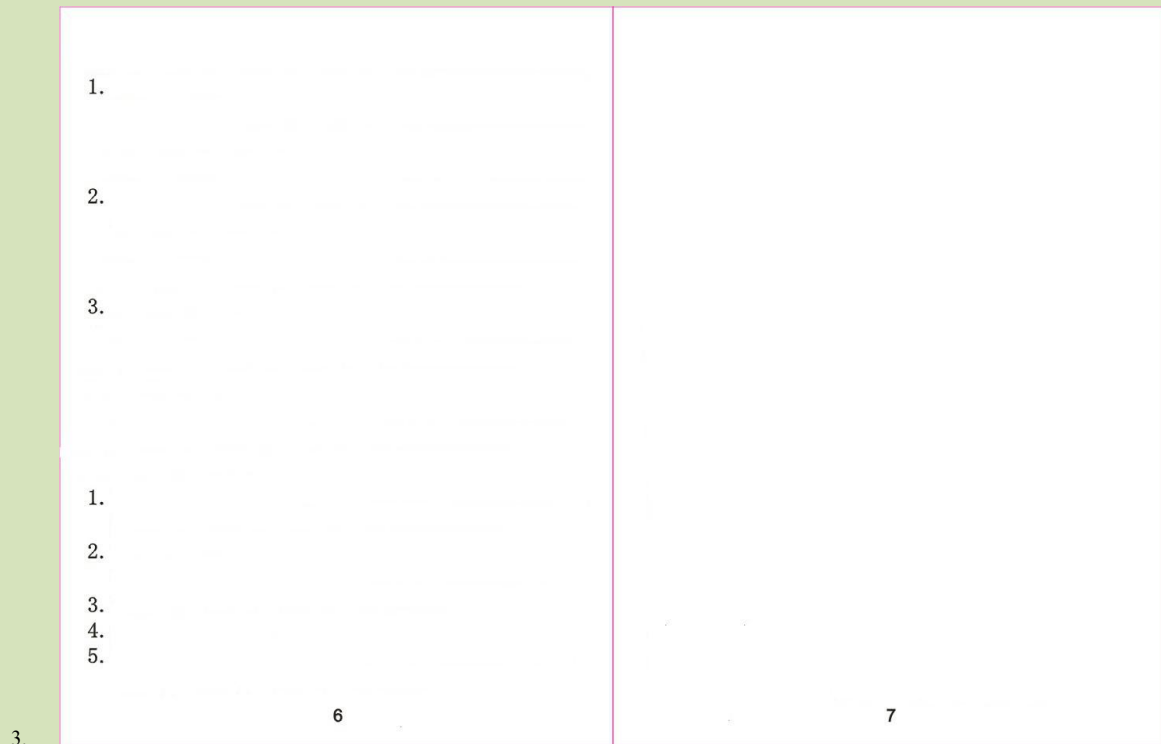
**Lock Battery Replacement:**

1. You should immediately change the batteries when the LED lamp starts to shine or the locking/unlocking voice becomes weaker.
2. Open the battery cover as directed by the arrow, and insert two AA batteries (please insert new batteries in 10 seconds to protect the electronic circuit).
3. Test the performance of unlocking and locking the door to make sure the change is successful.

**Notice:** Please use alkaline battery. Magnetic battery or rechargeable battery will result in a failure.

**Inspection Steps After Battery Replacement:**

1. Check whether the door lock is controlled by the remote controller.
2. Check whether the LED lamp and its signal have resumed to the normal working state under the normal voltage.



**Remote Controller Battery Replacement:**

1. Where the electrical capacity of the battery in a remote controller is sufficient, if the remote controller is used, its LED lamp is red. Where the electrical capacity of the battery in a remote controller is insufficient, if the remote controller is used, its LED lamp weakens and control speed slows down. Please timely replace the batteries for the remote controller.
2. Insert and turn the tip of a thin tool into the passage of the side to open the cover and replace the CR2016 battery. Make sure the polarity of the battery is correct. The installation shall be in order of front cover, rubber pad, electronic circuit board, back cover.
3. Test whether the remote controller works normally after battery replacement.

**After-Sale Services:**

In case of right installation and usage as directed by the Operation Manual, we will provide free after-sale services during the Warranty Period.

Warranty Period: One year from the purchase day. If there is no specific purchase date, the production date will be deemed as the purchase date.

But the following services are not free (even during the Warranty Period):

1. Damage caused by force majeure, including unsteady power supply.
2. Damage caused by improper usage, such as dismantling, resetting.
3. Replacement of spare parts.
4. Damage caused by the environmental conditions.
5. Where you lose the remote controller or more remote controllers are needed, please contact after-sale service at 4000139882.

**Product Parameter****Host Parameter**

Size (mm): 96\*155\*36

Weight (g): 620

Usage Distance: a remote controller will be 5 m inside, 0.5 to 1 m outside **even if obstructed**.

Method: ASK SINGLE COVERSION

[Receiving Frequency: 433MHz](#)

Battery Type and Number: 2 AA alkaline batteries (3V)

USB AC Adapter:

INPUT: AC100-240V 50/60Hz

OUTPUT: DC5V/1000mA

**Battery Life: six months if 20 times per day**

**Working Temperature: -20℃~80℃without ice or frost**

**Working Moisture: 5%~60% without frost**

Remote controllers to be installed: 16 at most

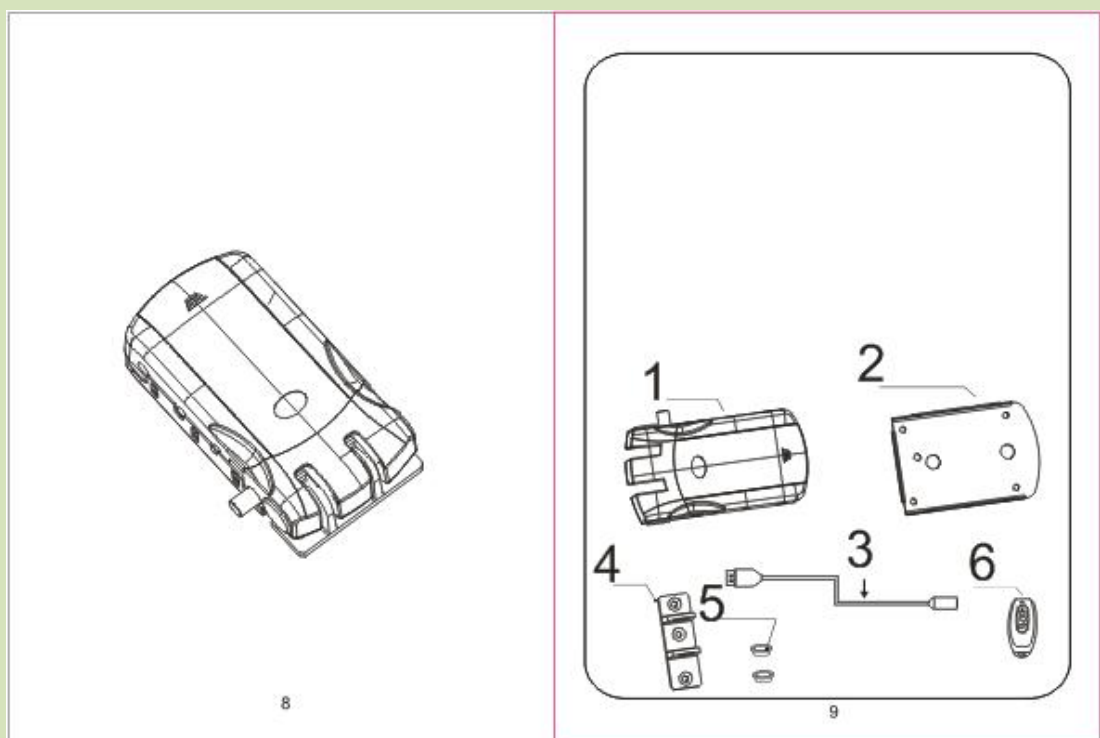
**Remote Controller Parameter**

Number: 4

Method: ASK SINGLE COVERSION

[Receiving Frequency: 433MHz](#)

Battery Type and Number: button batteries CR2016 (3V)



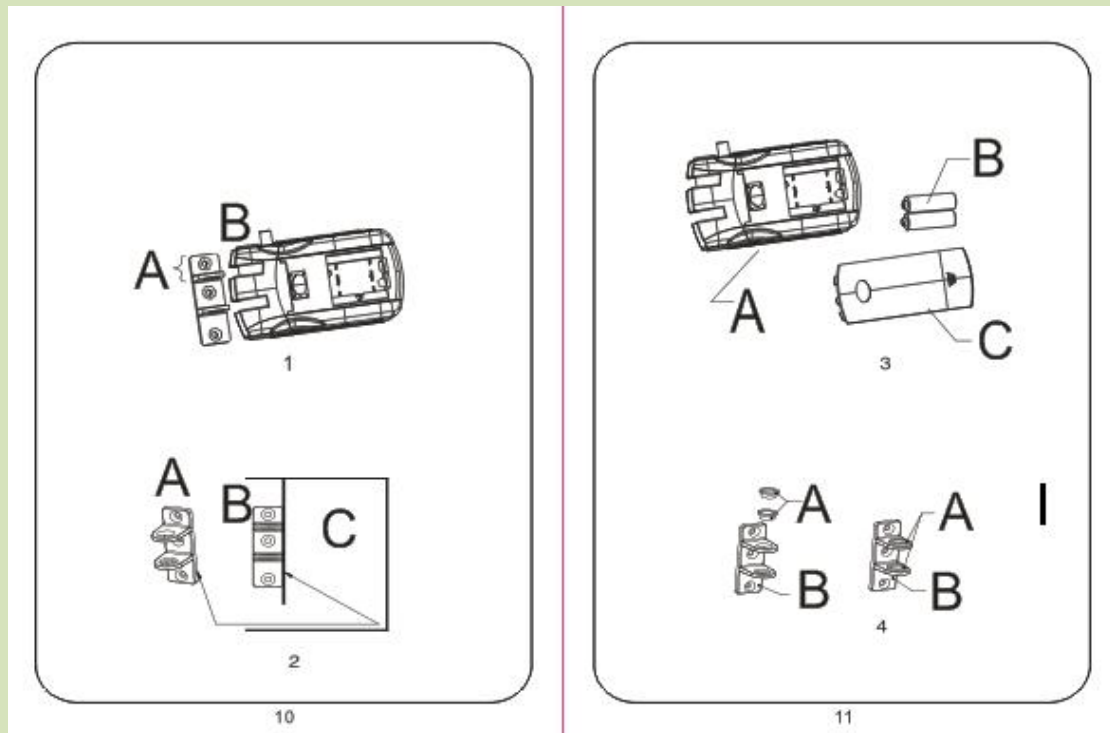
#### Installation Instructions

*This product shall not be installed under the long-period high temperature ( $>50\text{ }^{\circ}\text{C}$ ), low temperature ( $<-20\text{ }^{\circ}\text{C}$ ) or humid environment.* Otherwise, the electronic components in the lock may be broken down or damaged. We may not be entitled to compensate for the corresponding damages not according to the warranty clauses. However, we can provide free maintenance services.

#### Lock Components

Firstly, let's look at the invisible remote controller lock and its spare parts (shown in the below diagram) in order of remote

control lock, fixation board, lock catch, locating ring of lock catch, remote controller, connecting line.



**Step 1:**

Make sure the right direction and place to install the lock catch:

We should make sure the direction of lock catch and the lock with a word of DC, according to the specific conditions of the door. It should be sure that the shortest end of the lock catch is consistent with the direction of the lock with DC hole in any installed case. (Diagram 1).

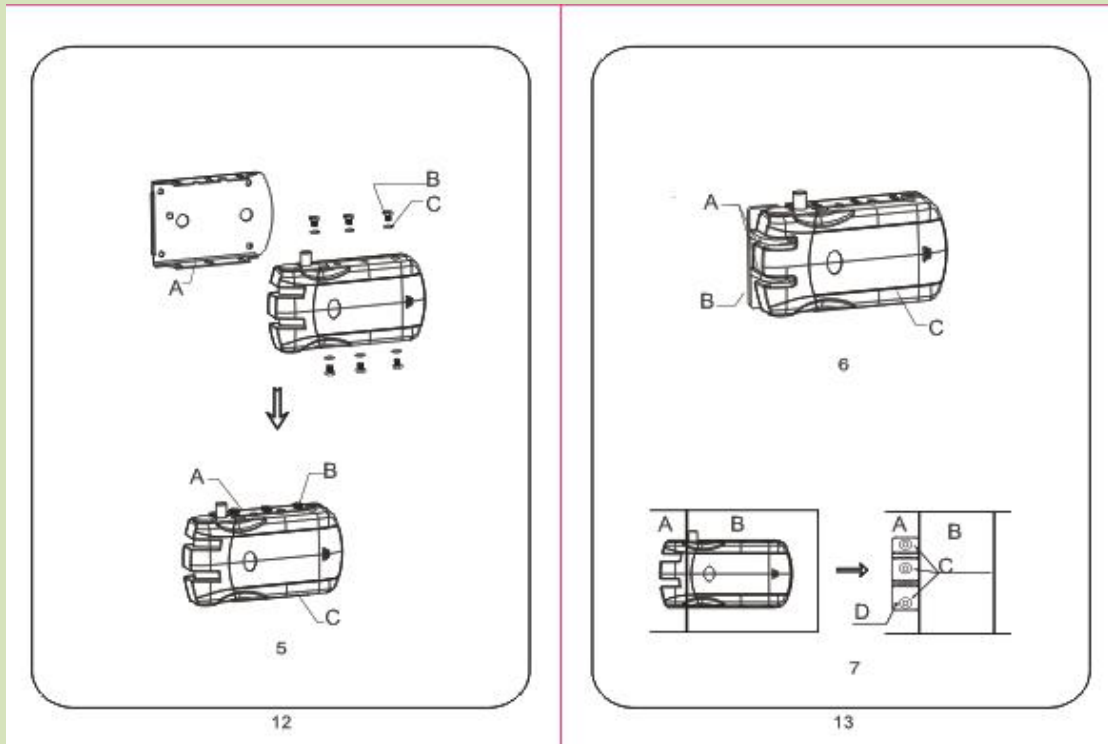
Make sure the close-door-side of the lock catch is aligned at the door frame (Diagram 2).

**Step 2:**

Install the lock catch: Firstly, insert the batteries into the host (Diagram 3).

Install the locating rings of the lock catch into the lock catches (Diagram 4).

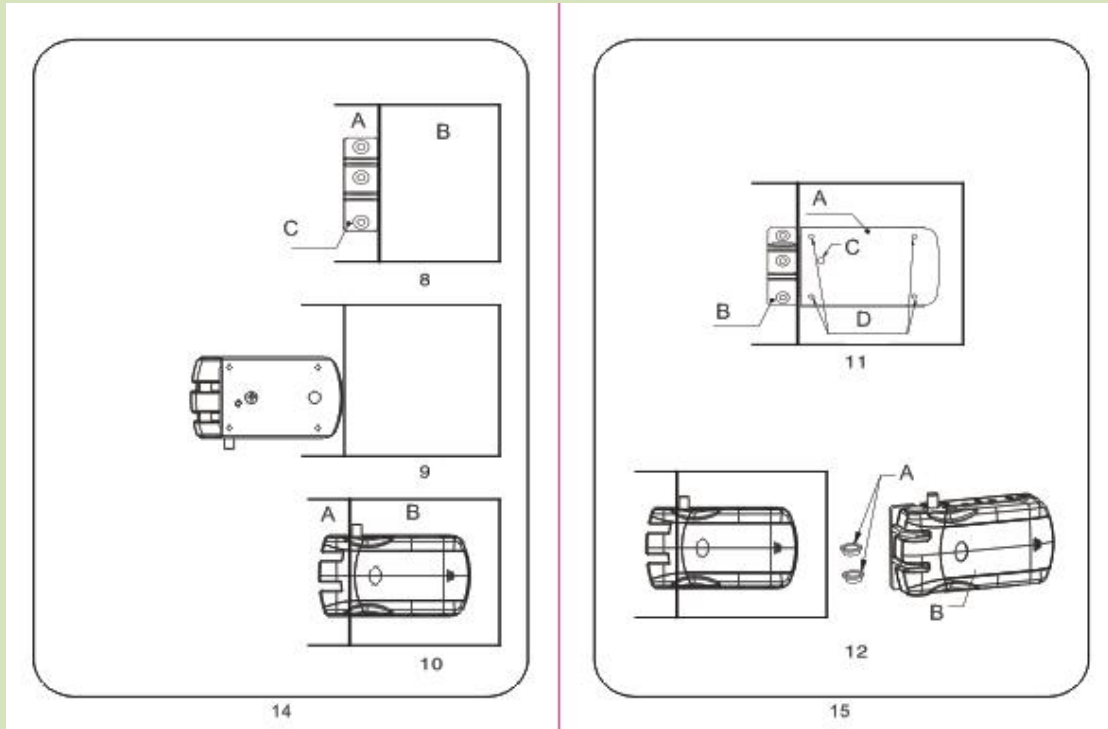




Assemble the remote control lock and fixation board into one with 4 M5×6 hexagon bolts (Diagram 5).

After completing the assembly thereof, assemble the lock catch on which the locating rings have been installed and remote control lock into one (Diagram 6) so as to define where the lock catch is fixed. Tear off the double-sided tape on the back of the lock catch, and then move and fix it to the door frame.

Take off the remote control lock after fixing the lock catch (Diagram 7). Firstly, drill the place corresponding to the middle hole of the lock catch with a hand-operated electric drill and  $\Phi 4.2$  drill bit and fasten it with the rivet gun and  $\Phi 4 \times 6$  stainless steel rivets. Immediately after that, drill the places corresponding to the other two holes, and fasten them with rivets in the same manner.



### Step 3

Fix the lock catch (Diagram 8).

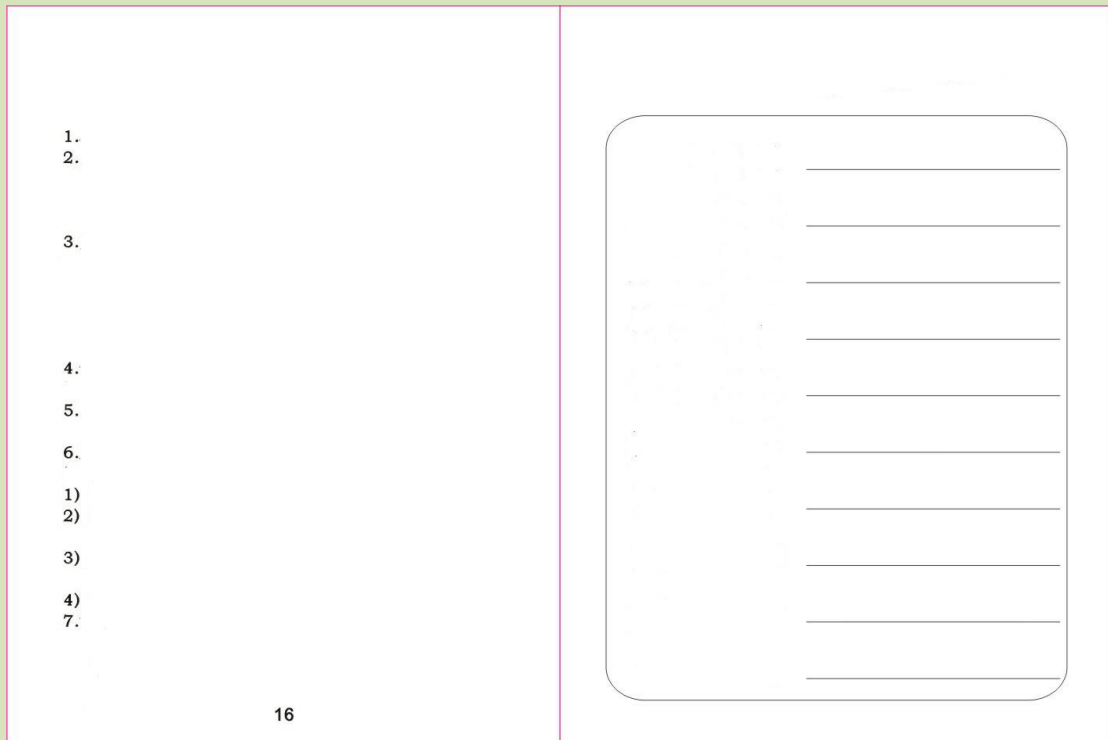
Connect the lock and lock catch (Diagram 9).

Tear off the double-sided tape on the back of the fixation board, and move and paste it to the back of the door tightly (Diagram 10).

Take the 4 bolts that are used to connect the remote control lock and the fixation board off to remove the lock.

Drill the respective places corresponding to the four fixed holes and the emergency hole in the diagonal manner with a hand-operated drill, and then fasten them with  $\Phi 4 \times 8$  rivets (Diagram 11).

Reconnect the remote control lock and the fixation board, fasten the 6 M5×6 hexagon bolts and take off the locating rings (Diagram 11). The whole installation process is finished.



**Warranty Card**

**After-sale Services and Warranty**

1. We shall provide free maintenance services for the damage caused by product quality within one year from the purchase day.
2. Please keep the Warranty Card well. We won't re-issue it even if you lose it.
3. Please install and use the product in the right way as required by the Operation Manual.
4. The following services are not free (even during the Warranty Period):
  - 1) Damage caused by force majeure, including unsteady power supply.
  - 2) Damage caused by improper usage, such as dismantling, resetting.
  - 3) Replacement of spare parts, such as batteries, door bolt.
  - 4) Damage caused by the environment conditions.
5. If you have any other problem, please contact after-sale service.
6. Should you have any question, please do not hesitate to contact the local distributor.

Manufacturer: Shenzhen Huafu Intelligent Technology Co. Ltd.

**Information Registration**

Product Name

Model No.

Serial No.

Warranty Period

Name of the Selling Company

Address

Tel

Name of the Maintenance Company

Address

Tel