



MAKARI

DE SUISSE

MAKARI
A NEW
LIGHT
ON DARK
SKIN

PRODUCT
CATALOG

MAKARI

DE SUISSE

MAKARI PRODUCTS ARE DISTRIBUTED IN
MORE THAN 50 COUNTRIES AROUND THE WORLD



THANK YOU
TO OUR
CUSTOMERS
ALL OVER
THE WORLD

EDITORIAL

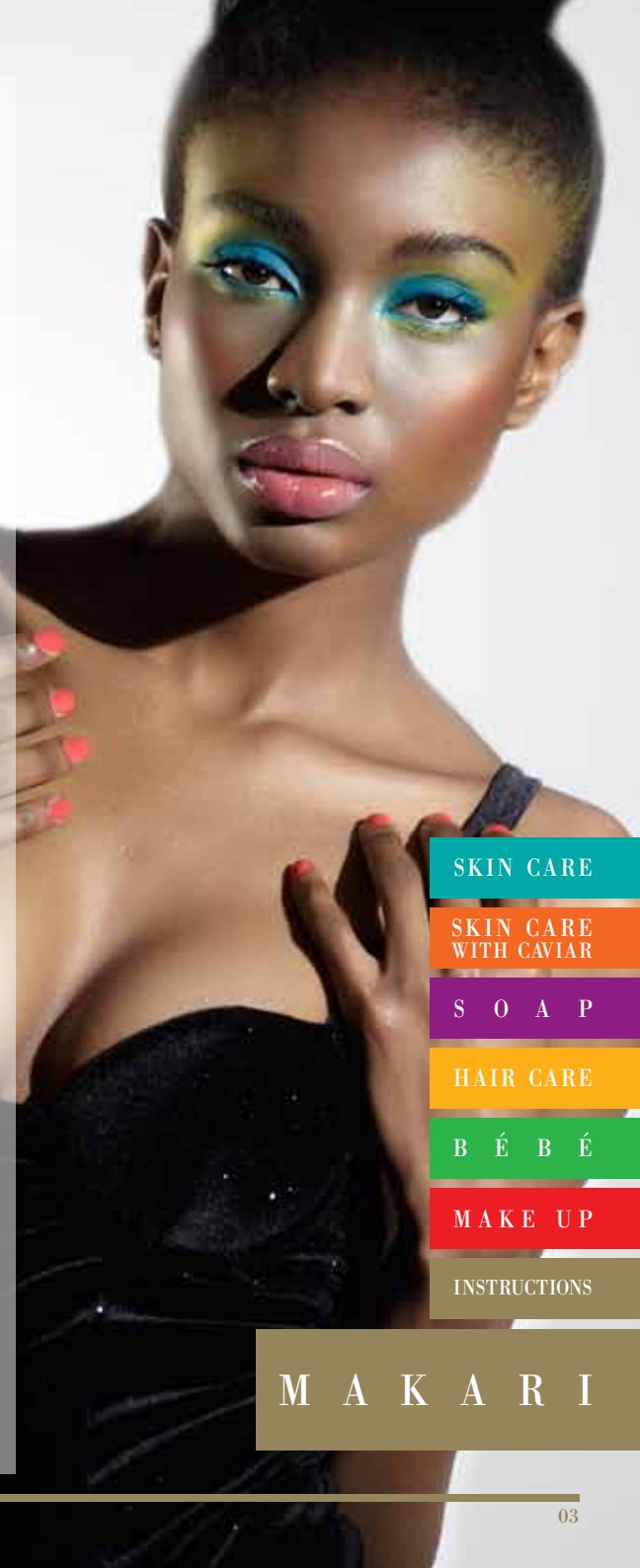
AUSTRIA, BELGIUM, BENIN, BRAZZAVILLE,
BURKINA FASO, CAMEROON, CANADA,
CARRIBEAN ISLANDS, CENTRAL AFRICAN
REP., CHINA, CONGO, CONGO KINSHASA,
DENMARK, DHABI, DUBAI, EQUATORIAL
GUINEA, FRANCE, GABON, GAMBIA,
GHANA, GUINEA, GERMANY, INDIA, IRELAND,
ITALY, IVORY COAST, JAMAICA,
KENYA, MALI, MAURITANIA, MORROCO,
NETHERLANDS, NICER, NIGERIA, OMAN,
REUNION, RWANDA, SENEGAL, SIERRA LEONE,
SPAIN, SWEDEN, SWITZERLAND,
TCHAD, TOGO, UGANDA, UNITED
KINGDOM, U.A.E. AND USA.

A NEW LIGHT ON DARK SKIN

Manufactured in Switzerland and prominent in Europe for nearly a decade, Makari de Suisse's treatments are designed to address the many skin concerns caused by the overproduction of melanin and hyper pigmentation experienced by men and women of darker complexions. The inspiring success stories from our customers keeps us firm in our commitment to avoid the use of harmful chemicals such as bleach or hydroquinone. Makari's products contain Végéclairine, a strong anti-oxidant which fights free radicals and combats the signs of aging. This high grade botanical complex diminishes the production of melanin naturally without harmful side effects.

Sold in over 50 countries worldwide, Makari de Suisse works to treat and help maintain a beautiful, clear complexion by offering a complete line of products with synergistically fulfill any beauty regimen helping to maintain healthy, beautiful skin.

MAKARI has revolutionized skin care for dark skins by combining traditional African, pan-African and Asian remedies with modern cosmetology. Makari's products contain natural botanic ingredients that have been used for hundreds of years to make dark skin beautiful.



SKIN CARE

SKIN CARE
WITH CAVIAR

S O A P

HAIR CARE

B É B É

MAKE UP

INSTRUCTIONS

MAKARI

A NEW
LIGHT
ON DARK
SKIN

SKIN CARE

BODY BEAUTIFYING MILK

SILKY SOFT TEXTURED BODY MILK RESTORES THE SKIN'S MOISTURE BALANCE AND GLOW WHILE CLEARING THE COMPLEXION WITH ITS HIGH CLARIFYING AGENT VÉGÉCLAIRINE TO CONTROL EXCESS SEBUM PRODUCTION. SPECIALLY FORMULATED TO REDUCE THE APPEARANCE OF PIGMENTED MARKS, SCARS, STRETCH MARKS AND OTHER SIGNS OF PREMATURE AGING.

BOTTLE 4.75 FL. OZ



SKIN REPAIRING AND CLARIFYING SERUM

HIGHLY CONCENTRATED WITH ESSENTIAL OILS AND VITAMINS TO ACT DEEP IN SKIN'S SURFACE TO RESTORE ESSENTIAL MOISTURE. THIS SERUM VISIBLY REDUCES THE APPEARANCE OF FINE LINES AND WRINKLES WHILE ITS HIGH CLARIFYING AGENT VÉGÉCLAIRINE HELPS CONTROL EXCESS SEBUM PRODUCTION PREVENTING BREAKOUTS AND DARK SPOTS WHILE REVEALING A MORE RADIANT COMPLEXION.

BOTTLE 1.35 FL. OZ



A NEW
LIGHT
ON DARK
SKIN

SKIN CARE

DAY TREATMENT CREAM

THIS HYDRATING FORMULA MOISTURIZES AND CONTROLS OIL AND SEBUM PRODUCTION WITHOUT DRYING WITH ITS HIGH CLARIFYING AGENT VÉGÉCLAIRINE. ITS ANTI-BACTERIAL, ELEMENTS SOFTEN THE LOOK OF FINE LINES AND WRINKLES.

JAR 1.85 FL. OZ

NIGHT TREATMENT CREAM

THIS ULTRA-HYDRATING FORMULA WORKS TO REGENERATE, REPAIR AND REPLENISH THE SKIN WHILE YOU SLEEP. THIS NON-DRYING FORMULA CONTAINS A HIGH CLARIFYING AGENT VÉGÉCLAIRINE TO SOFTEN THE LOOK OF FINE LINES AND WRINKLES, LIGHTEN DARK SPOTS AND EVEN THE COMPLEXION.

JAR 3.38 FL. OZ

CLEAR ACNYL CREAM

FORMULATED WITH A POWERFUL DEEP SKIN-PENETRATING BLEND OF ACNE FIGHTING INGREDIENTS TO CLEAR, TONE AND SMOOTH THE COMPLEXION. MINIMIZES THE APPEARANCE OF ACNE, BLACKHEADS, WHITEHEADS AND BLEMISHES.

JAR 3.38 FL. OZ



A NEW
LIGHT
ON DARK
SKIN

SKIN CARE

MAKE-UP REMOVER

A DEEP-CLEANSING BLEND OF BOTANICAL OILS AND LEMON EXTRACT THAT DISSOLVES MAKEUP AND IMPURITIES WHILE REFRESHING CONGESTED SKIN.

BOTTLE 4.75 FL. OZ.

PURIFYING CLEANSING TONIC

CLEANSING AND PURIFYING TONIC IS SPECIALLY FORMULATED WITH VÉCÉCLAIRINE TO DEEPLY AND GENTLY CLEANSE THE SKIN, REDUCE DISCOLORATION AND DARK SPOTS WHILE CONTROLLING EXCESS SEBUM PRODUCTION AND MINIMIZING PORES.

BOTTLES 4.75 FL. OZ.



DEEP CLEANSING LOTION

A SILKY SOFT TEXTURED DEEP-CLEANSING BLEND OF BOTANICAL OILS AND VITAMINS THAT RESTORE MOISTURE BALANCE TO THE SKIN. CLEANSING IMPURITIES, REFRESHING CONGESTED SKIN AND CONTROLLING EXCESS SEBUM PRODUCTION.

BOTTLE 4.75 FL. OZ.

A NEW
LIGHT
ON DARK
SKIN

SKIN CARE

CLARIFYING SCRUBBING CREAM

THIS CLARIFYING SCRUB EXFOLIATES AND SOFTENS THE ROUGHEST PARTS; HANDS, FEET, ELBOWS AND KNEES. IT REMOVES DEAD SKIN CELLS AND LEAVES THE SKIN REFRESHED, SOFT AND CLEAN.

TUBE 5.92 FL. OZ

CLARIFYING CREAM

THIS OIL-FREE CLARIFYING CREAM RESTORES THE ROUGHEST PARTS; HANDS, FEET, ELBOWS AND KNEES. REVIVES DEAD SKIN CELLS AND LEAVES SKIN NOURISHED, SOFT AND SUPPLE.

TUBE 2.54 FL. OZ



PEEL-OFF MASK

THIS MOISTER-RICH MASK CREATES DELIVERS POWERFUL DETOXIFYING, PURIFYING, AND BRIGHTENING RESULTS. PROVIDES THE SKIN WITH A CLEAR, MATTE AND HEALTHY APPEARANCE WHILE CLEANSING PORES OF IMPURITIES AND EXCESS SEBUM.

TUBE 5.92 FL. OZ



A NEW
LIGHT
ON DARK
SKIN

SKIN CARE

EYE CONTOUR GEL

ESPECIALLY FORMULATED FOR THE DELICATE EYE AREA, THIS UNIQUE GEL COOLS, MOISTURIZES, AND FIRMS THE EYE AREA WHILE SOOTHING EXPRESSION LINES.

JAR 1 OZ



ORALIGHT CLEAR COMPLEXION CAPS

HELPS PROMOTE A HEALTHIER COMPLEXION FROM WITHIN. THIS SUPPLEMENT FORMULA OF ESSENTIAL VITAMINS AND MINERALS HELP THE BODY CONTROL OIL PRODUCTION AND FIGHT FREE RADICALS IMPROVING SKIN TONE, AND RADIANCE.

90 CAPSULS



ANTI-U.V. CREAM

THIS SILKY CREAM HELPS IMPROVE SKIN CONDITIONS WHILE PROTECTING THE SKIN FROM HARMFUL UVA AND UVB RAYS. THIS LIGHTWEIGHT SUNSCREEN FORMULA SOOTHES, CLEARS, HYDRATES AND PROTECTS SKIN THROUGHOUT THE DAY LEAVING SKIN SMOOTH AND CLEAR.

BOTTLE 3.38 FL. OZ



A NEW
LIGHT
ON DARK
SKIN

SKIN CARE

BODY SILK BODY LOTION

THIS LIGHTWEIGHT LOTION IS SPECIALLY FORMULATED TO IMPROVE SKIN'S TEXTURE AND TONE RIVIVING DRY, THIRSTY DEHYDRATED SKIN.

BOTTLE 17 FL. OZ

ULTRA MOISTURIZING CREAM

THIS MOISTURIZER IS FAST ABSORBING, LEAVING THE SKIN SOFT, SUPPLE AND NURTURED ALL DAY.

TUBE 2.54 FL. OZ



A NEW
LIGHT
ON DARK
SKIN

SKIN CARE WITH CAVIAR

GLYCERIN WITH CAVIAR

THIS DEEP-CLEANSING BLEND OF CAVIAR EXTRACT AND ESSENTIAL VITAMINS REVIVES DEHYDRATED SKIN AND LIGHTENS COMPLEXION WHILE CLEANSING IMPURITIES AND REFRESHING CONGESTED SKIN. VÉGÉCLAIRINE HELPS TO REGENERATING SKIN CELLS AND CONTROLLING EXCESS SEBUM PRODUCTION.

BOTTLES 5.1 FL. OZ

CAVIAR ENRICHED SOAP

THIS MOISTURE RICH BAR FOR THE FACE AND BODY IS FORMULATED WITH CAVIAR EXTRACT TO REJUVENATE, NOURISH AND HYDRATE SKIN. HELPING TO RESTORE SKIN'S YOUTHFUL GLOW WHILE CLEANSING AWAY DIRT AND EXCESS OILS.

SOAP 1 OZ

CAVIAR CLARIFYING GEL

THIS ULTRA LIGHT-WEIGHT HYDRATING GEL REVIVES DEHYDRATED SKIN, REPAIRS DAMAGED SKIN AND LIGHTENS THE COMPLEXION WHILE CONTROLLING SEBUM PRODUCTION WITH VÉGÉCLAIRINE AND CAVIAR EXTRACT.

TUBE 3 FL. OZ

CAVIAR FACE CREAM

THIS HYDRATING FORMULA REVIVES DEHYDRATED SKIN AND LIGHTENS COMPLEXION WHILE CONTROLLING SEBUM PRODUCTION WITH ITS HIGH CLARIFYING AGENT VÉGÉCLAIRINE AND CAVIAR EXTRACT. ITS ANTI-BACTERIAL ELEMENTS SOFTEN THE LOOK OF FINE LINES AND WRINKLES.

JAR 1 FL. OZ



A NEW
LIGHT
ON DARK
SKIN

S O A P

EXFOLIATING
SOAP

A UNIQUE SOAP FOR CLEANSING AND PURIFYING SPECIALLY FORMULATED TO BRIGHTEN AND SOFTEN SUPPLE SKIN WITH APRICOT SEEDS. THIS SOAP GENTLY LIFTS AWAY DAILY DEBRIS, DEAD SKIN CELLS AND IMPURITIES LEAVING SKIN SMOOTH, FRESH AND BRIGHT.

SOAP 7 OZ

TRIPLE ACTION
SOAP

THIS GENTLE CLEANSING BAR FOR THE FACE AND BODY IS FORMULATED WITH THREE ESSENTIAL OILS TO CLEAR AND PREVENT ACNE FOR THE FACE AND BODY WHILE SOOTHING, MOISTURIZING, AND REFRESHING THE SKIN AS IT CLEANSSES AWAY DIRT AND EXCESS OILS.

SOAP 7 OZ

CLEAR ACNYL
SULFER SOAP

SPECIALLY FORMULATED AS A DEEP PORE CLEANSER AND AN INSTANT DETOXIFYING MASK FOR OILY-SKIN. SULFUR HAS POWERFUL ANTI-INFLAMMATORY PROPERTIES TO HELP SOOTHE IRRITATIONS, REDUCE BREAKOUTS, AND REGULATE EXCESS OIL PRODUCTION.

SOAP 7 OZ



CAVIAR
ENRICHED
SOAP

THIS MOISTURE RICH BAR FOR THE FACE AND BODY IS FORMULATED WITH CAVIAR EXTRACT TO REJUVENATE, NOURISH AND HYDRATE SKIN. HELPING TO RESTORE SKIN'S YOUTHFUL GLOW WHILE CLEANSING AWAY DIRT AND EXCESS OILS.

SOAP 7 OZ

INDULGE
YOURSELF

HAIR CARE

HAIR RENEWAL CREAM

THIS CAPILLARY CREAM IS ESPECIALLY FORMULATED FOR DAMAGED HAIR. RESTORING, ENERGISING AND REVITALISING THE HAIR WITH LASTING RESULTS. STIMULATING HAIR GROWTH WHILE REVITALIZING DRY, DEHYDRATED HAIR AND SCALP MAKING HAIR MORE MANAGABLE AND HEALTHIER.

JAR 6X7 ML.



HAIR REPAIRING POMADE

THIS CAPILLARY CREAM IS ESPECIALLY FORMULATED FOR DAMAGED HAIR. RESTORING, ENERGISING AND REVITALISING THE HAIR WITH LASTING RESULTS. STIMULATING HAIR GROWTH WHILE REVITALIZING DRY, DEHYDRATED HAIR, AND REPAIRING CAPILLARY FIBERS MAKING HAIR MORE MANAGABLE AND HEALTHY.

JAR 200 ML.

HAIR TREATMENT OIL

THIS TREATMENT OIL IS SUITABLE FOR DAMAGED HAIR AND SCALP. THE RICH FORMULATION CONTAINS A COCKTAIL OF NATURAL BOTANIC OILS WHICH STRENGTHEN SCALP METABOLISM, REPAIR DAMAGED HAIR AND FORM A PROTECTING BARRIER AGAINST NOXIOUS EXTERNAL AGENTS RESTORING AN EXCEPTIONAL SOFTNESS AND SHINE TO LOCKS.

BOTTLE 100 ML.



HAIR ANTI- BREAKAGE SERUM

THIS CONCENTRATED CAPILLARY SERUM PROVIDES A REAL "COUP D'ÉCLAT" TO DULL HAIR THAT HAS BEEN DAMAGED BY NOXIOUS CLIMATIC AGENTS. THIS SERUM WORKS TO REPAIR THE CAPILLARY FIBERS AND CREATE A PROTECTIVE FILM ON EVERY STRAND OF HAIR, FROM ROOTS TO TIPS RESTORING HAIR'S EXCEPTIONAL SOFTNESS AND SHINE.

BOTTLE 100 ML.



HAIR GROWTH ELIXIR

THIS ELIXIR IS THE REVOLUTIONARY TREATMENT TO HAVE A THICK, FULL AND VOLUMINOUS HEAD OF HAIR. SPECIALLY FORMULATED WITH ESSENTIAL NUTRIENTS, VITAMINS AND OILS NEEDED TO STIMULATE HAIR GROWTH, STRENGTHEN THE HAIR ROOTS AND FIGHT HAIR THINNING AND LOSS. MAKING THE HAIR FULLER, STRONGER AND HEALTHIER.

JAR 6X7 ML.

A NEW LIGHT ON DARK SKIN

B É B É

SWEET ALMOND OIL

THIS MASSAGE OIL IS INFUSED WITH ESSENTIAL VITAMINS AND NUTRIENTS SPECIALLY FORMULATED FOR YOUR BABY'S SKIN. THE LIGHT ALMOND SCENT CALMS WHILE LOCKING IN MOISTURE.

**GREAT AS AN AFTER-BATH TREATMENT.*
BOTTLE 8.45 FL. OZ



SWEET ALMOND OIL SHAMPOO

THIS HYPOALLERGENIC CHILDREN'S FORMULA COMBINES MILD INGREDIENTS FOR A TEAR-FREE GENTLE CLEANSING OF HAIR AND SCALP. INFUSED WITH A SELECTED BLEND OF SWEET ALMOND OIL AND ESSENTIAL VITAMINS.

BOTTLE 16.9 FL. OZ

FOAMING GEL FOR BODY & HAIR

THIS HYPOALLERGENIC FOAMING GEL IS TEAR-FREE TO CLEANS BABY'S HAIR, SCALP AND BODY. INFUSED WITH A SELECTED BLEND OF ESSENTIAL VITAMINS TO CALM AND SOOTH SKIN AND HAIR.

BOTTLE 16.9 FL. OZ



BABY SOAP

AN ULTRA-MILD 100% VEGETABLE SOAP TO CLEANS AND NURTURE YOUR BABY'S DELICATE SKIN. SPECIALLY FORMULATED WITH A BLEND OF SHEA BUTTER, VITAMINS AND ESSENTIAL NUTRIENTS TO PAMPER AND SOFTEN.

SOAP 7 OZ



BÉBÉ CLEANSING MILK

WITH CALENDULA

SILKY SOFT TEXTURED Body Milk is SPECIALLY FORMULATED TO CLEANS BABY'S DELICATE, FRAGILE SKIN. THE LIGHTWEIGHT MILK CLEANSER SOOTHES, CALMS, HYDRATES AND HELPS TO REPAIR BABY'S SKIN WITH A DELICATE BLEND OF ESSENTIAL OILS AND VITAMINS. **MAY BE USED FOR*

ADULT SENSITIVE SKIN

BOTTLE 33.8 FL. OZ



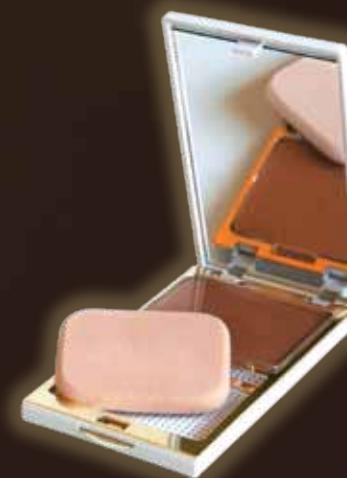
A NEW
LIGHT
ON DARK
SKIN

MAKE UP



COMPACT POWDER

PERFECTION IS EASY TO ACHIEVE, SIMPLY BRUSH OR PRESS ON DRY OVER MOISTURIZER FOR A SHEER, NATURAL FINISH. SPECIALLY FORMULATED TO CREATE A REFINED MATTE LOOK.



WET & DRY COMPACT POWDER

THIS MULTI-TASKING MAKEUP PROVIDES CUSTOMIZED COVERAGE, FROM SHEER TO FULL WITH A MATTE FINISH. A CREAMY, FLATTERING SMOOTH TEXTURE, WITH ALL-DAY COVERAGE AND MATIFYING EFFECTS FOR A PERFECT AND EVEN COMPLEXION.

A NEW
LIGHT
ON DARK
SKIN

MAKE UP

LIQUID FOUNDATION

INSTANTLY, COMPLEXION APPEARS ILLUMINATED, BEAUTIFULLY MATTE, AND VISIBLY FLAWLESS. A CREAMY, FLATTERING SMOOTH TEXTURE, WITH ALL-DAY COVERAGE AND MATIFYING EFFECTS. FOR A LUMINOUS AND EVEN COMPLEXION.

BOTTLE W/ PUMP 1 FL. OZ



TOPI



TOUCAN



WALABI



WATUSSI



LOOSE FACE FIX

LIGHT AND TRANSPARENT, THE LOOSE FACE FIX WORKS WITH FOUNDATION TO BRIGHTEN AND MATIFY MAKE-UP. LEAVING A LIGHT COVER ON THE FACE, WHILE ABSORBING GREASY ELEMENTS AND REDUCING SHINE FOR ALL-DAY CONTINUS WEAR.

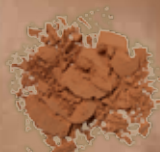
JAR 0.7 FL. OZ



NYALA



OKAPI



SIMBA



ORYX

A NEW
LIGHT
ON DARK
SKIN

MAKE UP

LIPSTICK

THIS LUXURIOUS LIPSTICK IS
A UNIQUE DARK COLOR FOR
STANDOUT BEAUTIFUL LIPS

**AS SEEN ON MODEL*

TUBE 0.12 OZ



N°2

MYSTERIOUS. EXOTIC. SIZZLING.
N°2 IS A MYSTERIOUS AND
FLAMBOYANT FRAGRANCE WITH
EXOTIC NOTES OF WOOD, WHITE
LILY AND PATCHOULI.

BOTTLE 1.7 FL. OZ

LIP LINER PENCIL

THIS CREAMY PENCIL DEFINES AND CONTOURS
LIPS. ALL NEW FORMULA APPLIES SMOOTHLY AND
EVENLY, IT IS LONG-LASTING AND NON-DRYING.

PENCIL 0.05 OZ



A NEW
LIGHT
ON DARK
SKIN

MAKE UP



EYELINER PENCIL

CREATE A SENSUAL, INTENSE EYE LOOK INSTANTLY. COLOR IS LONG-WEARING AND APPLIES SMOOTHLY.

PENCIL 0.05 OZ



LIQUID EYELINER

EMPHASIZE YOUR EYES WITH THIS EASY-TO-HANDLE, LIQUID PEN. IDEAL FOR AN ACCURATE AND FINE LINE TO THE EYELASH EDGE TO EMPHASIZE EYES.

TUBE 0.27 FL. OZ

EYEBROW PENCIL

THE PROFESSIONAL FORMULA GLIDES ON, BLENDS EASILY TO FILL IN YOUR BROW LINE OR CREATE DRAMATIC DEFINITION.

PENCIL 0.05 OZ



MASCARA

FOR LAVISHLY LONG, PERFECTLY DEFINED LASHES. THE WAND IS DESIGNED WITH EXCEPTIONAL COATING AND CURVING CAPABILITIES.

TUBE 0.27 FL. OZ



05 BODY BEAUTIFYING MILK

For best results, massage onto slightly damp skin after bathing or showering. May be used daily or as often as necessary.

SKIN REPAIRING AND CLARIFYING SERUM

Apply to cleansed skin day and night.

06 DAY CREAM

Apply twice a day after cleansing and before sunscreen. For Dry, Oily, Combination, Acne and Aging skins.

NIGHT TREATMENT CREAM

Apply day after cleansing. For Dry, Oily, Combination, Acne and Aging skins.

CLEAR-ACNYL CREAM

Apply to cleansed skin. Cover the affected area with a thin layer twice daily. Excessive drying of the skin may occur, start with one application daily gradually increase to two if needed. If dryness or peeling occurs, reduce application to once a day or every other day.

09 PURIFYING CLEANSING TONIC

Apply to a cotton ball and After cleansing, apply Tonic to a cotton ball and apply to face, avoiding the immediate eye area. Follow with Moisturizer. Ideal for all skin types, including sensitive skin.

MAKE UP REMOVER

Apply to a cotton ball and Gently cleanse makeup from the eyelid, eyelash, and lip area with a saturated cotton ball. Follow-up with cleanser. Ideal for all skin types, including sensitive skin.

BODY SILK LIFTING ACTION

Massage onto slightly damp skin after cleansing. May be used as often as necessary.

10 CLARIFYING CREAM

Apply twice a day after cleansing and before sunscreen. Suitable for all skin types.

CLARIFYING SCRUBBING CREAM

Dab a small amount onto clean, damp skin and gently massage in circular motions. Avoid the eye area. Remove with lukewarm water. Follow with Clarifying Serum. Suitable for all skin types.

PEEL-OFF MASK 10

Apply an even layer to clean, dry skin. Avoid eyebrows, hairline and lips and eye area. Leave on 10-15 minutes or until completely dry. Gently peel off mask from outer edges. Rinse off any residue with warm water. Follow with moisturizer. Use once or twice a week. For Oily, Combination, and Acne prone skins.

EYE CONTOUR GEL 13

Use twice a day after cleansing. Apply gently to brow bone and under eye area morning and/or evening.

ORALIGHT CLEAR COMPLEXION CAPS

Take two capsules daily with meals. Drink the recommended 8 cups of water daily. Not recommended for women who are pregnant or nursing.

ANTI-U.V. CREAM

Apply twice a day after cleansing. Suitable for all skin types.

ULTRA MOISTURIZING CREAM 14

Apply twice a day after cleansing and before sunscreen. For Dry, Oily, Combination, Acne and Aging skins.

CLEANSING LOTION

Apply to a cotton ball and Gently cleanse skin twice daily. Ideal for all skin types, including sensitive skin.

CAVIAR FACE CREAM 17

Use twice a day after cleansing and applying sunscreen.

CAVIAR CLARIFYING GEL

Use twice a day after cleansing and applying sunscreen.

GLYCERIN WITH CAVIAR

Use once a day after cleansing and applying sunscreen.

CAVIAR ENRICHED SOAP

Use daily on face and body. Rinse. Ideal for all skin types, including Dry skin.

SOAP 18

Use daily on face and body. Rinse. Ideal for all skin types, including Dry skin.

21 HAIR REPAIRING POMADE

Apply on damp hair, lock by lock, massage and dress.

HAIR RENEWAL CREAM

Apply on damp hair, lock by lock, massage and dress.

HAIR TREATMENT OIL

Apply on damp hair and let act during 20 minutes, then clean and rinse.

HAIR ANTI-BREAKAGE SERUM

Apply on damp hair and let act during 20 minutes, then clean and rinse.

HAIR GROWTH ELIXER

Use about 2 ampoules per week during 4 weeks. Apply 3 to 5 drops on thoroughly cleansed scalp with light massage until complete absorption.

22 SWEET ALMOND OIL

Gently massage all over the body. Can be repeated when necessary.

SWEET ALMOND OIL SHAMPOO

Apply to palm of hand and then gently apply to baby's hair and scalp, avoiding the eye area. Gently rinse with warm water. If contact with eyes occurs, rinse immediately with water.

FOAMING GEL FOR BODY & HAIR

Apply to palm of hand and then gently apply to baby's hair, scalp and body, avoiding the eye area. Gently rinse with warm water. If contact with eyes occurs, rinse immediately with water.

BABY SOAP

Use daily on face and body. Rinse. Ideal for all skin types, including Dry skin.

BABY LOTION

Use after cleansing. For best results, massage onto slightly damp skin after bathing or showering. Follow up lotion. May be used daily or as often as necessary.

COMPACT POWDER

Use a soft brush or puff to spread all over the face and neck upon the Makari foundation to obtain a mat and stay on make-up.

WET & DRY COMPACT POWDER

With the sponge dry, you will obtain a velvet effect. You can choose your make-up according to your mood.

LIQUID FOUNDATION

Gently spread on the face and neck. Then smooth carefully with fingers to avoid marks near the bottom neck and hair line.

LOOSE FACE FIX

Apply with a powder puff. Brush off with a big brush to achieve a natural look.

LIPSTICK

Apply a thin, even coat of even color on clean, bare lips and wait until completely dry. Use as often as needed.

N°2 FRAGRANCE

Lightly spritz N°2 on the inside of your wrists and behind your ears or near the neck gland. spray fragrance from 6 to 7 inches away from skin.

LIP LINER PENCIL

Draw a thin line along the edge of your lips starting at the center of the upper lip and work outward.

PENCIL EYELINER

Apply eyeliner starting from the inner corner of your eye to the outside tip. Use pencil eyeliner for soft definition.

LIQUID EYELINER

Apply eyeliner starting from the inner corner of your eye to the outside tip. Use liquid eyeliner for precision and drama.

EYEBROW PENCIL

Starting at the thickest part of your eyebrows, make short, wispy strokes with the eyebrow pencil in the bare spots of your eyebrows. Work your way to the opposite end of your eyebrow.

MASCARA

Apply mascara by closing the eye and then opening it while brushing downwards, or by leaving the eye closed as you apply.

25

26

29

30

THANK YOU
TO OUR
CUSTOMERS
ALL OVER
THE WORLD

INSTRUCTIONS

MAKARI

DE SUISSE

FLAGSHIP RETAIL FRANCE

18, BD DE STRASBOURG
75010 PARIS-FRANCE
TEL : 0142 380 522
FAX : 0142 380 932
EMAIL : VICTORIAALBI@WANADOO.FR
WWW.MAKARI.FR

WHOLESALE

1178 BROADWAY 5TH FLOOR
NEW YORK, NY 10001
TOLL FREE : 800-828-2515
EMAIL : MAKARI@MAKARI.COM
WWW.MAKARI.COM

OMAN AND UAE

RASHAD AL ABDESSALAM
TEL: 00968 99337824
FAX: 00968 24698837
EMAIL: RAZIZ@MAKARI.COM

VICTORIA ALBI Cosmetics Private Ltd INDIA WHOLESALE

E-202, SECTOR 63, NOIDA
PHONE: +91 120 432 5348
INFO@MAKARI.IN
WWW.MAKARI.IN

FLAGSHIP RETAIL

52 W. 125TH STREET
NEW YORK, NY 10027
TEL : 212-348-7464
EMAIL : MAKARI@MAKARI.COM
WWW.MAKARI.COM

RETAIL

203-205, AV. KERSBEEK
1190 BRUXELLES-BELGIQUE
TEL : 02 245 07 70
FAX : 02 245 15 36
EMAIL : INFO@COSMEBEL.COM
WWW.MAKARI.FR

RETAIL

19, GAL. DE LA PORTE DE NAMUR
1050 BRUXELLES-BELGIQUE
TEL : 02 502 09 07
FAX : 02 245 15 36
EMAIL : INFO@COSMEBEL.COM
WWW.MAKARI.FR

E-Commerce

TOLL FREE 1-877-942-3288
WWW.MAKARI.COM

QUEBEC EXCLUSIVE DISTRIBUTOR

ELIKYA INC
6011 RUE PASCAL
MONTREAL QC H1G 1T1
TEL: 1-514-573-2986
EMAIL: ARMAND@MAKARI.COM